

## Product datasheet for **TA309930**

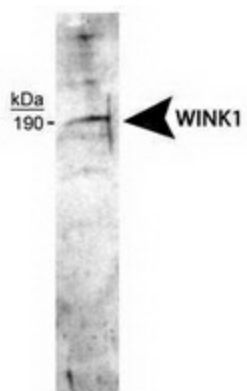
### WNK1 Rabbit Polyclonal Antibody

#### Product data:

Product Type:	Primary Antibodies
Applications:	WB
Recommended Dilution:	WB
Reactivity:	Human, Mouse, Rat
Host:	Rabbit
Clonality:	Polyclonal
Immunogen:	A synthetic peptide sequence within the C-terminal region of human WNK1 (within the last 350 amino acids).
Formulation:	PBS and 0.05% Sodium Azide
Concentration:	lot specific
Purification:	Peptide affinity purified
Conjugation:	Unconjugated
Storage:	Store at -20°C as received.
Stability:	Stable for 12 months from date of receipt.
Gene Name:	WNK lysine deficient protein kinase 1
Database Link:	<a href="#">NP_055638</a> <a href="#">Entrez Gene 116477 RatEntrez Gene 232341 MouseEntrez Gene 65125 Human Q9H4A3</a>
Synonyms:	HSAN2; HSN2; KDP; p65; PPP1R167; PRKWNK1; PSK
Protein Families:	Druggable Genome, Protein Kinase



[View online »](#)

**Product images:**

Western Blot: WNK1 antibody - Detection of the short form of WNK1 in F-11 cell lysate.