

Product datasheet for **TA309929**

NSD3 (WHSC1L1) Rabbit Polyclonal Antibody

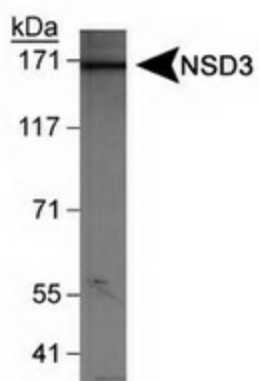
Product data:

Product Type:	Primary Antibodies
Applications:	WB
Recommended Dilution:	WB
Reactivity:	Bovine, Human, Mouse
Host:	Rabbit
Clonality:	Polyclonal
Immunogen:	Synthetic peptide made to a internal portion of the human protein (within residues 300-400). [Swiss-Prot# Q9BZ95]
Formulation:	Tris-citrate/phosphate, pH 7-8 and 0.1% Sodium Azide
Concentration:	lot specific
Purification:	Peptide affinity purified
Conjugation:	Unconjugated
Storage:	Store at -20°C as received.
Stability:	Stable for 12 months from date of receipt.
Gene Name:	Wolf-Hirschhorn syndrome candidate 1-like 1
Database Link:	NP_060248 Entrez Gene 234135 Mouse Entrez Gene 54904 Human Q9BZ95
Synonyms:	NSD3; pp14328
Protein Families:	Druggable Genome, Transcription Factors
Protein Pathways:	Lysine degradation



[View online »](#)

Product images:



Detection of NSD3 (isoform 1) in HeLa nuclear extracts using anti-NSD3.