

Product datasheet for **TA309928**

VLDL Receptor (VLDLR) Mouse Monoclonal Antibody [Clone ID: 6A6]

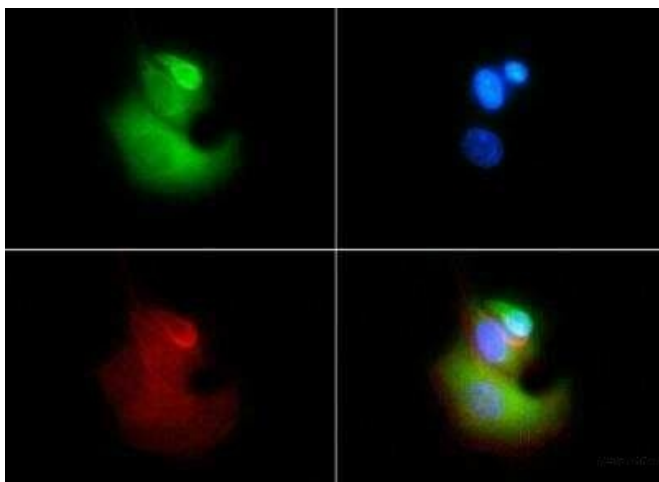
Product data:

Product Type:	Primary Antibodies
Clone Name:	6A6
Applications:	ICC/IF, IHC, WB
Recommended Dilution:	Western Blot: 1:1000, Immunohistochemistry-Paraffin: 1:200, Immunohistochemistry: 1:200, Immunocytochemistry/ Immunofluorescence: 1:50
Reactivity:	Bovine, Human, Mouse, Rat
Host:	Mouse
Isotype:	IgG1
Clonality:	Monoclonal
Immunogen:	Synthetic peptide corresponding to the C-terminus of human VLDL Receptor [Swiss-Prot# P98155]
Formulation:	Tris-glycine, 150mM NaCl pH 7.5 and 0.05% Sodium Azide
Concentration:	lot specific
Purification:	Protein G purified
Conjugation:	Unconjugated
Storage:	Store at -20°C as received.
Stability:	Stable for 12 months from date of receipt.
Gene Name:	very low density lipoprotein receptor
Database Link:	NP_003374 Entrez Gene 22359 Mouse Entrez Gene 25696 Rat Entrez Gene 7436 Human P98155
Synonyms:	CAMRQ1; CARMQ1; CHRMQ1; VLDLRCH
Protein Families:	Druggable Genome, Transmembrane

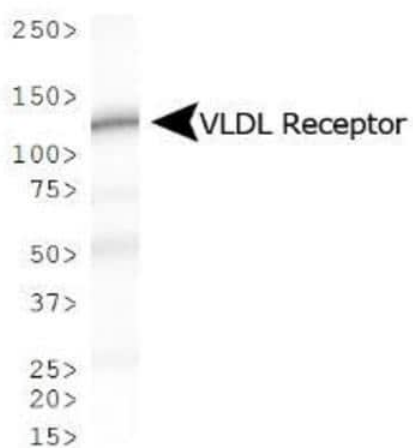


[View online »](#)

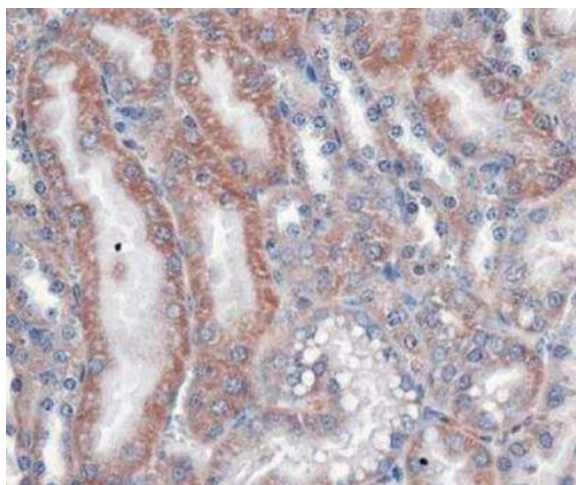
Product images:



Immunocytochemistry/Immunofluorescence: VLDLR Antibody (6A6) TA309928 - VLDL R Antibody (6A6) TA309928 - VLDL Receptor antibody was tested in HeLa cells with FITC (green). Nuclei and actin were counterstained with DAPI (blue) and Phalloidin (red).



Western Blot: VLDL R Antibody (6A6) TA309928 - Analysis of VLDL Receptor expression in mouse kidney.



Immunohistochemistry: VLDL R Antibody (6A6)
TA309928 - Analysis of VLDL Receptor in mouse
kidney.