

## Product datasheet for **TA309926**

### USP22 Rabbit Polyclonal Antibody

#### Product data:

Product Type:	Primary Antibodies
Applications:	ChIP, IHC, Simple Western, WB
Recommended Dilution:	Immunohistochemistry, Western Blot: 2 ug/ml, Simple Western: 1:25, Chromatin Immunoprecipitation, Immunohistochemistry-Paraffin, Proximity Ligation Assay, Gel Super Shift Assays
Reactivity:	Human, Mouse
Host:	Rabbit
Clonality:	Polyclonal
Immunogen:	A genomic peptide made to an internal region of the human USP22 protein (within residues 100-205). [Swiss-Prot Q9H3R0]
Formulation:	PBS, 30% glycerol. and 0.05% Sodium Azide
Concentration:	lot specific
Purification:	Affinity purified
Conjugation:	Unconjugated
Storage:	Store at -20°C as received.
Stability:	Stable for 12 months from date of receipt.
Gene Name:	ubiquitin specific peptidase 22
Database Link:	<a href="#">NP_056091</a> <a href="#">Entrez Gene 216825 Mouse</a> <a href="#">Entrez Gene 23326 Human</a> <a href="#">Q9UPT9</a>
Synonyms:	USP3L
Protein Families:	Protease

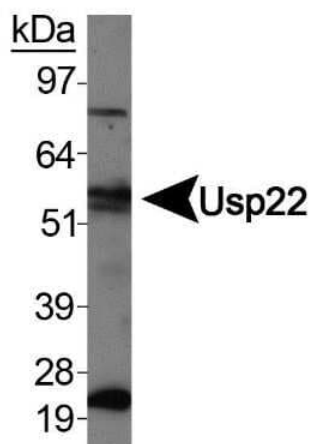


[View online »](#)

## Product images:



Simple Western: USP22 Antibody TA309926 - Simple Western lane view shows a specific band for USP22 in 1.0 mg/ml of HeLa lysate. This experiment was performed under reducing conditions using the 12-230 kDa separation system.



Western Blot: USP22 Antibody TA309926 - Western blot analysis of Usp22 in HeLa whole cell extracts.