

Product datasheet for **TA309923**

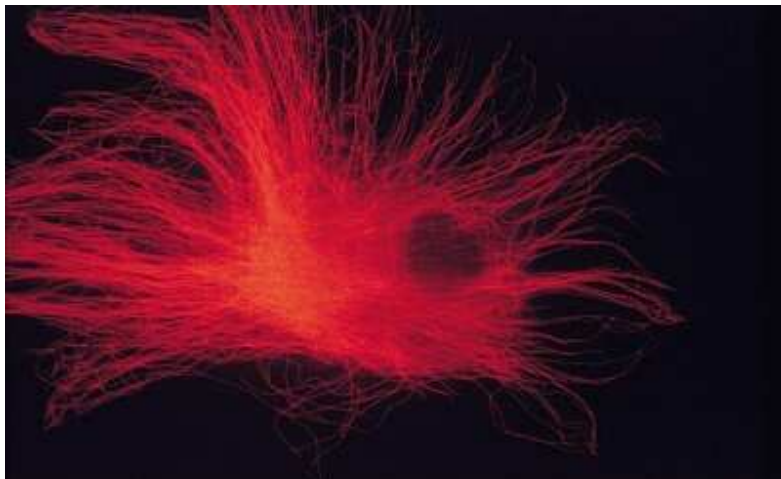
alpha Tubulin (TUBA1A) Mouse Monoclonal Antibody [Clone ID: DM1A]

Product data:

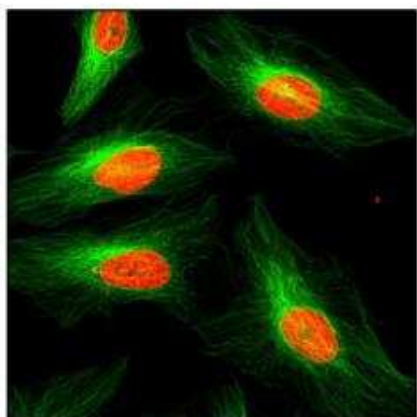
| | |
|-----------------------|--|
| Product Type: | Primary Antibodies |
| Clone Name: | DM1A |
| Applications: | CyTOF-ready, FC, ICC/IF, IHC, IP, Simple Western, WB |
| Recommended Dilution: | Immunomicroscopy, Flow (Intracellular), Immunoprecipitation: 1:50-1:100, Western Blot: 1:5000, Immunohistochemistry-Paraffin: 1:100-1:500, Immunohistochemistry-Frozen: 1:100-1:500, Simple Western: 1:50, Flow Cytometry: 1 ug per million cells, Immunohistochemistry: 1:100-1:500, Immunocytochemistry/ Immunofluorescence: 1:50000-1:100000, CyTOF-ready |
| Reactivity: | Bovine, Chicken, Guinea Pig, Human, Mouse, Porcine, Rat, Xenopus |
| Host: | Mouse |
| Isotype: | IgG1, kappa |
| Clonality: | Monoclonal |
| Immunogen: | Native chicken brain microtubules. |
| Formulation: | Tris-glycine, 150mM NaCl pH 7.5 and 0.05% Sodium Azide |
| Concentration: | lot specific |
| Purification: | Protein G purified |
| Conjugation: | Unconjugated |
| Storage: | Store at -20°C as received. |
| Stability: | Stable for 12 months from date of receipt. |
| Gene Name: | tubulin alpha 1a |
| Database Link: | NP_006000 Entrez Gene 22142 Mouse Entrez Gene 64158 Rat Entrez Gene 7846 Human Q71U36 |
| Synonyms: | B-ALPHA-1; LIS3; TUBA3 |
| Protein Families: | Druggable Genome |
| Protein Pathways: | Gap junction, Pathogenic Escherichia coli infection |



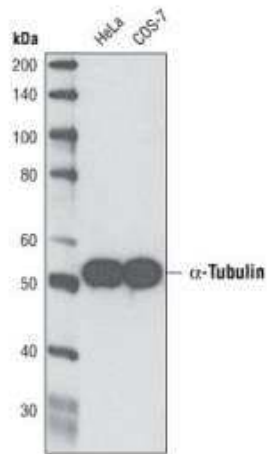
[View online »](#)

Product images:

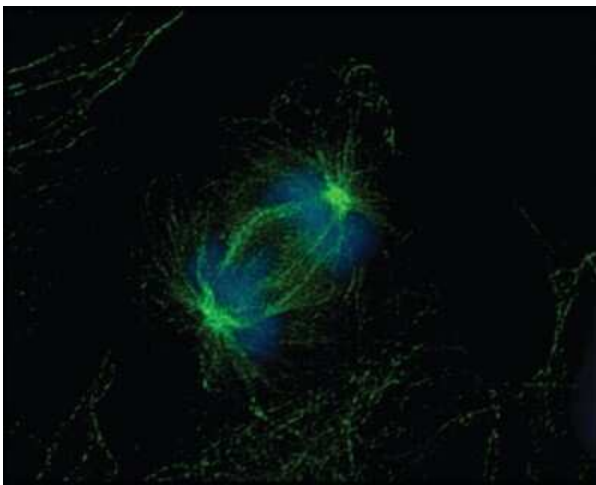
Immunocytochemistry/Immunofluorescence:
alpha Tubulin Antibody (DM1A) TA309923 -
Staining of skin fibroblasts.



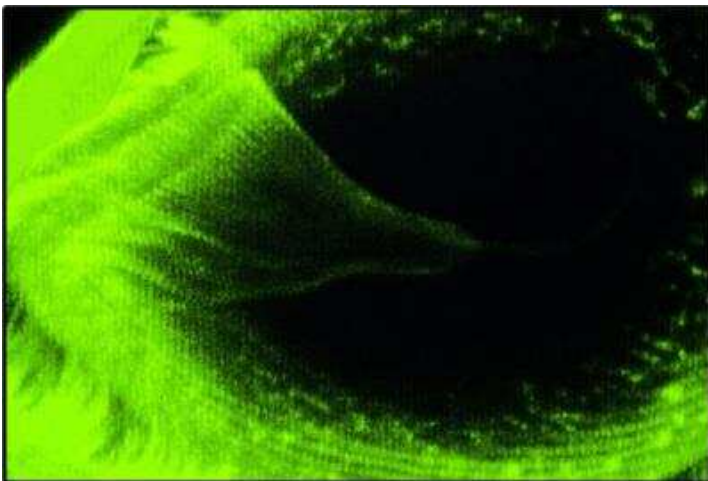
Immunomicroscopy: alpha Tubulin Antibody
(DM1A) TA309923 - Analysis of HeLa cells, green
staining is alpha tubulin whereas red is DNA
stained with propidium iodide.



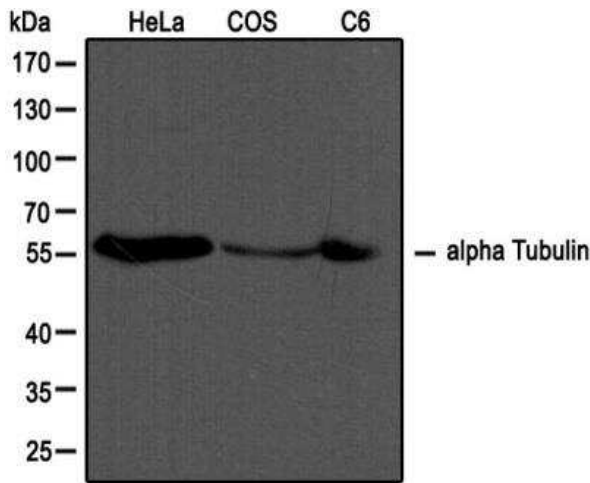
Western Blot: alpha Tubulin Antibody (DM1A) TA309923 - Analysis of HeLa and COS-7 lysates. Alpha tubulin molecular weight: 50 kDa.



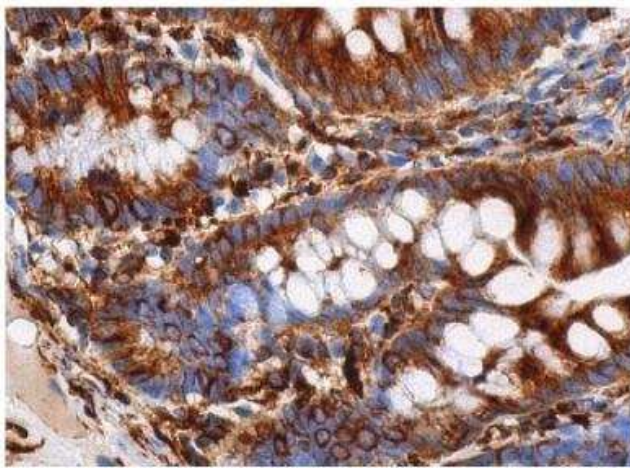
Immunocytochemistry/Immunofluorescence: alpha Tubulin Antibody (DM1A) TA309923 - Analysis of embryonic fibroblasts in the anaphase portion of mitosis.



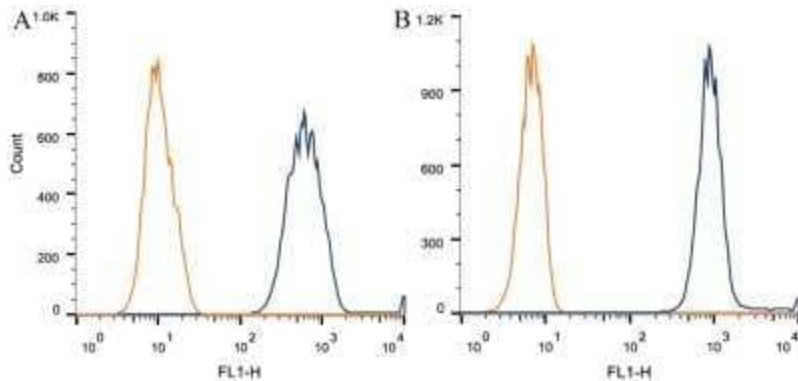
Immunomicroscopy: alpha Tubulin Antibody (DM1A) TA309923 - Staining of the marine parasite *Cryptocaryon irritans* mouth. Large bundles of microtubules form a cytophyrigeal basket.



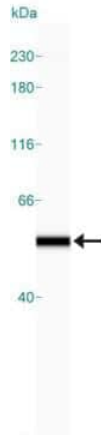
Western Blot: alpha Tubulin Antibody (DM1A) TA309923 - Western blot analysis of extracts from HeLa, COS and C6 cells using alpha Tubulin antibody (TA309923, 1:1000, Alpha tubulin molecular weight: 50 kDa)



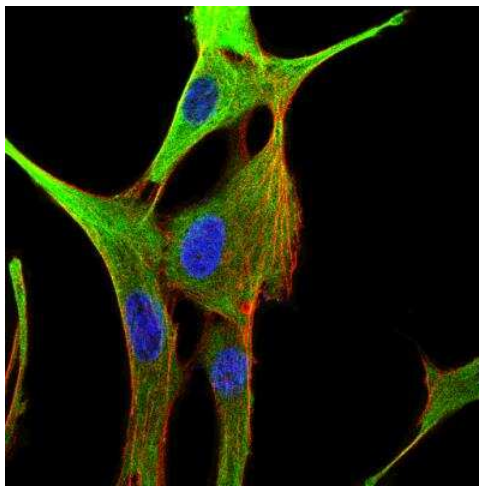
Immunohistochemistry: alpha Tubulin Antibody (DM1A) TA309923 - Analysis of small intestine tissue fixed with formalin and paraffin embedded showing cytoplasmic and cytoskeletal staining of glandular cells.



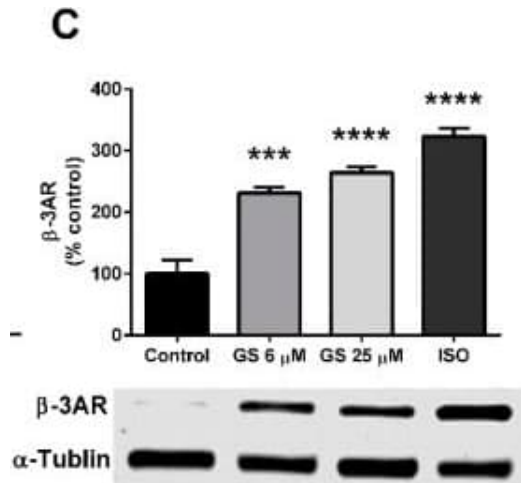
Flow Cytometry: alpha Tubulin Antibody (DM1A) TA309923 - Intracellular flow cytometric staining of 1×10^6 CHO (A) and HEK-293 (B) cells using alpha Tubulin antibody (dark blue). Isotype control shown in orange. An antibody concentration of 1 ug/ 1×10^6 cells was used.



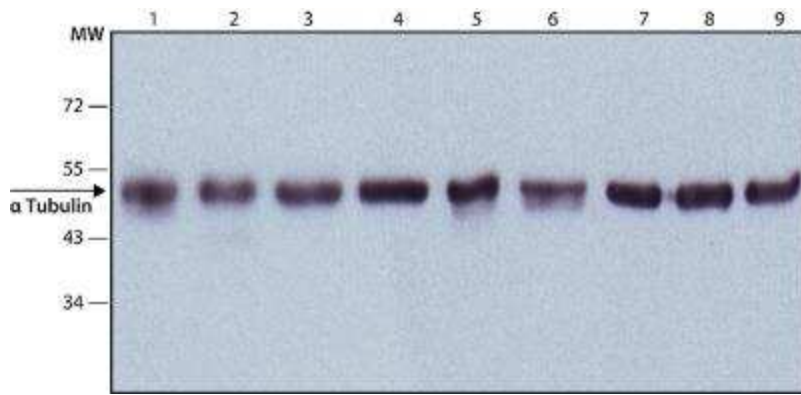
Simple Western: alpha Tubulin Antibody (DM1A) TA309923 - Simple Western lane view shows a specific band for alpha Tubulin in 1.0 mg/ml of HeLa lysate. This experiment was performed under reducing conditions using the 12-230 kDa separation system. Alpha tubulin molecular weight: 50 kDa.



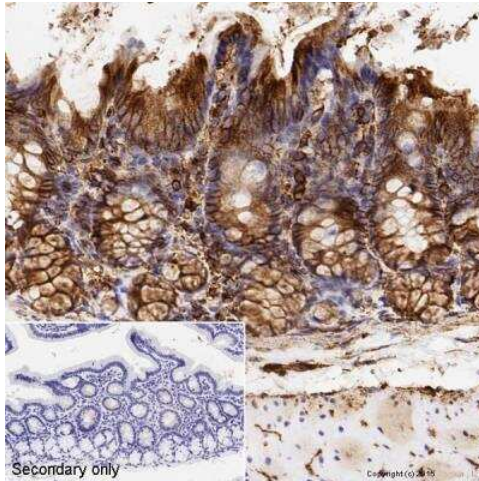
Immunocytochemistry/Immunofluorescence: alpha Tubulin Antibody (DM1A) TA309923 - IF Confocal analysis of C6 cells using alpha Tubulin antibody (TA309923, 1:50). An Alexa Fluor 488-conjugated Goat to mouse IgG was used as secondary antibody (green, A). Actin filaments were labeled with Alexa Fluor 568 phalloidin (red, B). DAPI was used to stain the cell nuclei (blue, C).



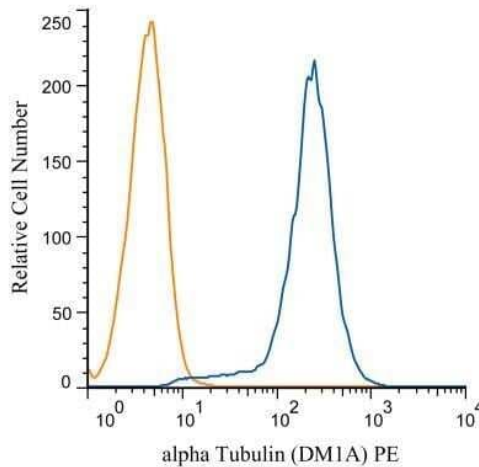
GS treatment increases markers of beiging in 3T3-L1 adipocytes. GS treatment upregulates markers of beiging, including UCP1 (A), TBX1 (B), and β-3AR (C) proteins. Data presented as mean ± SEM from n = 4 replicates per group. * p < 0.05, *** p < 0.001 vs. control. Abbreviations: isoproterenol (ISO), uncoupling protein 1 (UCP1), glyceraldehyde 3-phosphate dehydrogenase (GAPDH), T-box protein 1 (TBX1), β-3 adrenergic receptor (β-3AR).



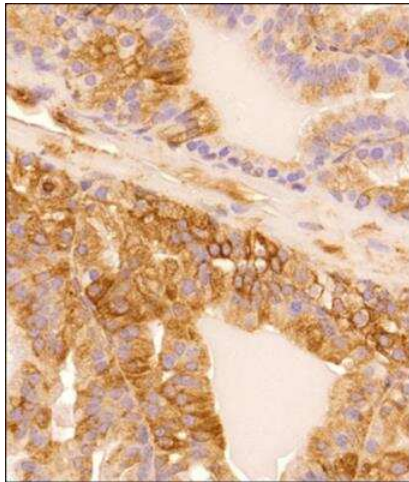
Western Blot: alpha Tubulin Antibody (DM1A) TA309923 - Analysis of alpha tubulin in 9 cell lysates. Lane 1. HeLa; Lane 2. JURKAT; Lane 3. COS7; Lane 4. NIH-3T3; Lane 5. PC-12; Lane 6. RAT2; Lane 7. CHO; Lane 8. MDBK; Lane 9. MDCK



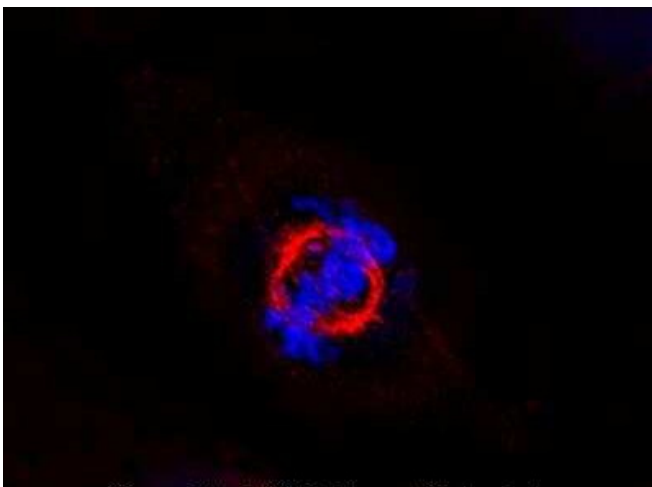
Immunohistochemistry: alpha Tubulin Antibody (DM1A) TA309923 - Analysis of formalin fixed colon sections. Heat mediated antigen retrieval was performed using sodium citrate buffer for 20 min before incubating with primary antibody at a 0.5ug/ml dilution for 15 min at RT.



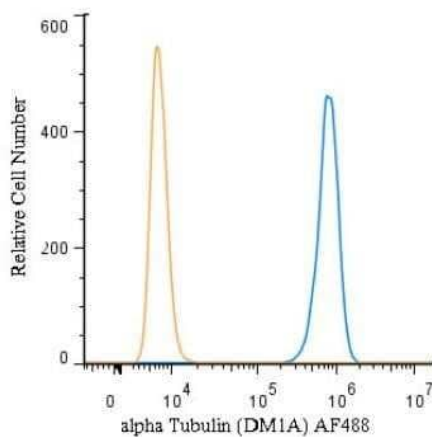
Flow Cytometry: alpha Tubulin Antibody (DM1A) TA309923 - Analysis of PE conjugate of TA309923. An intracellular stain was performed on SH-SY5Y cells with Alpha Tubulin antibody (DM1A) TA309923PE (blue) and a matched isotype control NBP2-27287PE (orange). Cells were fixed with 4% PFA and then permeabilized with



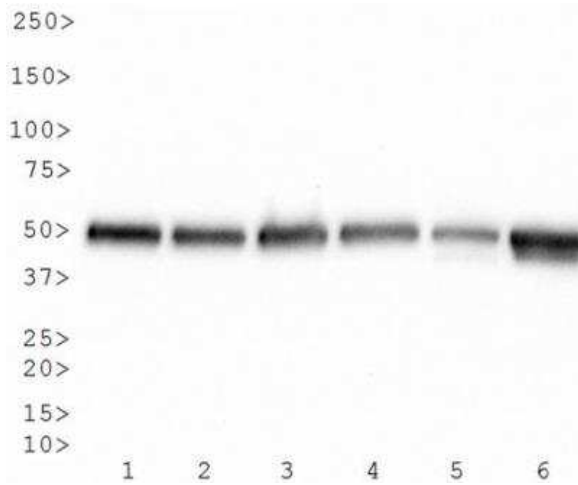
Immunohistochemistry-Paraffin: alpha Tubulin Antibody (DM1A) TA309923 - IHC analysis of a formalin fixed and paraffin embedded tissue section of mouse prostate using alpha Tubulin Antibody (DM1A) at 1:200 dilution. The signal was developed using HRP labelled secondary and DAB reagent which followed counterstaining with hematoxylin. The antibody generated a specific cytoplasmic/cytoskeletal staining in the prostate epithelial cells.



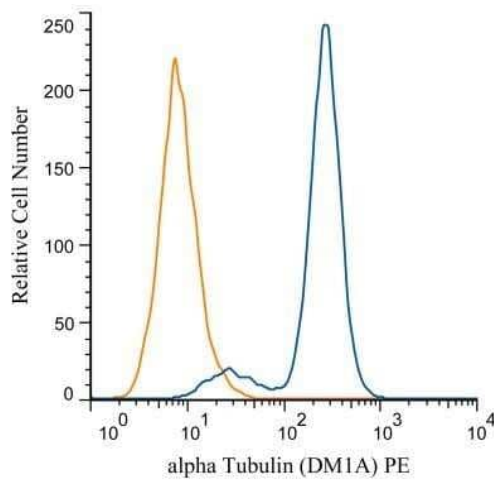
Immunocytochemistry/Immunofluorescence: alpha Tubulin Antibody (DM1A) TA309923 - HeLa cells were fixed in 4% paraformaldehyde for 10 minutes and permeabilized in 0.05% Triton X-100 in PBS for 5 minutes. The cells were incubated with alpha Tubulin Antibody [DM1A] conjugated to Janelia Fluor 549 (TA309923)F549) at 5 ug/ml for 1 hour at room temperature. Nuclei were counterstained with DAPI (Blue). Cells were imaged using a 100X objective and digitally deconvolved.



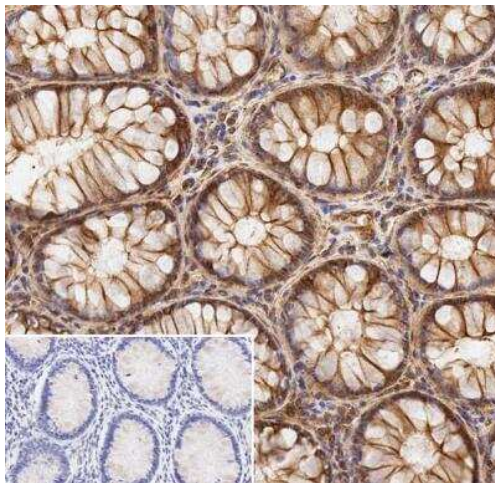
Flow (Intracellular): alpha Tubulin Antibody (DM1A) TA309923 - An intracellular stain was performed on HeLa cells with alpha Tubulin Antibody (DM1A) TA309923AF488 (blue) and a matched isotype control (orange). Cells were fixed with 4% PFA and then permeabilized with 0.1% saponin. Cells were incubated in an antibody dilution of 5 ug/mL for 30 minutes at room temperature. Both antibodies were conjugated to Alexa Fluor 488. Image from the Alexa Fluor 488 version of this antibody.



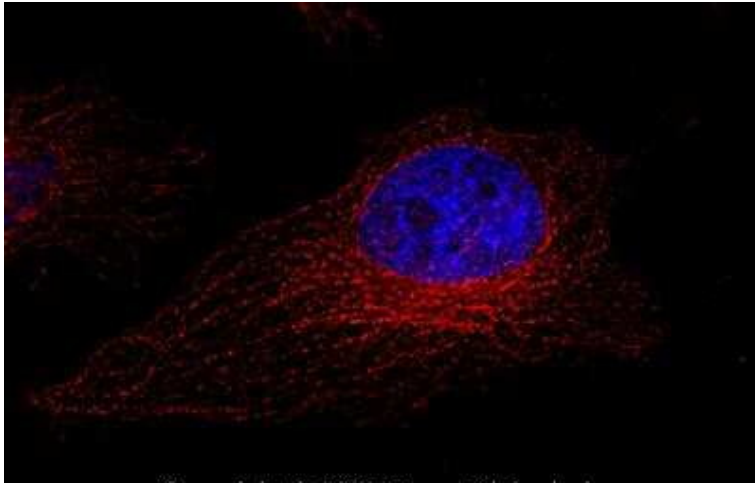
Western Blot: alpha Tubulin Antibody (DM1A) TA309923 - Analysis of alpha tubulin (molecular weight of 50 kDa) in 9 cell lysates. Lane 1. HeLa; Lane 2. JURKAT; Lane 3. COS7; Lane 4. NIH-3T3; Lane 5. PC-12; Lane 6. RAT2; Lane 7. CHO; Lane 8. MDBK; Lane 9. MDCK



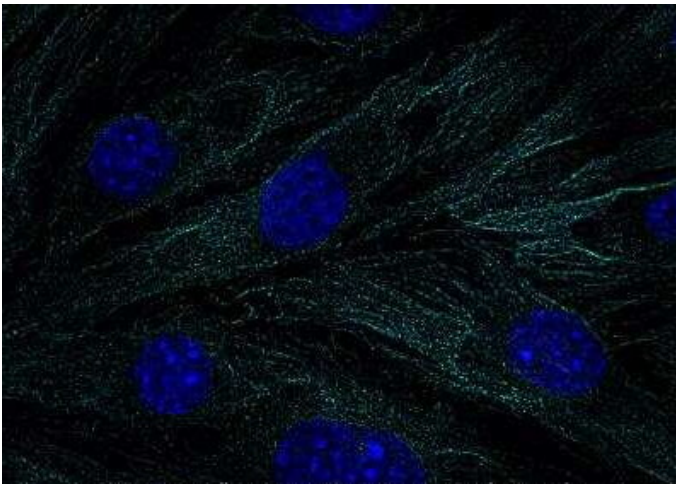
Flow Cytometry: alpha Tubulin Antibody (DM1A) TA309923 - Analysis of PE conjugate of TA309923. An intracellular stain was performed on RAW 246.7 cells with Alpha Tubulin antibody (DM1A) TA309923PE (blue) and a matched isotype control NBP2-27287PE (orange). Cells were fixed with 4% PFA and then permeabilized with



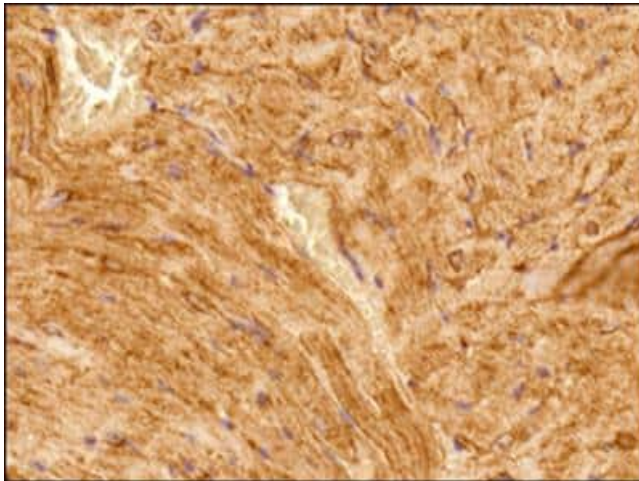
Immunohistochemistry: alpha Tubulin Antibody (DM1A) TA309923 - Analysis of colon tissue. Sections were formalin fixed and embedded with paraffin. Sodium citrate heat mediated antigen retrieval for 20 min. Incubated with primary antibody for 15 min at a 5 ug/ml concentration. Corner image is staining with secondary only.



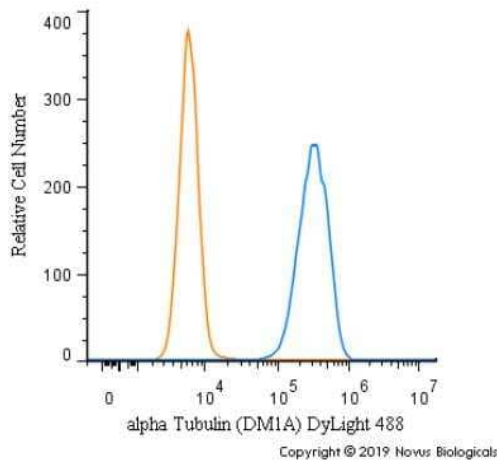
Immunocytochemistry/Immunofluorescence: alpha Tubulin Antibody (DM1A) TA309923 - HeLa cells were fixed in 4% paraformaldehyde for 10 minutes and permeabilized in 0.05% Triton X-100 in PBS for 5 minutes. The cells were incubated with alpha Tubulin Antibody [DM1A] conjugated to Janelia Fluor 549 (TA309923)F549) at 5 ug/ml for 1 hour at room temperature. Nuclei were counterstained with DAPI (Blue). Cells were imaged using a 100X objective and digitally deconvolved.



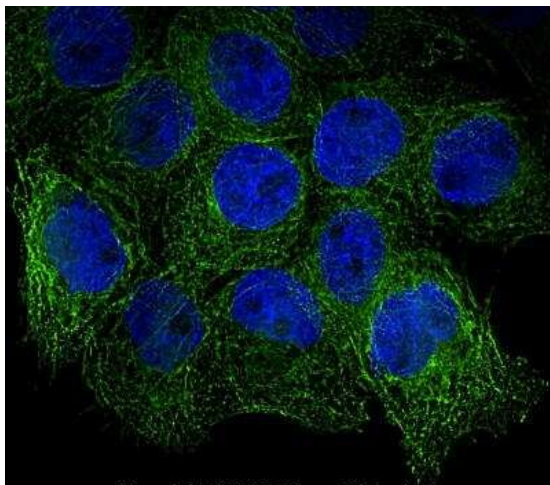
Immunocytochemistry/Immunofluorescence: alpha Tubulin Antibody (DM1A) - BSA Free TA309923 - Mouse MS1 cells were fixed in 4% paraformaldehyde for 10 minutes and permeabilized in 0.05% Triton X-100 in PBS for 5 minutes. The cells were incubated with alpha Tubulin Antibody [DM1A] conjugated to Alexa Fluor 647 (TA309923)AF647) at 2 ug/ml for 1 hour at room temperature. Nuclei were counterstained with DAPI (Blue). Cells were imaged using a 100X objective and digitally deconvolved.



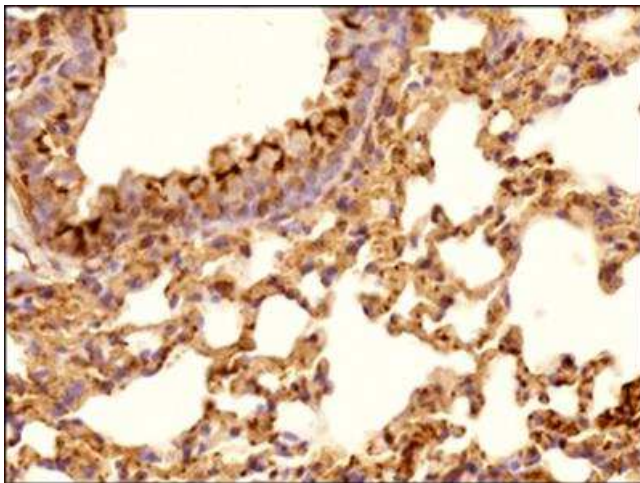
Immunohistochemistry-Paraffin: alpha Tubulin Antibody (DM1A) TA309923 - IHC analysis of a formalin fixed paraffin embedded tissue section of mouse heart using alpha Tubulin Antibody (DM1A) at 1:100 dilution with HRP-DAB detection and hematoxylin counterstaining. The antibody generated a strong and specific cytoplasmic signal in the muscle cells.



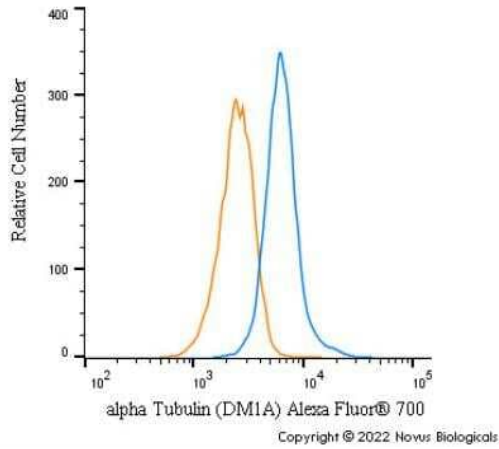
Flow Cytometry: alpha Tubulin Antibody (DM1A) TA309923 - An intracellular stain was performed on HeLa cells with alpha Tubulin (DM1A) Antibody [TA309923G] (blue) and a matched isotype control (orange). Cells were fixed with 4% PFA and then permeabilized with 0.1% saponin. Cells were incubated in an antibody dilution of 5 ug/mL for 30 minutes at room temperature. Both antibodies were conjugated to DyLight 488.



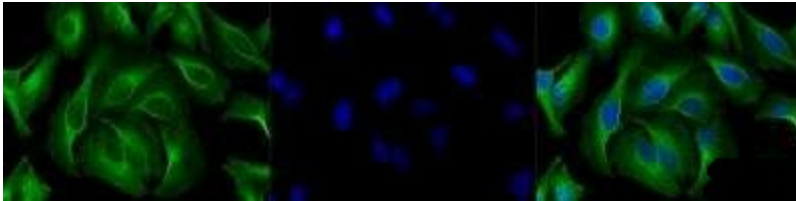
Immunocytochemistry/Immunofluorescence: alpha Tubulin Antibody (DM1A) TA309923 - A431 cells were fixed in 4% paraformaldehyde for 10 minutes and permeabilized in 0.05% Triton X-100 in PBS for 5 minutes. The cells were incubated with anti-alpha Tubulin Antibody [DM1A] conjugated to Alexa Fluor 488 (TA309923AF488) at 5 ug/ml for 1 hour at room temperature. Nuclei were counterstained with DAPI (Blue). Cells were imaged using a 100X objective and digitally deconvolved.



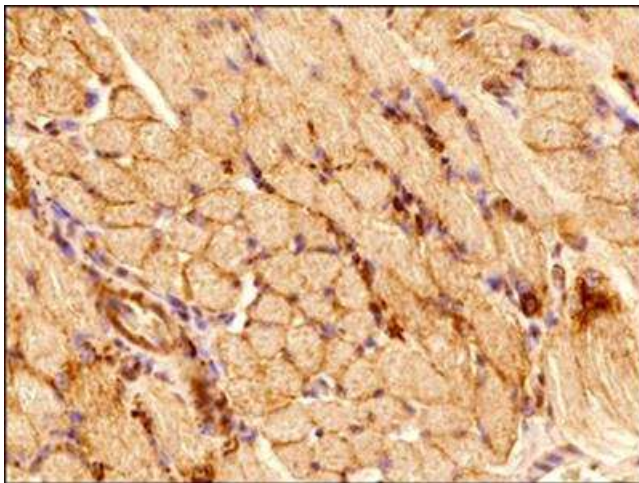
Immunohistochemistry-Paraffin: alpha Tubulin Antibody (DM1A) TA309923 - IHC analysis of a formalin fixed paraffin embedded tissue section of mouse lung using alpha Tubulin Antibody (DM1A) at 1:100 dilution with HRP-DAB detection and hematoxylin counterstaining. The antibody generated chunks of cytoplasmic signal in the alveolar and bronchiolar epithelial cells.



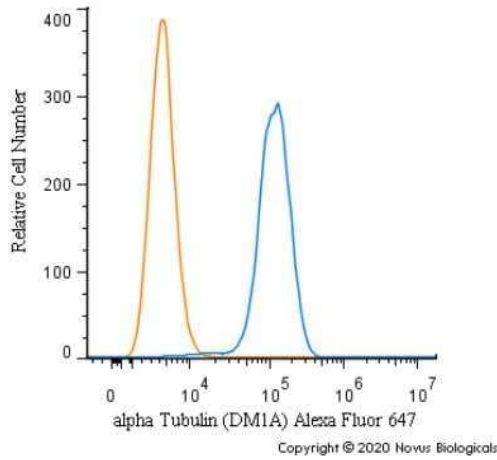
Flow Cytometry: alpha Tubulin Antibody (DM1A) TA309923 - An intracellular stain was performed on HeLa cells with alpha Tubulin [DM1A] Antibody TA309923AF700 (blue) and a matched isotype control (orange). Cells were fixed with 4% PFA and then permeabilized with 0.1% saponin. Cells were incubated in an antibody dilution of 5 ug/mL for 30 minutes at room temperature. Both antibodies were conjugated to Alexa Fluor 700.



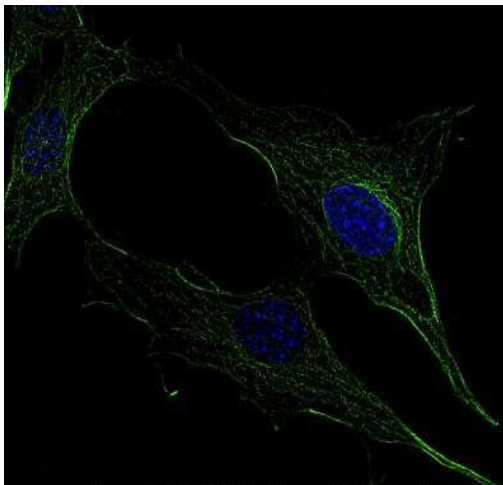
Immunocytochemistry/Immunofluorescence: alpha Tubulin Antibody (DM1A) TA309923 - HeLa cells were fixed for 10 minutes using 10% formalin and then permeabilized for 5 minutes using 1X TBS + 0.5% Triton-X100. The cells were incubated with anti-alpha Tubulin (DM1A) (TA309923) at a 1:200 dilution overnight at 4C and detected with an anti-mouse Dylight 488 (Green) at a 1:500 dilution. Nuclei were counterstained with DAPI (Blue). Cells were imaged using a 40X objective.



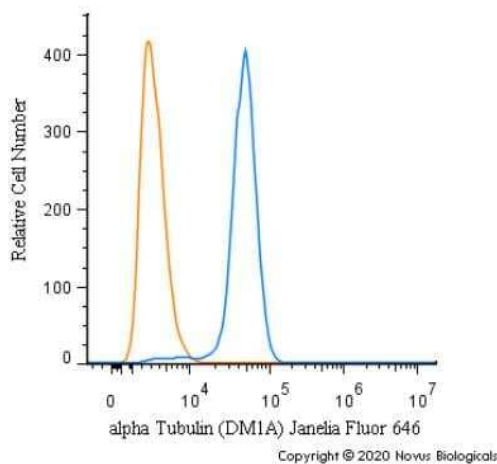
Immunohistochemistry-Paraffin: alpha Tubulin Antibody (DM1A) TA309923 - IHC analysis of a formalin fixed paraffin embedded tissue section of mouse skeletal muscle using alpha Tubulin Antibody (DM1A) at 1:100 dilution with HRP-DAB detection and hematoxylin counterstaining. The antibody generated a strong cytoplasmic signal in the muscle cells with cytoplasmic-nuclear signal in the endothelial cells.



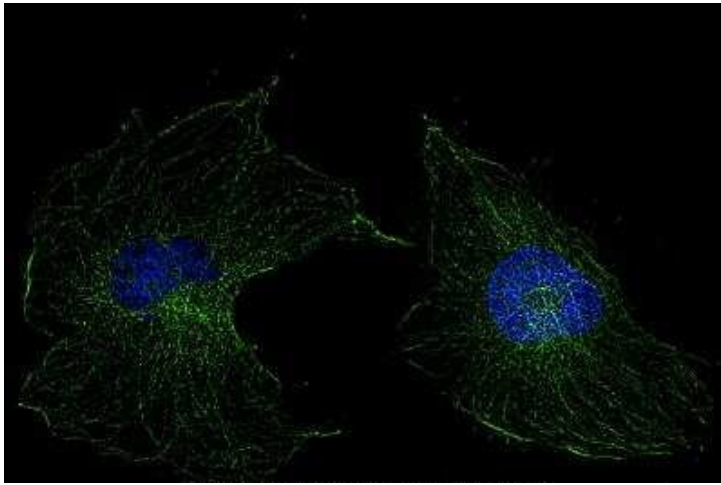
Flow Cytometry: alpha Tubulin Antibody (DM1A) TA309923 - An intracellular stain was performed on HeLa cells with alpha Tubulin [DM1A] Antibody TA309923AF647 (blue) and a matched isotype control (orange). Cells were fixed with 4% PFA and then permeabilized with 0.1% saponin. Cells were incubated in an antibody dilution of 2.5 ug/mL for 30 minutes at room temperature. Both antibodies were conjugated to Alexa Fluor 647.



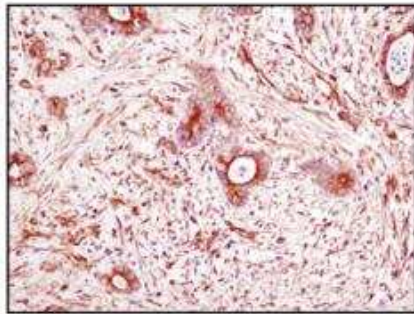
Immunocytochemistry/Immunofluorescence: alpha Tubulin Antibody (DM1A) TA309923 - NIH3T3 cells were fixed in 4% paraformaldehyde for 10 minutes and permeabilized in 0.05% Triton X-100 in PBS for 5 minutes. The cells were incubated with anti-alpha Tubulin Antibody [DM1A] conjugated to Alexa Fluor 488 (TA309923AF488) at 5 ug/ml for 1 hour at room temperature. Nuclei were counterstained with DAPI (Blue). Cells were imaged using a 100X objective and digitally deconvolved.



Flow Cytometry: alpha Tubulin Antibody (DM1A) TA309923 - An intracellular stain was performed on HeLa cells with alpha Tubulin (DM1A) Antibody TA309923JF646 (blue) and a matched isotype control (orange). Cells were fixed with 4% PFA and then permeabilized with 0.1% saponin. Cells were incubated in an antibody dilution of 2.5 ug/mL for 30 minutes at room temperature. Both antibodies were conjugated to Janelia Fluor 646.



Immunocytochemistry/Immunofluorescence: alpha Tubulin Antibody (DM1A) TA309923 - U-251 MG cells were fixed in 4% paraformaldehyde for 10 minutes and permeabilized in 0.05% Triton X-100 in PBS for 5 minutes. The cells were incubated with anti-alpha Tubulin Antibody [DM1A] conjugated to Alexa Fluor 488 (TA309923AF488) at 5 ug/ml for 1 hour at room temperature. Nuclei were counterstained with DAPI (Blue). Cells were imaged using a 100X objective and digitally deconvolved.



Immunohistochemistry: alpha Tubulin Antibody (DM1A) TA309923 - Analysis of paraffin embedded colon sections.



Immunohistochemistry: alpha Tubulin Antibody (DM1A) TA309923 - Analysis of formalin fixed paraffin embedded heart sections. Used at a dilution of 1:500.