

## Product datasheet for **TA309922**

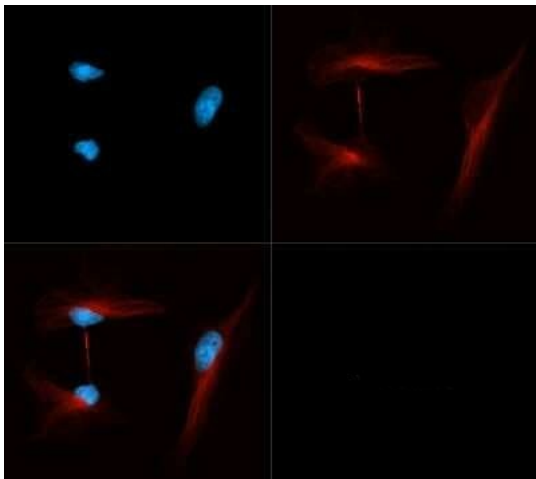
### alpha Tubulin (TUBA1A) Rat Monoclonal Antibody [Clone ID: YL1/2]

#### Product data:

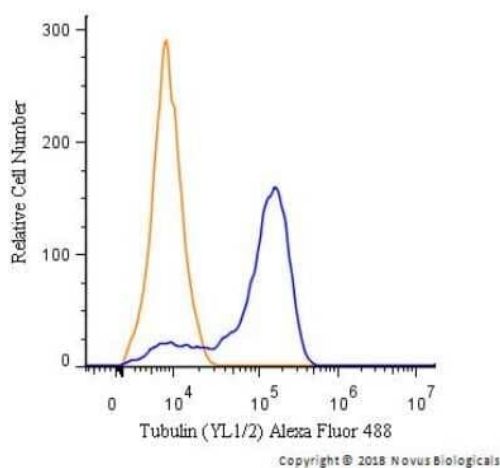
Product Type:	Primary Antibodies
Clone Name:	YL1/2
Applications:	ELISA, FC, ICC/IF, IHC, IP, WB
Recommended Dilution:	ELISA: 1:100-1:1000, Immunohistochemistry: 1:200, Immunoprecipitation: 1:10-1:500, Western Blot: 1:5000-1:10000, Immunohistochemistry-Frozen: 1:200, Radioimmunoassay, Immunocytochemistry/ Immunofluorescence: 1:1000-1:10000, Functional, Immunohistochemistry-Paraffin: 1:200, Flow Cytometry: 2-5 ug/0.1x10 <sup>6</sup> cells
Reactivity:	Human, Mammalian, Mouse, Rat, Yeast
Host:	Rat
Isotype:	IgG2a
Clonality:	Monoclonal
Immunogen:	Full length native protein (purified) ( <i>S. cerevisiae</i> ).
Formulation:	PBS, [pH7.4] and 0.09% Sodium Azide
Concentration:	lot specific
Purification:	Protein G purified
Conjugation:	Unconjugated
Storage:	Store at -20°C as received.
Stability:	Stable for 12 months from date of receipt.
Gene Name:	tubulin alpha 1a
Database Link:	<a href="#">NP_006000</a> <a href="#">Entrez Gene 22142 Mouse</a> <a href="#">Entrez Gene 64158 Rat</a> <a href="#">Entrez Gene 7846 Human</a> <a href="#">Q71U36</a>
Synonyms:	B-ALPHA-1; LIS3; TUBA3
Protein Families:	Druggable Genome
Protein Pathways:	Gap junction, Pathogenic Escherichia coli infection



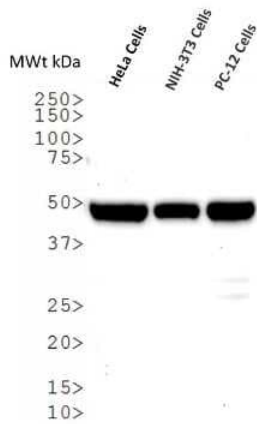
[View online »](#)

**Product images:**

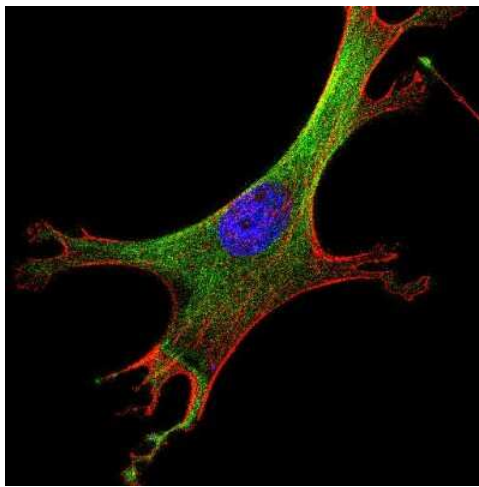
Immunocytochemistry/Immunofluorescence:  
alpha Tubulin Antibody (YL1/2) TA309922 -  
Tubulin YL1/2 antibody was tested in HeLa cells  
with Dylight 550 (red). Nuclei were  
counterstained with DAPI (blue).



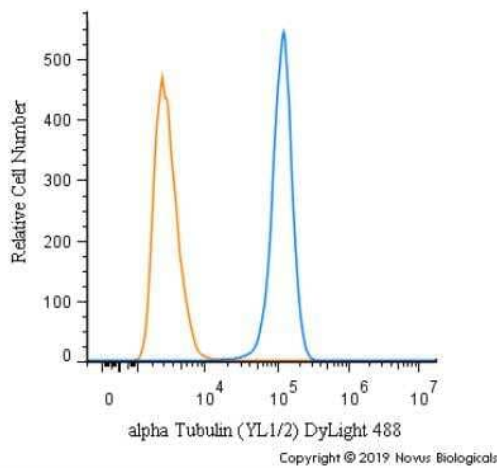
Flow Cytometry: alpha Tubulin Antibody (YL1/2)  
TA309922 - An intracellular stain was performed  
on PC12 cells with Tubulin [YL1/2] Antibody  
TA309922AF488 (blue) and a matched isotype  
control (orange). Cells were fixed with 4% PFA and  
then permeabilized with 0.1% saponin. Cells were  
incubated in an antibody dilution of 5 ug/mL for  
30 minutes at room temperature. Both  
antibodies were conjugated to Alexa Fluor 488.



Western Blot: alpha Tubulin Antibody (YL1/2) TA309922 - Western Blot analysis of whole cell lysates of HeLa, NIH-3T3 and PC-12 cell lines using Tubulin antibody (clone YL1/2). Alpha tubulin molecular weight: 50 kDa.



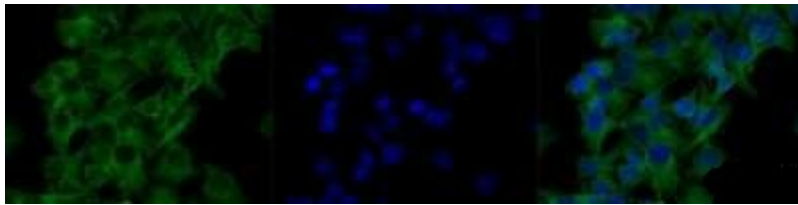
Immunocytochemistry/Immunofluorescence: alpha Tubulin Antibody (YL1/2) TA309922 - IF Confocal analysis of NIH/3T3 cells using Tubulin antibody (TA309922, 1:5). An Alexa Fluor 488-conjugated Goat to rat IgG was used as secondary antibody (green). Actin filaments were labeled with Alexa Fluor 568 phalloidin (red). DAPI was used to stain the cell nuclei (blue).



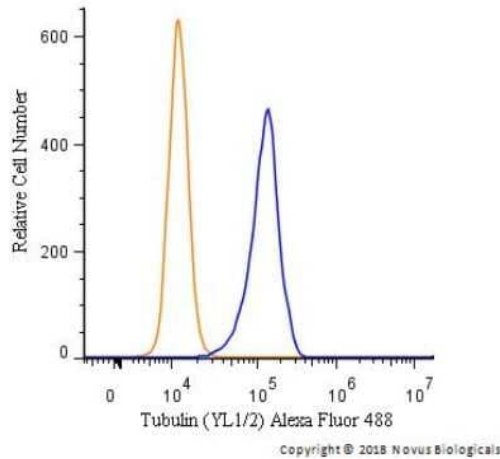
Flow Cytometry: alpha Tubulin Antibody (YL1/2) TA309922 - An intracellular stain was performed on SH-SY5Y cells with alpha Tubulin (YL1/2) Antibody [TA309922G] (blue) and a matched isotype control (orange). Cells were fixed with 4% PFA and then permeabilized with 0.1% saponin. Cells were incubated in an antibody dilution of 5 ug/mL for 30 minutes at room temperature. Both antibodies were conjugated to DyLight 488.



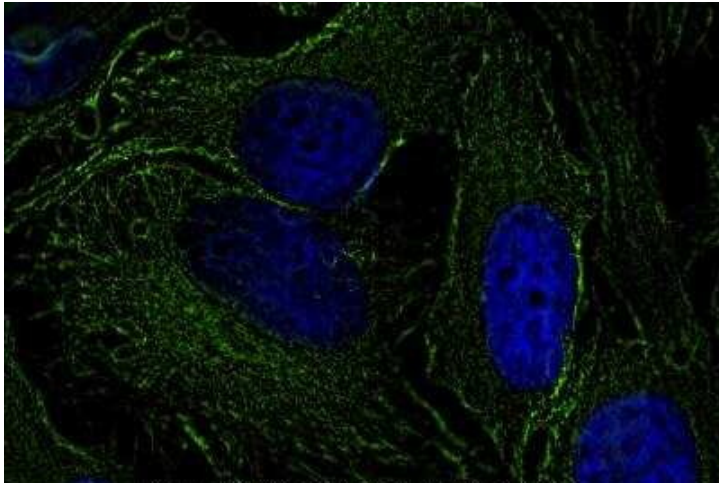
Western Blot: alpha Tubulin Antibody (YL1/2) TA309922 - Western blot analysis of alpha Tubulin (molecular weight: 50 kDa) expression in 1) HeLa, 2) NTERA-2, 3) A431, 4) HepG2, 5) MCF7, 6) NIH-3T3, 7) PC-12 and 8) Cos 7 whole cell lysates using TA309922.



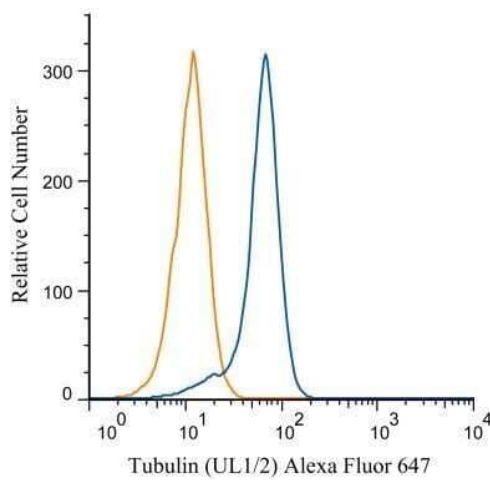
Immunocytochemistry/Immunofluorescence: alpha Tubulin Antibody (YL1/2) TA309922 - HeLa cells were fixed and permeabilized for 10 minutes using -20C MeOH. The cells were incubated with anti-Tubulin (YL1/2) at a 1:200 dilution overnight at 4C and detected with an anti-rat Dylight 488 (Green) at a 1:500 dilution. Nuclei were counterstained with DAPI (Blue). Cells were imaged using a 40X objective.



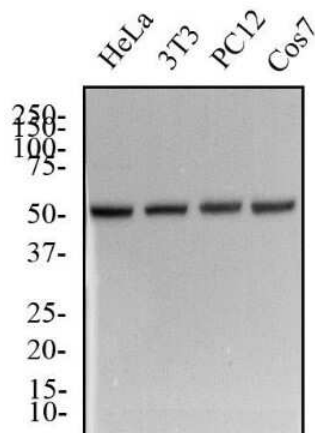
Flow Cytometry: alpha Tubulin Antibody (YL1/2) TA309922 - An intracellular stain was performed on NIH3T3 cells with Tubulin [YL1/2] Antibody TA309922AF488 (blue) and a matched isotype control (orange). Cells were fixed with 4% PFA and then permeabilized with 0.1% saponin. Cells were incubated in an antibody dilution of 5 ug/mL for 30 minutes at room temperature. Both antibodies were conjugated to Alexa Fluor 488.



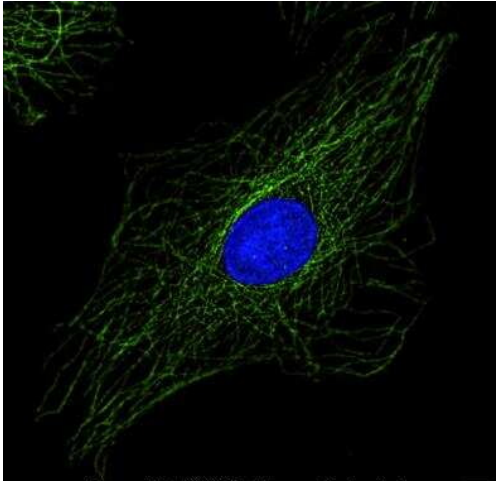
Immunocytochemistry/Immunofluorescence: alpha Tubulin Antibody (YL1/2) TA309922 - HeLa cells were fixed and permeabilized for 10 minutes with -20C MeOH. The cells were incubated with alpha Tubulin Antibody [YL1/2] (TA309922) at 1ug/ml overnight at 4C and detected with an anti-rat DyLight 488 (Green) at a 1:1000 dilution for 60 minutes. Nuclei were counterstained with DAPI (Blue). Cells were imaged using a 100X objective and digitally deconvolved.



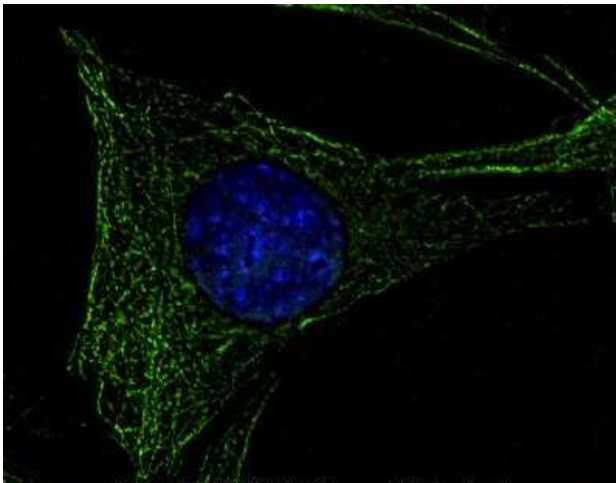
Flow Cytometry: alpha Tubulin Antibody (YL1/2) TA309922 - Analysis of Alexa Fluor (R) 647 conjugate of TA309922. An intracellular stain was performed on HeLa cells with Tubulin antibody (YL1/2) TA309922AF647 (blue) and a matched isotype control (orange). Cells were fixed with 4% PFA and then permeabilized with 0.1% saponin. Cells were incubated in an antibody dilution of 2.5 ug/mL for 30 minutes at room temperature. Both antibodies were conjugated to Alexa Fluor 647.



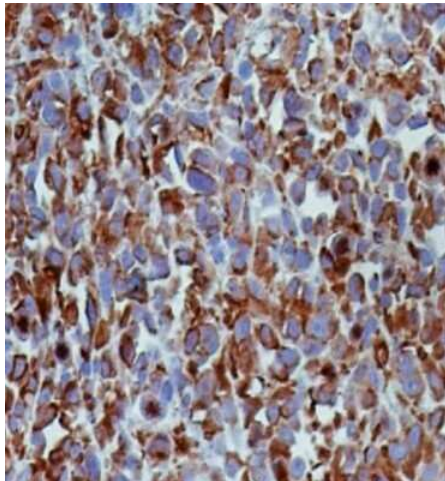
Western Blot: alpha Tubulin Antibody (YL1/2) TA309922 - Total protein from human HeLa, mouse 3T3, rat PC12 and African green monkey Cos7 cell lines was separated on a 12% gel by SDS-PAGE, transferred to PVDF membrane and blocked in 5% non-fat milk in TBST. The membrane was probed with a 1:6000 dilution of anti-Tubulin (YL 1/2) in 1% non-fat milk in TBST and detected with an anti-rat HRP secondary antibody using chemiluminescence. Alpha tubulin molecular weight: 50 kDa.



Immunocytochemistry/Immunofluorescence: alpha Tubulin Antibody (YL1/2) TA309922 - Rat FR cells were fixed and permeabilized for 10 minutes with -20C MeOH. The cells were incubated with alpha Tubulin Antibody [YL1/2] (TA309922) at 1ug/ml overnight at 4C and detected with an anti-rat DyLight 488 (Green) at a 1:1000 dilution for 60 minutes. Nuclei were counterstained with DAPI (Blue). Cells were imaged using a 100X objective and digitally deconvolved.



Immunocytochemistry/Immunofluorescence: alpha Tubulin Antibody (YL1/2) TA309922 - NIH3T3 cells were fixed and permeabilized for 10 minutes with -20C MeOH. The cells were incubated with alpha Tubulin Antibody [YL1/2] (TA309922) at 1ug/ml overnight at 4C and detected with an anti-rat DyLight 488 (Green) at a 1:1000 dilution for 60 minutes. Nuclei were counterstained with DAPI (Blue). Cells were imaged using a 100X objective and digitally deconvolved.



Immunohistochemistry-Paraffin: alpha Tubulin Antibody (YL1/2) TA309922 - Tubulin antibody was tested in human breast cancer xenograft using DAB with hematoxylin counterstain.