

## Product datasheet for **TA309902**

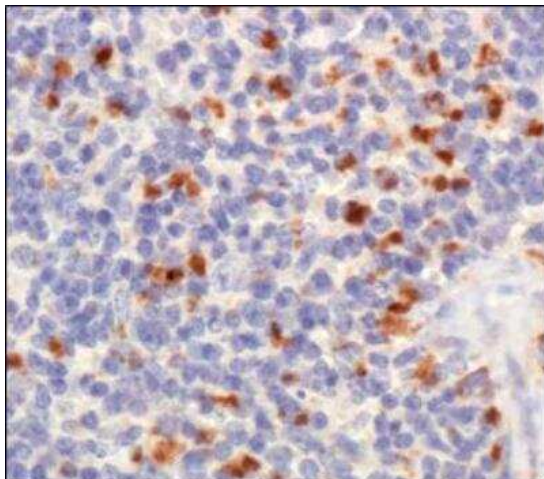
### TET1 Rabbit Polyclonal Antibody

#### Product data:

Product Type:	Primary Antibodies
Applications:	IF, IHC, WB
Recommended Dilution:	ICC/IF (Negative), Immunohistochemistry-Paraffin: 1:400, Immunohistochemistry: 1:400, Western Blot (Negative)
Reactivity:	Human, Mouse
Host:	Rabbit
Clonality:	Polyclonal
Immunogen:	A synthetic peptide made to an internal portion of the human TET1 protein (between residues 1700 to 1800) [UniProt Q8NFU7]
Formulation:	PBS, 30% glycerol and 0.05% Sodium Azide
Purification:	Affinity purified
Conjugation:	Unconjugated
Storage:	Store at -20°C as received.
Stability:	Stable for 12 months from date of receipt.
Gene Name:	tet methylcytosine dioxygenase 1
Database Link:	<a href="#">NP_085128</a> <a href="#">Entrez Gene 52463 Mouse</a> <a href="#">Entrez Gene 80312 Human</a> <a href="#">Q8NFU7</a>
Synonyms:	bA119F7.1; CXXC6; LCX



[View online »](#)

**Product images:**

Immunohistochemistry: TET1 Antibody TA309902  
- Analysis of TET1 in mouse spleen using DAB  
with hematoxylin counterstain.