

Product datasheet for **TA309898**

ETS1 associated protein II (TDP2) Rabbit Polyclonal Antibody

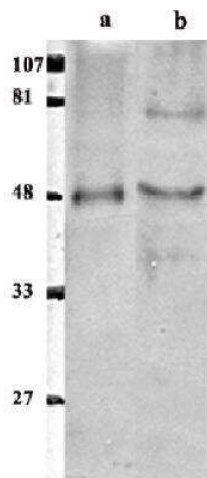
Product data:

Product Type:	Primary Antibodies
Applications:	WB
Recommended Dilution:	Western Blot: 1:1000-1:5000
Reactivity:	Human
Host:	Rabbit
Clonality:	Polyclonal
Immunogen:	A synthetic peptide made to residues 11-28 (REAAEEEGEPEVKKRRL) of human EAPII.
Formulation:	PBS and 0.02% Sodium Azide
Purification:	Immunogen affinity purified
Conjugation:	Unconjugated
Storage:	Store at -20°C as received.
Stability:	Stable for 12 months from date of receipt.
Gene Name:	tyrosyl-DNA phosphodiesterase 2
Database Link:	NP_057698 Entrez Gene 51567 Human O95551
Synonyms:	AD022; dj30M3.3; EAP2; EAPII; hTDP2; TTRAP
Protein Families:	Druggable Genome, Stem cell - Pluripotency, Transcription Factors



[View online »](#)

Product images:



Western Blot: ETS1 associated protein II Antibody TA309898 - Satining of Human Cancer cell line (b) and purified EAPII protein (a) as control. In cell lines, polyclonal often detects an additional higher molecular weight band that may represent a homo or hetero-dimer.