

Product datasheet for **TA309890**

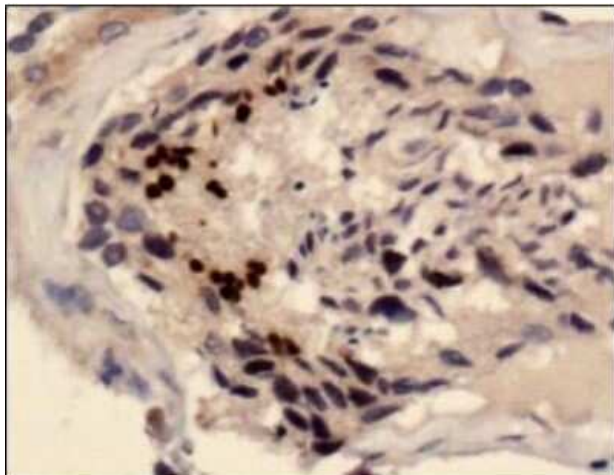
SCP3 (SYCP3) Rabbit Polyclonal Antibody

Product data:

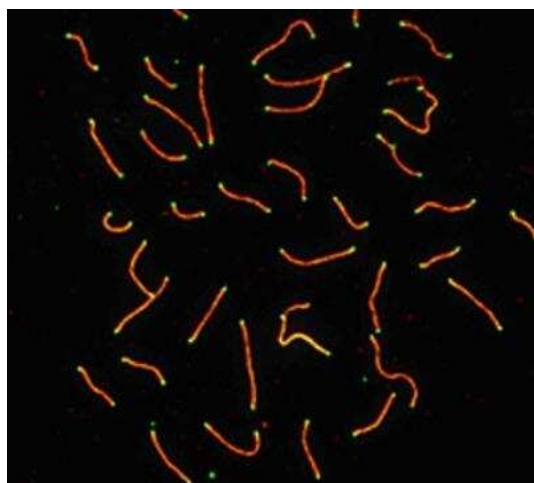
Product Type:	Primary Antibodies
Applications:	ICC/IF, IHC, Immunoblotting, IP, WB
Recommended Dilution:	Immunocytochemistry/ Immunofluorescence: 1:100-1:500, Western Blot: 0.5 ug/ml, Immunohistochemistry-Frozen: 1:200-1:500, Immunoblotting, Immunoprecipitation, Immunohistochemistry-Paraffin: 1:100 - 1:500, Immunohistochemistry: 1:200-1:500
Reactivity:	Human, Mouse, Porcine, Rat
Host:	Rabbit
Clonality:	Polyclonal
Immunogen:	A synthetic peptide made to the C-terminal region of the human SCP3 protein.
Formulation:	PBS and 0.09% Sodium Azide
Concentration:	lot specific
Purification:	Immunogen affinity purified
Conjugation:	Unconjugated
Storage:	Store at -20°C as received.
Stability:	Stable for 12 months from date of receipt.
Gene Name:	synaptonemal complex protein 3
Database Link:	NP_001171419 Entrez Gene 20962 Mouse Entrez Gene 25561 Rat Entrez Gene 50511 Human Q8IZU3
Synonyms:	COR1; SCP3; SPGF4



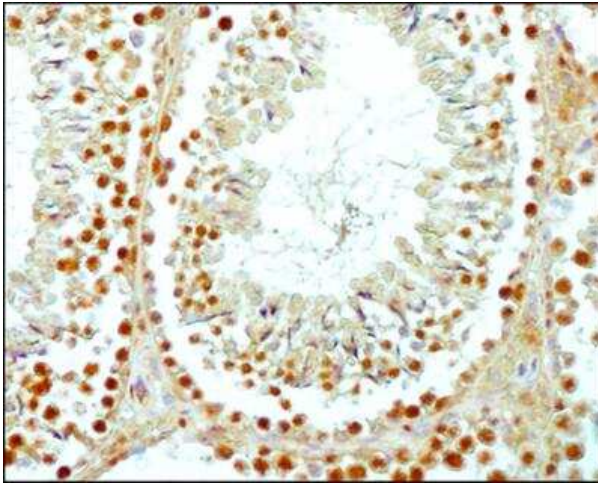
[View online »](#)

Product images:

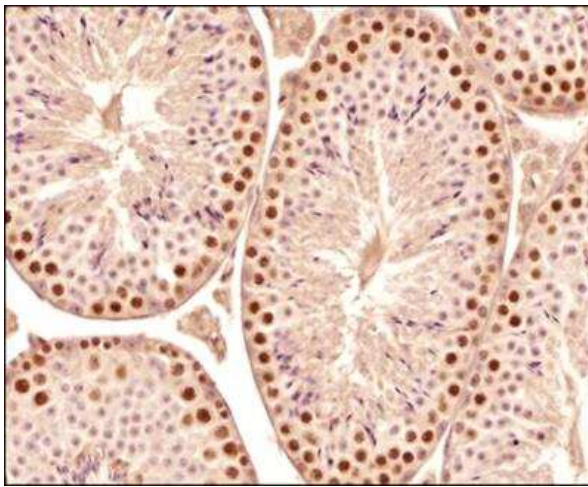
Immunohistochemistry-Paraffin: SCP3/SYCP3 Antibody TA309890 - Analysis of SCP3 in human testis using DAB with hematoxylin counterstain.



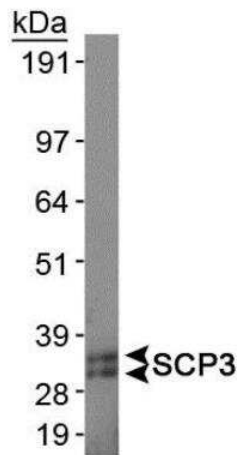
Immunocytochemistry/Immunofluorescence: SCP3/SYCP3 Antibody TA309890 - SCP3 Antibody TA309890 - SCP3 labeled in mouse pachytene preparation (red), using TA309890 SCP3 antibody. CDK2 staining, near telomeres, is also present (green).



Immunohistochemistry-Paraffin: SCP3/SYCP3 Antibody TA309890 - IHC-P analysis of formalin fixed paraffin embedded tissue section of mouse testes using SCP3 antibody at 1:200 dilution. Specific staining may be seen in the spermatogonial cells and the primary spermatocytes.



Immunohistochemistry-Paraffin: SCP3/SYCP3 Antibody TA309890 - IHC analysis of a formalin fixed and paraffin embedded tissue section of Mouse testis using SCP3 antibody at 1:1000 dilution. The signal was detected using HRP-DAB detection method and the nuclei were counterstained with hematoxylin. The antibody generated a specific signal of SCP3 in the spermatogonial cells and the spermatocytes. The signal was strongest in the nuclei of spermatogonial cells.



Western Blot: SCP3/SYCP3 Antibody TA309890 - SCP3 Antibody TA309890 - Analysis of SCP3 in mouse testis protein.