

Product datasheet for **TA309889**

SCP1 (SYCP1) Rabbit Polyclonal Antibody

Product data:

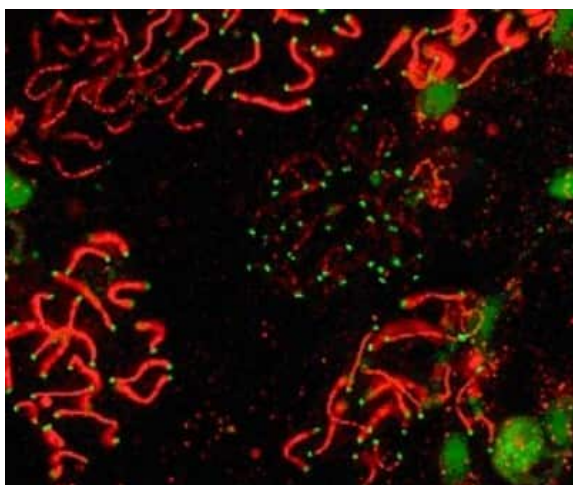
Product Type:	Primary Antibodies
Applications:	ICC/IF, IHC, Immunoblotting, Simple Western, WB
Recommended Dilution:	Western Blot, Immunohistochemistry-Paraffin, Immunoblotting, Immunohistochemistry, Simple Western: 1:200, Immunocytochemistry/ Immunofluorescence: 1:300-1:750
Reactivity:	Human, Mouse, Rat
Host:	Rabbit
Clonality:	Polyclonal
Immunogen:	A C-terminal synthetic peptide made to the human SCP1 protein sequence.
Formulation:	Tris-citrate/phosphate, pH 7-8. and 0.1% Sodium Azide
Concentration:	lot specific
Purification:	Affinity purified
Conjugation:	Unconjugated
Storage:	Store at -20°C as received.
Stability:	Stable for 12 months from date of receipt.
Gene Name:	synaptonemal complex protein 1
Database Link:	NP_003167 Entrez Gene 20957 Mouse Entrez Gene 25276 Rat Entrez Gene 6847 Human Q15431
Synonyms:	CT8; HOM-TES-14; SCP-1; SCP1



[View online »](#)

Product images:

Simple Western: SCP1 Antibody TA309889 - Lane view shows a specific band for SCP1 in 0.5 mg/ml of Human Testis (left) and Mouse Testis (right) lysate. This experiment was performed under reducing conditions using the 12-230 kDa separation system. * Non-specific interaction with the 230 kDa Simple Western standard may be seen with this antibody



Immunocytochemistry/Immunofluorescence: SCP1 Antibody TA309889 - SCP1 labeled in mouse pachytene preparation (red), using NB 300-228. CDK2 staining, near telomeres, is also present (green).