

Product datasheet for **TA309884**

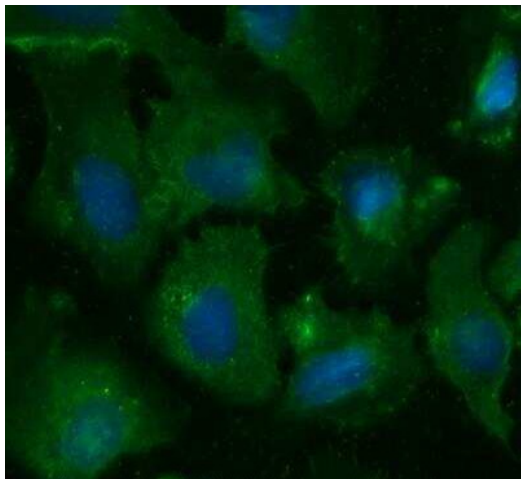
Somatostatin Receptor 2 (SSTR2) Rabbit Polyclonal Antibody

Product data:

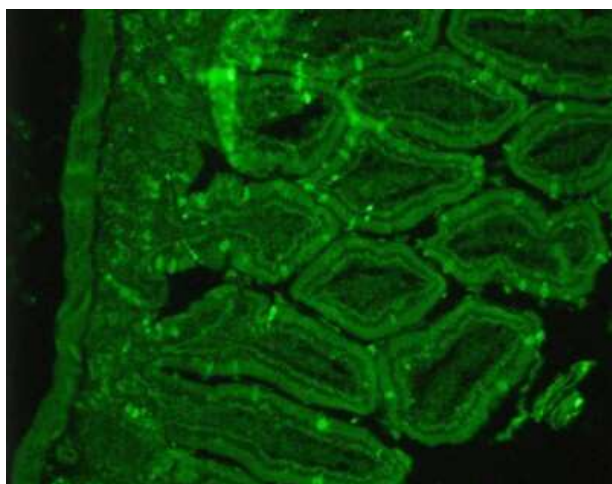
Product Type:	Primary Antibodies
Applications:	Electron Microscopy, FC, ICC/IF, IHC, IP, WB
Recommended Dilution:	Electron Microscopy, Immunohistochemistry-Paraffin: 1:100, Immunohistochemistry-Frozen: 1:100, Flow Cytometry, Western Blot: 1:100 - 1:1000, Immunocytochemistry/Immunofluorescence: 1:100 - 1:250, Immunoprecipitation: 1:10 - 1:500, Immunohistochemistry: 1:100
Reactivity:	Human, Mouse, Rat
Host:	Rabbit
Clonality:	Polyclonal
Immunogen:	A synthetic peptide made to the c-terminus of rat SSR2.
Formulation:	0.05% Sodium Azide
Purification:	Whole antisera
Conjugation:	Unconjugated
Storage:	Store at -20°C as received.
Stability:	Stable for 12 months from date of receipt.
Gene Name:	somatostatin receptor 2
Database Link:	NP_001041 Entrez Gene 20606 Mouse Entrez Gene 54305 Rat Entrez Gene 6752 Human P30874
Synonyms:	SRIF-1; SS2R
Protein Families:	Druggable Genome, GPCR, Transmembrane
Protein Pathways:	Neuroactive ligand-receptor interaction



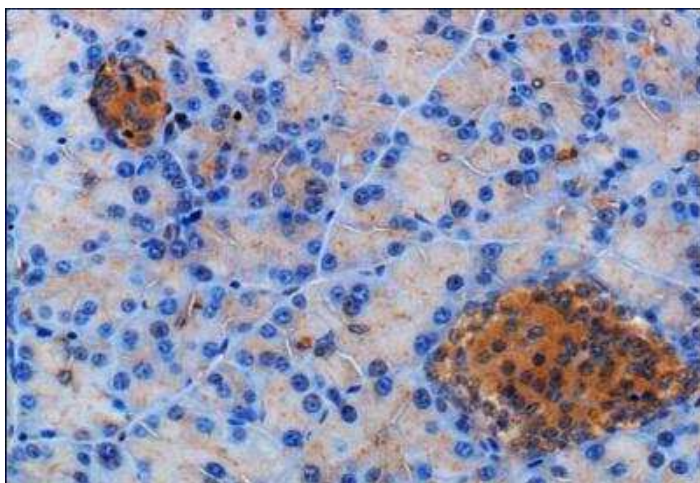
[View online »](#)

Product images:

Immunocytochemistry/Immunofluorescence: Somatostatin R2/SSTR2 Antibody TA309884 - U2OS cells were fixed for 10 minutes using 10% formalin and then permeabilized for 5 minutes using 1X PBS + 0.05% Triton X-100. The cells were incubated with antibody at 1:50 overnight at 4C and detected with an anti-rabbit Dylight 488 (Green) at 1:500. Nuclei were counterstained with DAPI (Blue). Cells were imaged using a 40X objective.



Immunohistochemistry-Paraffin: Somatostatin R2/SSTR2 Antibody TA309884 - Staining of paraffin embedded rat pancreas tissue.



Immunohistochemistry-Paraffin: Somatostatin R2/SSTR2 Antibody TA309884 - Staining of Somatostatin Receptor 2 in mouse pancreas using DAB with hematoxylin counterstain.