

Product datasheet for **TA309883**

Somatostatin Receptor 1 (SSTR1) Rabbit Polyclonal Antibody

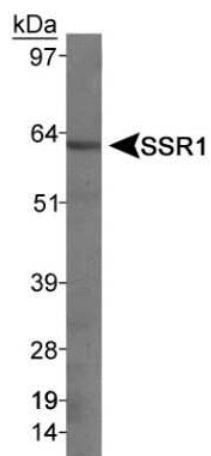
Product data:

Product Type:	Primary Antibodies
Applications:	IP, WB
Recommended Dilution:	Immunoprecipitation: 1:10-1:500, Western Blot: 1:1000-1:5000
Reactivity:	Human, Mouse, Rat
Host:	Rabbit
Clonality:	Polyclonal
Immunogen:	Raised against a synthetic peptide from the c-terminus of rat SSR1 receptor conjugated to cysteine.
Formulation:	0.05% Sodium Azide
Purification:	Whole antisera
Conjugation:	Unconjugated
Storage:	Store at -20°C as received.
Stability:	Stable for 12 months from date of receipt.
Gene Name:	somatostatin receptor 1
Database Link:	NP_001040 Entrez Gene 20605 Mouse Entrez Gene 25033 Rat Entrez Gene 6751 Human P30872
Synonyms:	SRIF-2; SS-1-R; SS1-R; SS1R
Protein Families:	Druggable Genome, GPCR, Transmembrane
Protein Pathways:	Neuroactive ligand-receptor interaction



[View online »](#)

Product images:



Western Blot: Somatostatin Receptor 1 Antibody TA309883 - Detection of SSR1 from rat pancreas using TA309883 (1:1000).