

Product datasheet for **TA309882**

FUSIP1 (SRSF10) Rabbit Polyclonal Antibody

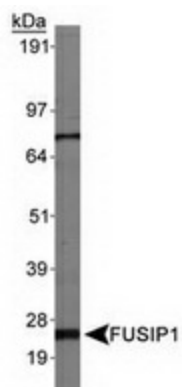
Product data:

Product Type:	Primary Antibodies
Applications:	WB
Recommended Dilution:	WB
Reactivity:	Human, Mouse
Host:	Rabbit
Clonality:	Polyclonal
Immunogen:	Synthetic peptide made to an internal portion of the human protein (within residues 100-200). [Swiss-Prot# O75494]
Formulation:	Tris-citrate/phosphate, pH 7-8 and 0.1% Sodium Azide
Concentration:	lot specific
Purification:	Peptide affinity purified
Conjugation:	Unconjugated
Storage:	Store at -20°C as received.
Stability:	Stable for 12 months from date of receipt.
Gene Name:	serine/arginine-rich splicing factor 10
Database Link:	NP_001177934 Entrez Gene 14105 Mouse Entrez Gene 10772 Human O75494
Synonyms:	FUSIP1; FUSIP2; NSSR; PPP1R149; SFRS13; SFRS13A; SRp38; SRp40; TASR; TASR1; TASR2
Protein Families:	Transcription Factors
Protein Pathways:	Spliceosome



[View online »](#)

Product images:



Detection of FUSIP1, Isoform 3, in HepG2 whole cell lysates using anti-FUSIP1.