

Product datasheet for **TA309881**

SREBP1 (SREBF1) Rabbit Polyclonal Antibody

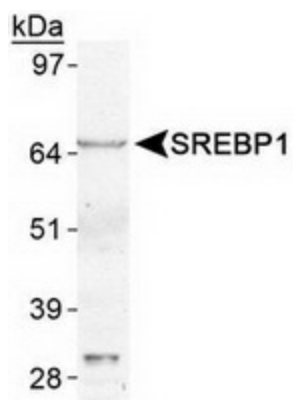
Product data:

Product Type:	Primary Antibodies
Applications:	WB
Recommended Dilution:	WB
Reactivity:	Bovine, Human, Mouse, Porcine, Rat, Hamster
Host:	Rabbit
Clonality:	Polyclonal
Immunogen:	A synthetic peptide made to a portion of the human SREBP1 protein sequence (between residues 700-800). [Uniprot# P36956]
Formulation:	Tris-glycine, 150 mM NaCl and 0.05% Sodium Azide
Purification:	Peptide affinity purified
Conjugation:	Unconjugated
Storage:	Store at -20°C as received.
Stability:	Stable for 12 months from date of receipt.
Gene Name:	sterol regulatory element binding transcription factor 1
Database Link:	NP_004167 Entrez Gene 20787 Mouse Entrez Gene 78968 Rat Entrez Gene 6720 Human P36956
Synonyms:	bHLHd1; SREBP-1c; SREBP1; SREBP1a
Protein Families:	Druggable Genome, Transcription Factors
Protein Pathways:	Insulin signaling pathway



[View online »](#)

Product images:



Western Blot: SREBP1 Antibody - Detection of SREBP1 in human liver (40ug) using anti-SREBP1.