

Product datasheet for **TA309880**

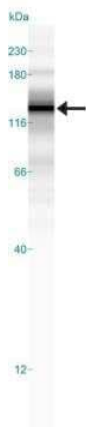
SREBP1 (SREBF1) Mouse Monoclonal Antibody [Clone ID: 2A4]

Product data:

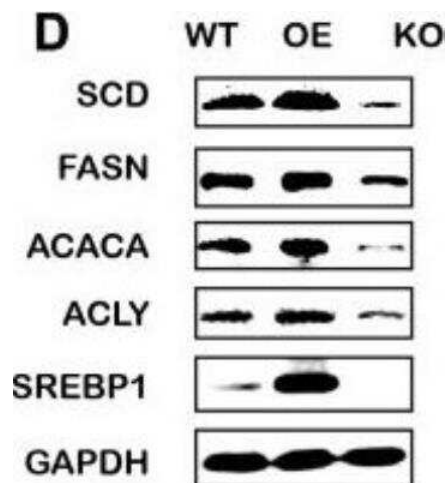
Product Type:	Primary Antibodies
Clone Name:	2A4
Applications:	IHC, Simple Western, WB
Recommended Dilution:	Western Blot: 1-2ug/ml, Simple Western: 1:12.5, Knockout Validated, Immunohistochemistry-Frozen
Reactivity:	Human, Mouse, Rat, Golden Syrian Hamster
Host:	Mouse
Isotype:	IgG1, kappa
Clonality:	Monoclonal
Immunogen:	6 His-tag fusion protein of SREBP1 corresponding to amino acids 301-407
Formulation:	Tris-glycine, 150mM NaCl and 0.05% Sodium Azide
Concentration:	lot specific
Purification:	Protein G purified
Conjugation:	Unconjugated
Storage:	Store at -20°C as received.
Stability:	Stable for 12 months from date of receipt.
Gene Name:	sterol regulatory element binding transcription factor 1
Database Link:	NP_004167 Entrez Gene 20787 Mouse Entrez Gene 78968 Rat Entrez Gene 6720 Human P36956
Synonyms:	bHLHd1; SREBP-1c; SREBP1; SREBP1a
Protein Families:	Druggable Genome, Transcription Factors
Protein Pathways:	Insulin signaling pathway



[View online »](#)

Product images:


Simple Western: SREBP1 Antibody (2A4) TA309880 - Lane view shows a specific band for SREBP1 in 1.0 mg/ml of HeLa lysate. This experiment was performed under reducing conditions using the 12-230 kDa separation system.



Knockout Validated: SREBP1 Antibody (2A4) TA309880 - KO and OE of SREBP1 influenced lipid metabolism in Bel-7402 cells. The protein level of lipid-associated genes in SREBP1-KO, SREBP1-OE, and WT Bel-7402 cells. Data were expressed as mean \pm standard error of the mean. * $P < 0.05$, ** $P < 0.01$, and *** $P < 0.001$ vs. WT group, respectively.



Western Blot: SREBP1 Antibody (2A4) TA309880 - Analysis of whole cell lysate from HeLa cells showing a single specific band for the expression of SREBP1 precursor protein (~120 kDa).