

Product datasheet for **TA309879**

SPTBN2 Rabbit Polyclonal Antibody

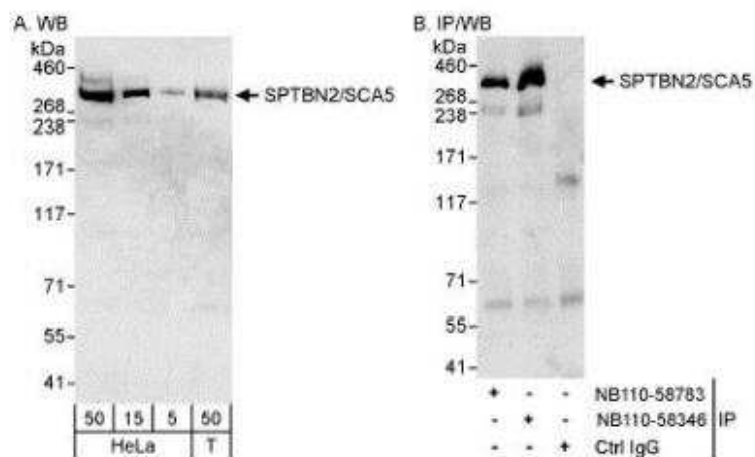
Product data:

Product Type:	Primary Antibodies
Applications:	ICC/IF, IHC, IP, WB
Recommended Dilution:	Immunocytochemistry/ Immunofluorescence, Western Blot: 1:2000-1:10000, Immunohistochemistry-Paraffin: 10-20 ug/ml, Immunohistochemistry: 10-20 ug/ml, Immunoprecipitation: 2-5 ug/mg lysate
Reactivity:	Human
Host:	Rabbit
Clonality:	Polyclonal
Immunogen:	The epitope recognized by this antibody maps to a C-terminal region between residue 2300 and 2390 of human spectrin, beta, non-erythrocytic 2 (spinocerebellar ataxia 5) using the numbering given in entry NP_008877.1
Formulation:	Tris-buffered Saline containing 0.1% BSA. and 0.09% Sodium Azide
Concentration:	lot specific
Purification:	Immunogen affinity purified
Conjugation:	Unconjugated
Storage:	Store at -20°C as received.
Stability:	Stable for 12 months from date of receipt.
Gene Name:	spectrin beta, non-erythrocytic 2
Database Link:	NP_008877 Entrez Gene 6712 Human O15020
Synonyms:	GTRAP41; SCA5; SCAR14

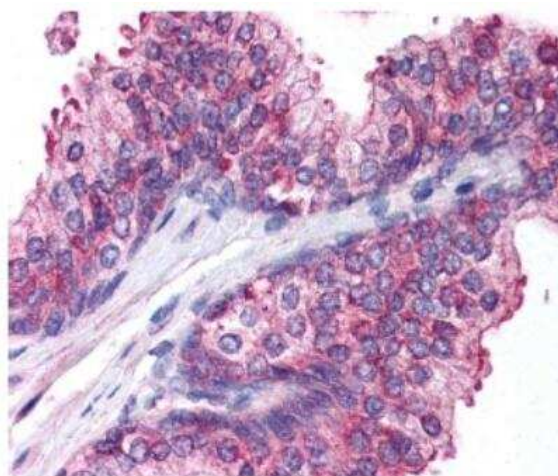


[View online »](#)

Product images:



Western Blot: Spectrin beta 3 Antibody TA309879 - Detection of Human Spectrin beta 3 on HeLa whole cell lysates using TA309879. Spectrin beta 3 was also immunoprecipitated by rabbit anti-Spectrin beta 3 antibody NB110-58783.



Immunohistochemistry-Paraffin: Spectrin beta 3 Antibody TA309879 - Detection of Spectrin beta 3 in human prostate epithelium.