

Product datasheet for **TA309878**

SPTBN2 Rabbit Polyclonal Antibody

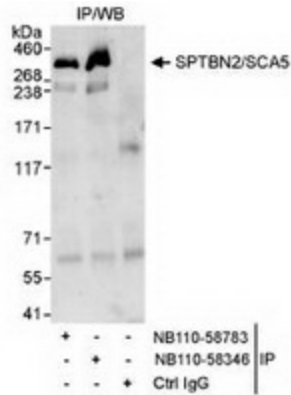
Product data:

Product Type:	Primary Antibodies
Applications:	IHC, WB
Recommended Dilution:	IP
Reactivity:	Human
Host:	Rabbit
Clonality:	Polyclonal
Immunogen:	The epitope recognized by this antibody maps to a region between residues 2150 and 2200 of human spectrin, beta, non-erythrocytic 2 (spinocerebellar ataxia 5) using the numbering given in entry NP_008877.1
Formulation:	Tris-citrate/phosphate buffer, pH 7 to 8 and 0.09% Sodium Azide
Concentration:	lot specific
Purification:	Immunogen affinity purified
Conjugation:	Unconjugated
Storage:	Store at -20°C as received.
Stability:	Stable for 12 months from date of receipt.
Gene Name:	spectrin beta, non-erythrocytic 2
Database Link:	NP_008877 Entrez Gene 6712 Human O15020
Synonyms:	GTRAP41; SCA5; SCAR14

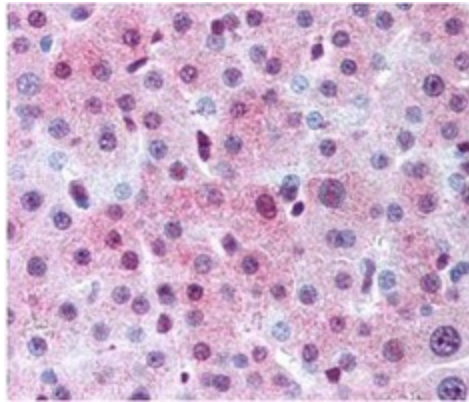


[View online »](#)

Product images:



Western Blot: Spectrin Beta III Antibody - Detection of Human SPTBN2/SCA5 by Western Blot of Immunoprecipitates. Samples: Whole cell lysate (1 mg for IP, 20% of IP loaded) from HeLa cells. Antibodies: Affinity purified rabbit anti-SPTBN2/SCA5 antibody anti-SPTBN2 used for IP at 3 mcg/mg lysate. SPTBN2/SCA5 was also immunoprecipitated by rabbit anti-SPTBN2/SCA5 antibody [TA309879], which recognizes a downstream epitope. Detection: Chemiluminescence with an exposure time of 30 seconds.



Detection of Spectrin Beta-III in human hepatocytes using anti-SPTBN2.