

Product datasheet for **TA309876**

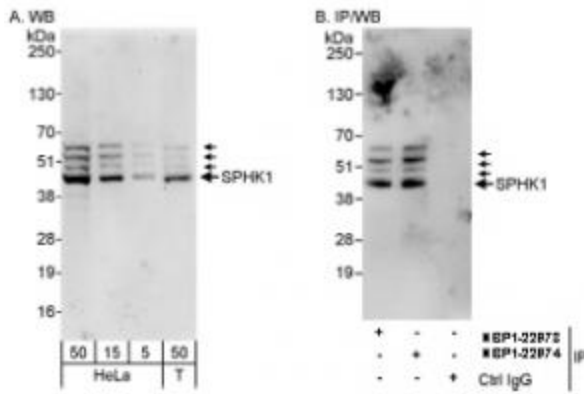
SPHK1 Rabbit Polyclonal Antibody

Product data:

Product Type:	Primary Antibodies
Applications:	WB
Recommended Dilution:	WB, IP
Reactivity:	Human
Host:	Rabbit
Isotype:	IgG
Clonality:	Polyclonal
Immunogen:	The epitope recognized by this antibody maps to a region between residue 334-384 of human sphingosine kinase 1 using the numbering given in entry NP_001136073.1
Formulation:	Tris-citrate/phosphate buffer, pH 7 to 8 and 0.09% Sodium Azide
Concentration:	lot specific
Purification:	Immunogen affinity purified
Conjugation:	Unconjugated
Storage:	Store at -20°C as received.
Stability:	Stable for 12 months from date of receipt.
Gene Name:	sphingosine kinase 1
Database Link:	NP_068807 Entrez Gene 8877 Human Q9NYA1
Synonyms:	SPHK
Protein Families:	Druggable Genome
Protein Pathways:	Calcium signaling pathway, Fc gamma R-mediated phagocytosis, Metabolic pathways, Sphingolipid metabolism, VEGF signaling pathway



[View online »](#)

Product images:


SPHK1 by Western Blot and Immunoprecipitation. Samples: Whole cell lysate from HeLa (5, 15 and 50 mcg for WB; 1 mg for IP, 20% of IP loaded) and 293T (T; 50 mcg) cells. Antibodies: Affinity purified rabbit anti-SPHK1 antibody used for WB at 0.1 mcg/ml (A) and 1 mcg/ml (B) and used for IP at 10 mcg/mg lysate. SPHK1 was also immunoprecipitated by rabbit anti-SPHK1 antibody, which recognizes an upstream epitope