

## Product datasheet for **TA309873**

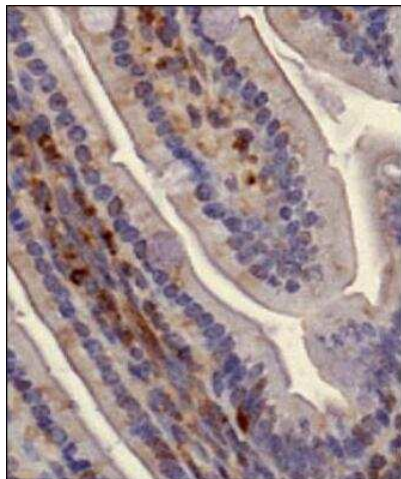
### SLIRP Rabbit Polyclonal Antibody

#### Product data:

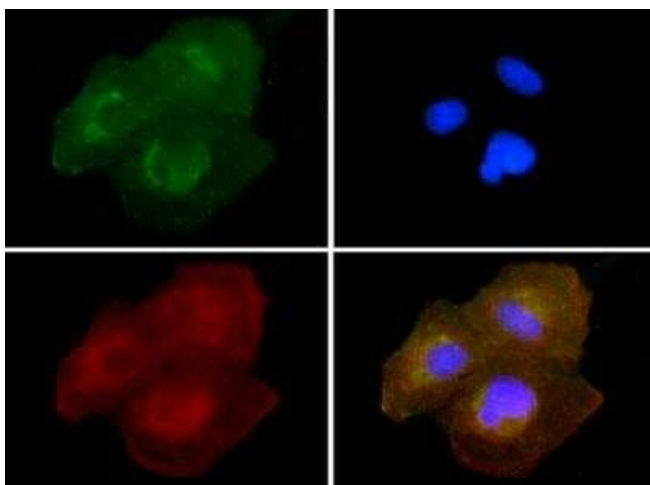
Product Type:	Primary Antibodies
Applications:	ICC/IF, IHC, WB
Recommended Dilution:	Immunohistochemistry: 1:100, Western Blot: 0.5-2.0 ug/ml, Immunohistochemistry-Paraffin: 1:100, Simple Western: 10 ug/ml, Immunocytochemistry/ Immunofluorescence: 1:10-1:500
Reactivity:	Human, Primate
Host:	Rabbit
Clonality:	Polyclonal
Immunogen:	A synthetic peptide made to a C-terminal region of human SLIRP protein. [Entrez-Prot# AAX58600]
Formulation:	Tris-glycine, 150mM NaCl and 0.05% Sodium Azide
Concentration:	lot specific
Purification:	Peptide affinity purified
Conjugation:	Unconjugated
Storage:	Store at -20°C as received.
Stability:	Stable for 12 months from date of receipt.
Gene Name:	SRA stem-loop interacting RNA binding protein
Database Link:	<a href="#">NP_112487</a> <a href="#">Entrez Gene 81892 Human</a> <a href="#">Q9GZT3</a>
Synonyms:	C14orf156; DC50; PD04872



[View online »](#)

**Product images:**

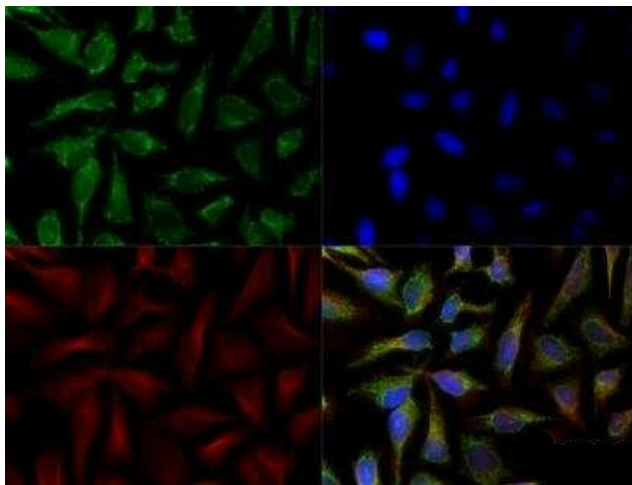
Immunohistochemistry: SLIRP Antibody TA309873 - Analysis of SLIRP in mouse intestine using DAB with hematoxylin counterstain.



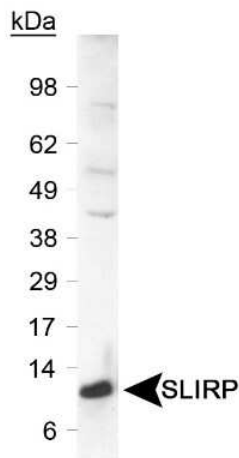
Immunocytochemistry/Immunofluorescence: SLIRP Antibody TA309873 - SLIRP antibody was tested in U2OS cells with FITC (green). Nuclei and alpha-tubulin were counterstained with DAPI (blue) and Dylight 550 (red).



Simple Western: SLIRP Antibody TA309873 - Simple Western lane view shows a specific band for SLIRP in 0.2 mg/ml of Human Liver lysate. This experiment was performed under reducing conditions using the 12-230 kDa separation system. \*Non-specific interaction with the 230 kDa standard may be seen with this antibody.



Immunocytochemistry/Immunofluorescence: SLIRP Antibody TA309873 - HeLa cells were fixed for 10 minutes using 10% formalin and then permeabilized for 5 minutes using 1X TBS + 0.5% Triton-X100. The cells were incubated with anti-SLIRP (TA309873) at a 1:200 dilution overnight at 4C and detected with an anti-rabbit Dylight 488 (Green) at a 1:500 dilution. Alpha tubulin was used as a co-stain at a 1:1000 dilution and detected with and anti-mouse Dylight 550 (Red) at a 1:500 dilution. Nuclei were counterstained with DAPI (Blue). Cells were imaged using a 40X objective.



Western Blot: SLIRP Antibody TA309873 - Detection of SLIRP protein in a human liver. Primary was used at 0.6 ug/ml.