

Product datasheet for **TA309871**

SLC9A3 Mouse Monoclonal Antibody [Clone ID: 14D5]

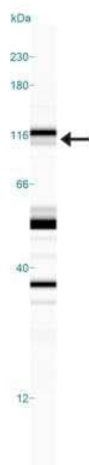
Product data:

Product Type:	Primary Antibodies
Clone Name:	14D5
Applications:	ELISA, FC, ICC/IF, IHC, IP, Simple Western, WB
Recommended Dilution:	Immunoprecipitation: 1:10-1:500, Western Blot: 1-5 ug/ml, Simple Western: 1:1000, ELISA: 1:100-1:2000, Immunohistochemistry: 1:50-1:1000, Immunocytochemistry/Immunofluorescence: 1:50-1:1000, Knockdown Validated, Knockout Validated, Flow Cytometry
Reactivity:	Human, Mouse, Rabbit, Rat, Opossum
Host:	Mouse
Clonality:	Monoclonal
Immunogen:	Synthetic peptide made to a region surrounding the Serine 552 portion of the rat protein.
Formulation:	Tris-glycine, 150mM NaCl and 0.05% Sodium Azide
Purification:	Protein G purified
Conjugation:	Unconjugated
Storage:	Store at -20°C as received.
Stability:	Stable for 12 months from date of receipt.
Gene Name:	solute carrier family 9 member A3
Database Link:	NP_004165 Entrez Gene 24784 Rat Entrez Gene 105243 Mouse Entrez Gene 6550 Human P48764
Synonyms:	NHE3
Protein Families:	Druggable Genome, Transmembrane

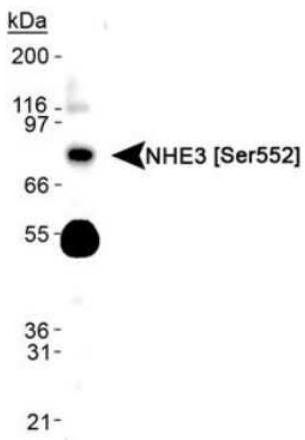


[View online »](#)

Product images:



Simple Western: NHE3/SLC9A3 [p Ser552] Antibody (14D5) TA309871 - Simple Western lane view shows a specific band for NHE3 in 0.5 mg/ml of Hek293 lysate. This experiment was performed under reducing conditions using the 12-230 kDa separation system.



Western Blot: NHE3/SLC9A3 [p Ser552] Antibody (14D5) TA309871 - Detection of NHE3 [p Ser552] in human kidney lysate.