

Product datasheet for **TA309869**

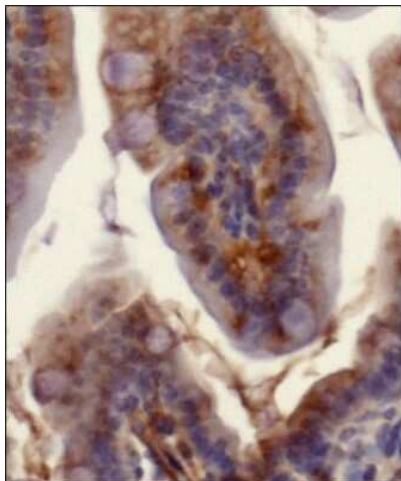
SLC40A1 Rabbit Polyclonal Antibody

Product data:

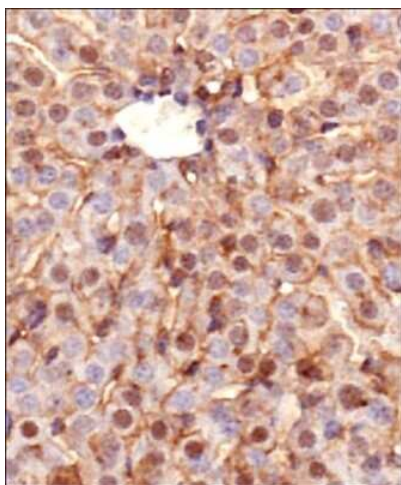
Product Type:	Primary Antibodies
Applications:	FC, ICC/IF, IHC, WB
Recommended Dilution:	Western Blot: 1.0 ug/ml, Immunohistochemistry: 1:200, Immunohistochemistry-Paraffin: 1:200, Immunocytochemistry/ Immunofluorescence, Flow (Intracellular), Flow Cytometry: 1.0 ug/ml
Reactivity:	Human, Mouse
Host:	Rabbit
Clonality:	Polyclonal
Immunogen:	Synthetic peptide made to an internal portion of the human protein (within residues 250-300). [Swiss-Prot# Q9NP59]
Formulation:	Tris-glycine, 150mM NaCl pH 7.5 and 0.05% Sodium Azide
Purification:	Peptide affinity purified
Conjugation:	Unconjugated
Storage:	Store at -20°C as received.
Stability:	Stable for 12 months from date of receipt.
Gene Name:	solute carrier family 40 member 1
Database Link:	NP_055400 Entrez Gene 53945 Mouse Entrez Gene 30061 Human Q9NP59
Synonyms:	FPN1; HFE4; IREG1; MST079; MSTP079; MTP1; SLC11A3
Protein Families:	Druggable Genome, Transmembrane



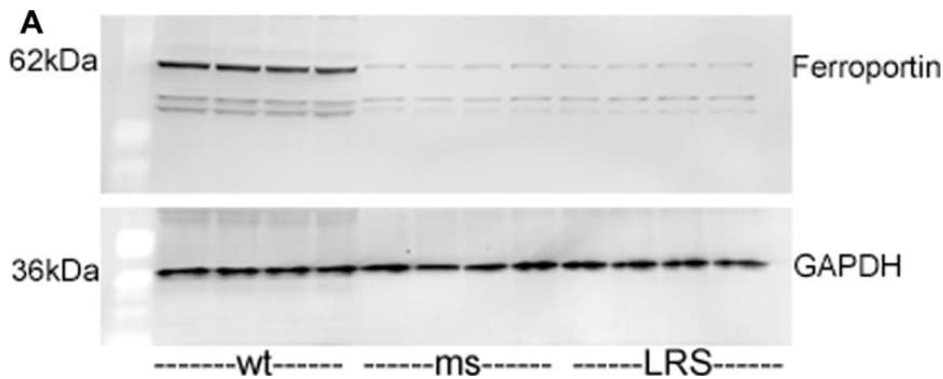
[View online »](#)

Product images:

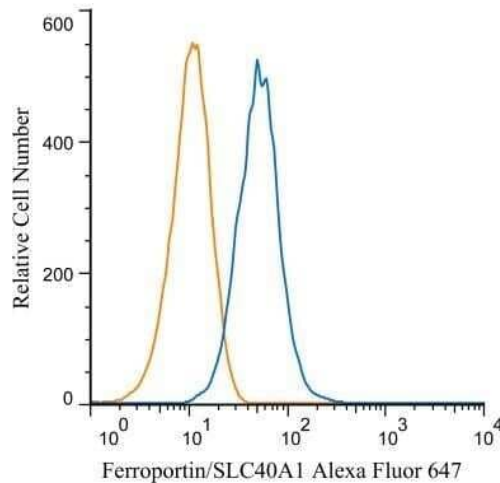
Detection of Ferroportin/SLC40A1 protein in murine small intestinal section using Ferroportin/SLC40A1 Antibody at a dilution of 1:200. The antibody primarily developed a membranous staining pattern in the intestinal epithelial cells.



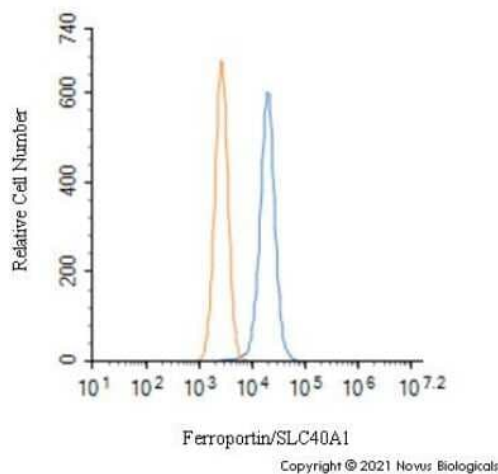
Detection of Ferroportin/SLC40A1 protein in murine liver section using Ferroportin/SLC40A1 Antibody at a dilution of 1:200. The representative image shows intense staining in the cellular membranes, whereas, a relatively milder positivity was observed in the cytoplasm of hepatocytes.



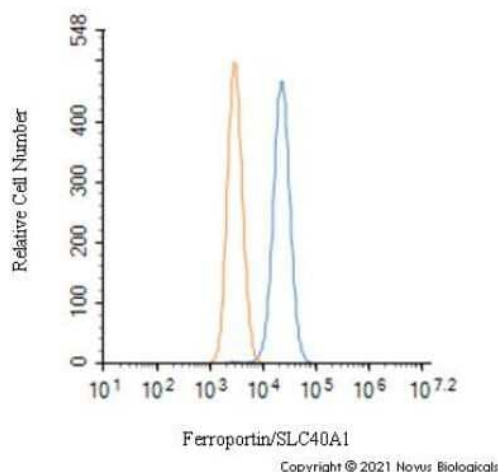
Mouse ferroportin, 5-aminolevulinic acid synthase (ALAS), and ferritin light chain (FLC) proteins are increased in sickle mice overexpressing human wt-FHC. Proteins of subcellular fractions isolated from livers of wt-, ms-, and LRS-treated mice (n = 4) were run on a western blot (30 ug protein/lane) and immunostained for (A) microsomal ferroportin.



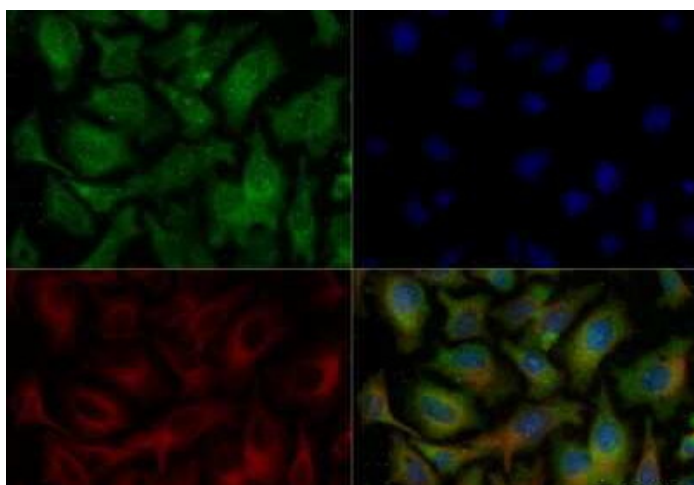
An intracellular stain was performed on HepG2 cells with TA309869AF647 (blue) and a matched isotype control (orange, NBP2-24893AF647). Cells were fixed with 4% PFA and then permeabilized with 0.1% saponin. Cells were incubated in an antibody dilution of 5 ug/mL for 30 minutes at room temperature. Both antibodies were conjugated to Alexa Fluor 647.



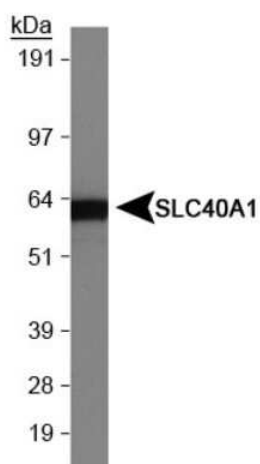
An intracellular stain was performed on Hek293 cells with TA309869 (blue) and a matched isotype control NBP2-24891 (orange). Cells were fixed with 4% PFA and then permeabilized with 0.1% saponin. Cells were incubated in an antibody dilution of 1.0 ug/mL for 30 minutes at room temperature, followed by Rabbit IgG (H+L) Cross-Adsorbed Secondary Antibody, Dylight 550 (SA5-10033, Thermo Fisher).



An intracellular stain was performed on HepG2 cells with Ferroportin/SLC40A1 Antibody TA309869 (blue) and a matched isotype control NBP2-24891 (orange). Cells were fixed with 4% PFA and then permeabilized with 0.1% saponin. Cells were incubated in an antibody dilution of 1.0 ug/mL for 30 minutes at room temperature, followed by Rabbit IgG (H+L) Cross-Adsorbed Secondary Antibody, DyLight 550 (SA5-10033, Thermo Fisher).



HepG2 cells were fixed and permeabilized for 10 minutes using -20C MeOH. The cells were incubated with Ferroportin/SLC40A1 Antibody at 5.0 ug/ml overnight at 4C and detected with an anti-rabbit DyLight 488 (green) at a 1:500 dilution. Alpha tubulin (DM1A) [NB100-690] was used as a co-stain at a 1:1000 dilution and detected with an anti-mouse DyLight 550 (red) at a 1:500 dilution. Nuclei were counterstained with DAPI (blue). Cells were imaged using a 40X objective.



Western blot of human intestine lysate (Molecular weight: 62.5 KDa) using Ferroportin/SLC40A1 Antibody.