

## Product datasheet for **TA309868**

### **COPT2 (SLC31A2) Rabbit Polyclonal Antibody**

#### **Product data:**

Product Type:	Primary Antibodies
Applications:	WB
Recommended Dilution:	Western Blot: 1 ug/ml, Simple Western: 10 ug/ml
Reactivity:	Human, Mouse
Host:	Rabbit
Clonality:	Polyclonal
Immunogen:	Synthetic peptide made to an internal portion of the human protein (within residues 50-100). [Swiss-Prot# O15432]
Formulation:	PBS, 30% Glycerol and 0.1% Sodium Azide
Concentration:	lot specific
Purification:	Peptide affinity purified
Conjugation:	Unconjugated
Storage:	Store at -20°C as received.
Stability:	Stable for 12 months from date of receipt.
Gene Name:	solute carrier family 31 member 2
Database Link:	<a href="#">NP_001851</a> <a href="#">Entrez Gene 20530 Mouse</a> <a href="#">Entrez Gene 1318 Human</a> <a href="#">O15432</a>
Synonyms:	COPT2; CTR2; hCTR2
Protein Families:	Transmembrane

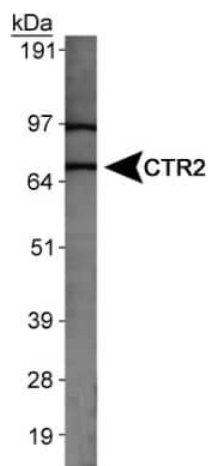


[View online »](#)

## Product images:



Simple Western: CTR2 Antibody TA309868 - Simple Western lane view shows a specific band for CTR2 in 0.5 mg/ml of MEF (left) and Human Placenta (right) lysate. This experiment was performed under reducing conditions using the 12-230 kDa separation system.



Western Blot: CTR2 Antibody TA309868 - Detection of CTR2 in MEF cell lysate.