

## Product datasheet for **TA309867**

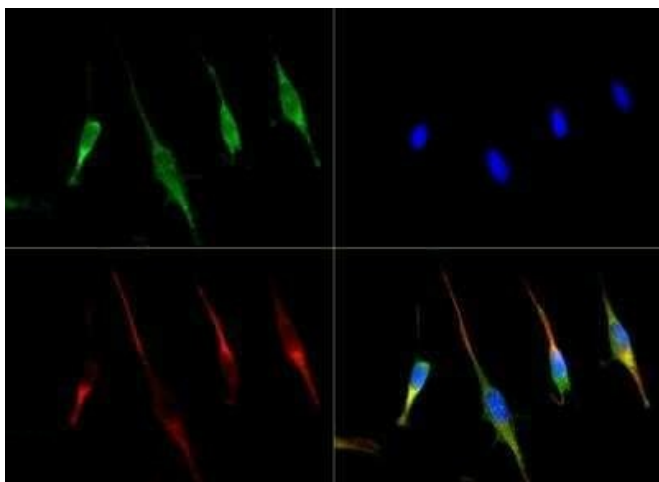
### SLC31A1 Rabbit Polyclonal Antibody

#### Product data:

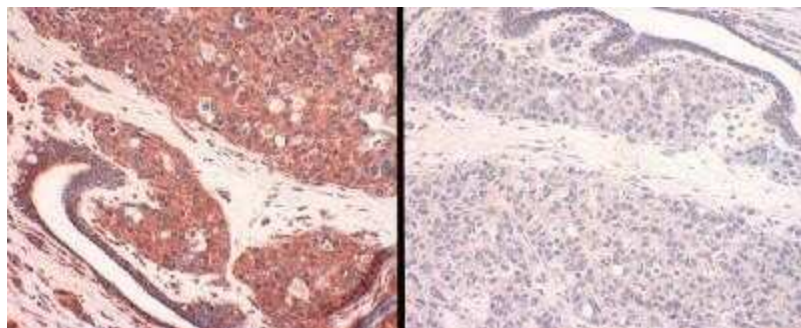
Product Type:	Primary Antibodies
Applications:	ICC/IF, IHC, WB
Recommended Dilution:	Immunohistochemistry: 1:250, Immunocytochemistry/ Immunofluorescence: 1:500, Western Blot, Immunohistochemistry-Paraffin: 1:250, Immunohistochemistry-Frozen
Reactivity:	Human, Mouse, Porcine, Rat, Xenopus, Zebrafish
Host:	Rabbit
Clonality:	Polyclonal
Immunogen:	A synthetic peptide derived from a C-terminal sequence of the human CTR1.
Formulation:	Tris-citrate/phosphate, pH 7-8 and 0.1% Sodium Azide
Concentration:	lot specific
Purification:	Affinity purified
Conjugation:	Unconjugated
Storage:	Store at -20°C as received.
Stability:	Stable for 12 months from date of receipt.
Gene Name:	solute carrier family 31 member 1
Database Link:	<a href="#">NP_001850</a> <a href="#">Entrez Gene 20529 MouseEntrez Gene 171135 RatEntrez Gene 1317 Human O15431</a>
Synonyms:	COPT1; CTR1
Protein Families:	Transmembrane



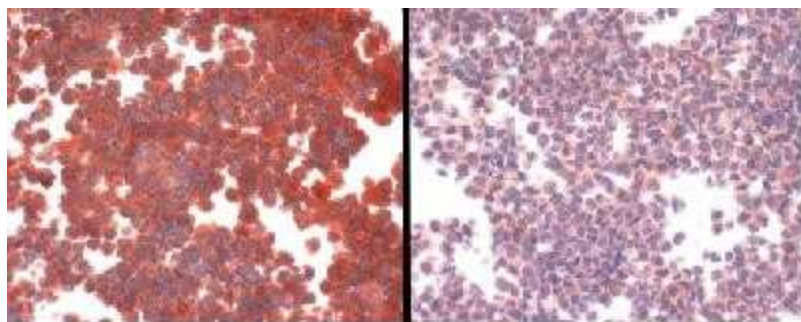
[View online »](#)

**Product images:**

Immunocytochemistry/Immunofluorescence: SLC31A1/CTR1 Antibody TA309867 - CTR1 antibody was tested in NIH-3T3 cells with DyLight 488 (green). Nuclei and alpha-tubulin were counterstained with DAPI (blue) and DyLight 550 (red).



Immunohistochemistry: SLC31A1/CTR1 Antibody TA309867 - Panel 1: human CTR1 staining of breast cancer tissue. Panel 2: human CTR1-antigen competition in breast cancer tissue.



Immunohistochemistry: SLC31A1/CTR1 Antibody TA309867 - Left panel: Antibody staining of hCTR1 overexpressing cell line. Right panel: Antibody plus peptide competition staining.