

Product datasheet for **TA309865**

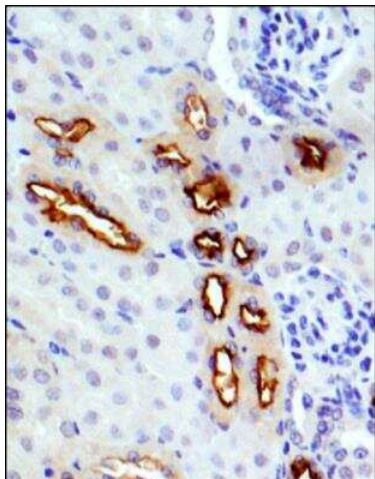
GLUT9 (SLC2A9) Rabbit Polyclonal Antibody

Product data:

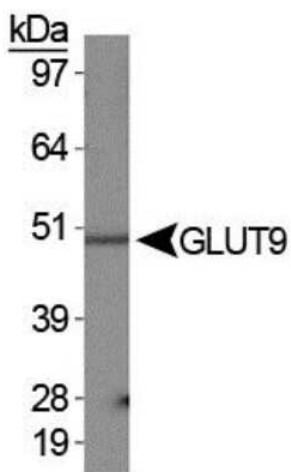
Product Type:	Primary Antibodies
Applications:	IHC, WB
Recommended Dilution:	Immunohistochemistry-Paraffin: 1:200 - 1:500, Western Blot: 0.5 ug/ml, Immunohistochemistry
Reactivity:	Human
Host:	Rabbit
Clonality:	Polyclonal
Immunogen:	Synthetic peptide made to an internal portion of the human protein (within residues 10-60). [Swiss-Prot# Q9NRM0]
Formulation:	Tris-glycine, 150mM NaCl and 0.05% Sodium Azide
Concentration:	lot specific
Purification:	Peptide affinity purified
Conjugation:	Unconjugated
Storage:	Store at -20°C as received.
Stability:	Stable for 12 months from date of receipt.
Gene Name:	solute carrier family 2 member 9
Database Link:	NP_064425 Entrez Gene 56606 Human Q9NRM0
Synonyms:	GLUT9; GLUTX; UAQTL2; URATV1
Protein Families:	Transmembrane



[View online »](#)

Product images:

Immunohistochemistry-Paraffin: GLUT9 Antibody TA309865 - IHC-P analysis mouse kidney section with GLUT9 antibody at 1:200 dilution. This antibody gave the expected staining of SLC2A9-L isoform in the tubular epithelial cells and the blood vessel endothelium.



Western Blot: GLUT9 Antibody TA309865 - Detection of GLUT9a in human kidney membrane prep.