

## Product datasheet for **TA309856**

### Shugoshin (SGO1) Rabbit Polyclonal Antibody

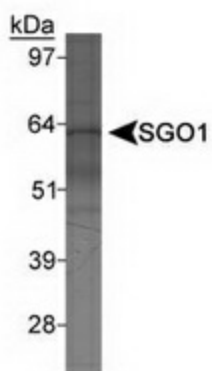
#### Product data:

Product Type:	Primary Antibodies
Applications:	WB
Recommended Dilution:	WB
Reactivity:	Human
Host:	Rabbit
Clonality:	Polyclonal
Immunogen:	Synthetic peptide made to an internal portion of the human protein (within residues 350-450). [Swiss-Prot# Q5FBB7]
Formulation:	Tris-citrate/phosphate, pH 7-8 and 0.1% Sodium Azide
Concentration:	lot specific
Purification:	Peptide affinity purified
Conjugation:	Unconjugated
Storage:	Store at -20°C as received.
Stability:	Stable for 12 months from date of receipt.
Gene Name:	shugoshin 1
Database Link:	<a href="#">NP_612493</a> <a href="#">Entrez Gene 151648 Human Q5FBB7</a>
Synonyms:	CAID; NY-BR-85; SGO; SGOL1
Protein Pathways:	Oocyte meiosis



[View online »](#)

## Product images:



Detection of SGO1 in HeLa nuclear extract using anti-SGO1.