

## Product datasheet for **TA309855**

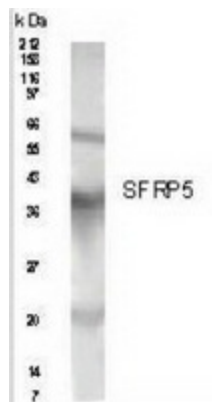
### SFRP5 Rabbit Polyclonal Antibody

#### Product data:

Product Type:	Primary Antibodies
Applications:	WB
Recommended Dilution:	WB, IHC, ICC, ELISA
Reactivity:	Human
Host:	Rabbit
Clonality:	Polyclonal
Immunogen:	n/a
Formulation:	PBS and 0.02% Sodium Azide
Concentration:	lot specific
Purification:	Immunogen affinity purified
Conjugation:	Unconjugated
Storage:	Store at -20°C as received.
Stability:	Stable for 12 months from date of receipt.
Gene Name:	secreted frizzled related protein 5
Database Link:	<a href="#">NP_003006</a> <a href="#">Entrez Gene 6425 Human</a> <a href="#">Q5T4F7</a>
Synonyms:	SARP3
Protein Families:	Adult stem cells, Druggable Genome, ES Cell Differentiation/IPS, Secreted Protein
Protein Pathways:	Wnt signaling pathway



[View online »](#)

**Product images:**

Western Blot: SFRP5 Antibody -Analysis of human SFRP5 in pancreas lysate with anti SFRP5 at a 1:500 dilution.