

Product datasheet for **TA309853**

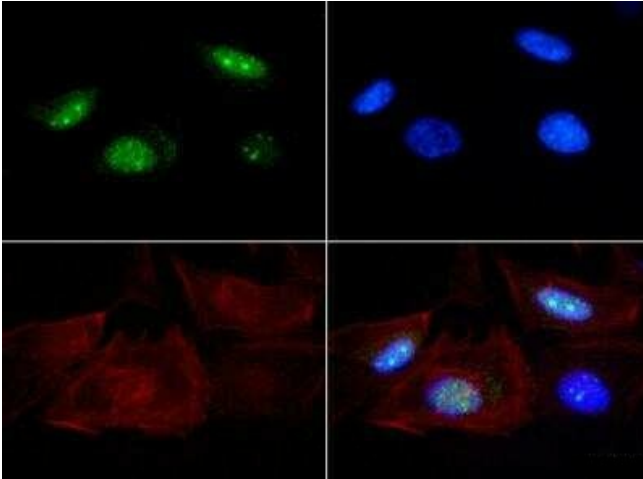
Senataxin (SETX) Rabbit Polyclonal Antibody

Product data:

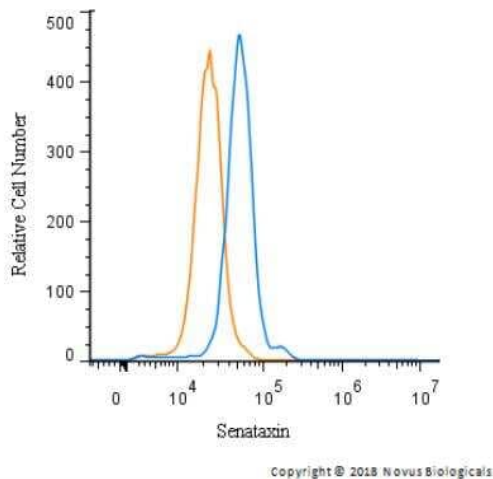
| | |
|-----------------------|---|
| Product Type: | Primary Antibodies |
| Applications: | FC, ICC/IF, IHC, IP, WB |
| Recommended Dilution: | Flow Cytometry: 1:10 - 1:1000, Immunocytochemistry/ Immunofluorescence: 1:100, Immunoprecipitation: 1:500, Western Blot: 1:500, Immunohistochemistry: 1:200 - 1:500, Immunohistochemistry-Paraffin: 1:200 - 1:500 |
| Reactivity: | Human |
| Host: | Rabbit |
| Clonality: | Polyclonal |
| Immunogen: | A genomic peptide made to an internal portion of the human Senataxin protein (between residues 600-750) [UniProt Q7Z333] |
| Formulation: | PBS, 30% glycerol and 0.05% Sodium Azide |
| Purification: | Affinity purified |
| Conjugation: | Unconjugated |
| Storage: | Store at -20°C as received. |
| Stability: | Stable for 12 months from date of receipt. |
| Gene Name: | senataxin |
| Database Link: | NP_055861 Entrez Gene 23064 Human Q7Z333 |
| Synonyms: | ALS4; AOA2; bA479K20.2; SCAR1 |



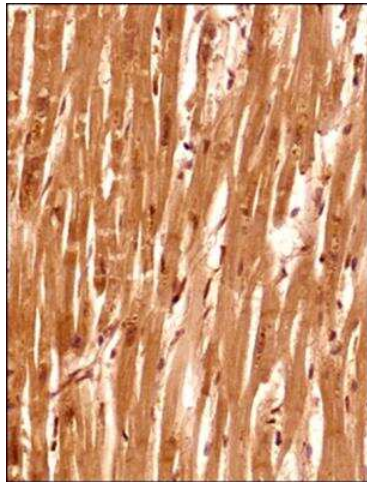
[View online »](#)

Product images:

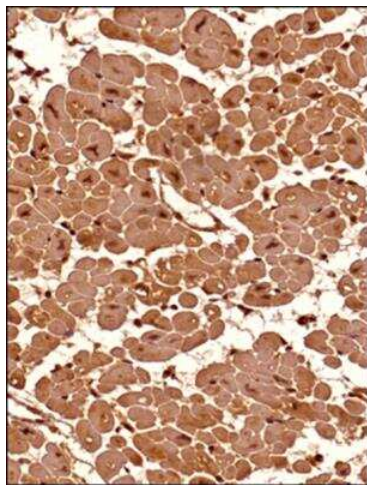
Immunocytochemistry/Immunofluorescence: Senataxin Antibody TA309853 - Senataxin antibody was tested at 1:100 in HeLa cells with FITC (green). Nuclei and actin were counterstained with DAPI (blue) and Phalloidin (red).



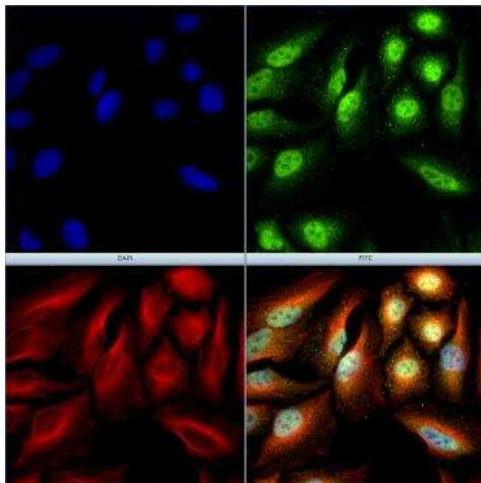
Flow Cytometry: Senataxin Antibody TA309853 - An intracellular stain was performed on Jurkat cells and a matched isotype control (orange). Cells were fixed with 4% PFA and then permeabilized with 0.1% saponin. Cells were incubated in an antibody dilution of 2.5 ug/mL for 30 minutes at room temperature, followed by Rabbit IgG (H+L) Cross-Adsorbed Secondary Antibody, .



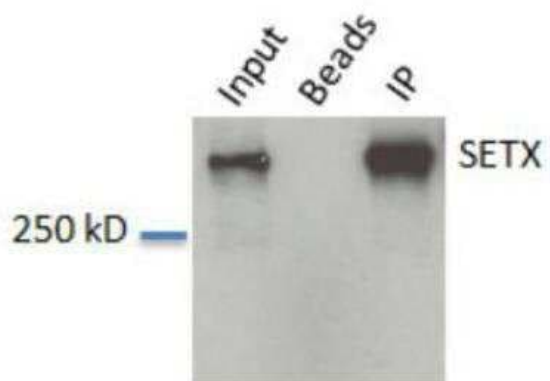
Immunohistochemistry-Paraffin: Senataxin Antibody TA309853 - Analysis of a FFPE tissue section of human heart (verticle section) using 1:200 dilution of lot A2 of Senataxin antibody. The antibody generated a very strong staining in the cytoplasm and the nuclei of the muscle cells. No signal was found in the perimysium and endomysium (connective tissue) of the section.



Immunohistochemistry-Paraffin: Senataxin Antibody TA309853 - Analysis of a FFPE tissue section of human heart (transverse section) using 1:200 dilution of lot A2 of Senataxin antibody. The antibody generated a very strong staining in the cytoplasm and the nuclei of the muscle cells. No signal was found in the perimysium and endomysium area (connective tissue) of the section.



Immunocytochemistry/Immunofluorescence: Senataxin Antibody TA309853 - HeLa cells were fixed for 10 minutes using 10% formalin and then permeabilized for 5 minutes using 1X PBS + 0.5% Triton-X100. The cells were incubated with anti-Senataxin at 2 ug/ml overnight at 4C and detected with an anti-rabbit Dylight 488 (Green) at a 1:500 dilution. Alpha tubulin (DM1A) NB100-690 was used as a co-stain at a 1:1000 dilution and detected with an anti-mouse Dylight 550 (Red) at a 1:500 dilution. Nuclei were counterstained with DAPI (Blue). Cells were imaged using a 40X objective.



Western Blot: Senataxin Antibody TA309853 -
Input: HeLa whole cell lysate. Beads without
antibody IP control. IP: IP from HeLa lysate.