

Product datasheet for **TA309852**

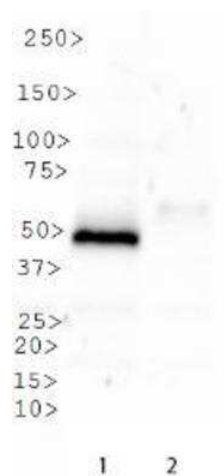
KMT5A Rabbit Polyclonal Antibody

Product data:

Product Type:	Primary Antibodies
Applications:	IF, IHC, WB
Recommended Dilution:	Western Blot: 1:1000, Immunohistochemistry (Negative), ICC/IF (Negative)
Reactivity:	Human
Host:	Rabbit
Clonality:	Polyclonal
Immunogen:	A synthetic peptide made to an internal portion of the human SETD8 protein (between residues 120-200) [UniProt Q9NQR1]
Formulation:	PBS, 30% glycerol and 0.05% Sodium Azide
Purification:	Affinity purified
Conjugation:	Unconjugated
Storage:	Store at -20°C as received.
Stability:	Stable for 12 months from date of receipt.
Gene Name:	lysine methyltransferase 5A
Database Link:	NP_065115 Entrez Gene 387893 Human Q9NQR1
Synonyms:	PR-Set7; SET07; SET8; SETD8
Protein Families:	Druggable Genome
Protein Pathways:	Lysine degradation



[View online »](#)

Product images:

Western Blot: SETD8 Antibody TA309852 -
Western blot analysis of SETD8 in Lane 1. SETD8
overexpression vector containing C-terminal DDK
tag. Lane 2. Empty vector.