

Product datasheet for **TA309851**

MASPIN (SERPINB5) Rabbit Polyclonal Antibody

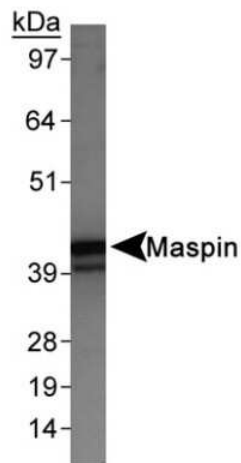
Product data:

Product Type:	Primary Antibodies
Applications:	IF, WB
Recommended Dilution:	Western Blot: 0.5 ug/ml, ICC/IF (Negative), Knockdown Validated
Reactivity:	Human
Host:	Rabbit
Clonality:	Polyclonal
Immunogen:	Synthetic peptide made to an internal portion of the human protein (within residues 100-200). [Swiss-Prot# P36952]
Formulation:	PBS, 30% glycerol and 0.1% Sodium Azide
Concentration:	lot specific
Purification:	Peptide affinity purified
Conjugation:	Unconjugated
Storage:	Store at -20°C as received.
Stability:	Stable for 12 months from date of receipt.
Gene Name:	serpin family B member 5
Database Link:	AAH20713 Entrez Gene 5268 Human P36952
Synonyms:	maspin
Protein Families:	Druggable Genome, Secreted Protein
Protein Pathways:	p53 signaling pathway

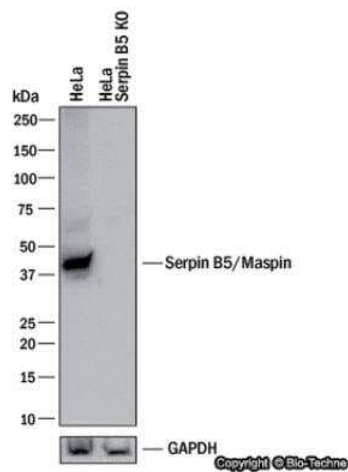


[View online »](#)

Product images:



Western Blot: MASPIN Antibody TA309851 - Detection of Maspin in HeLa whole cell extracts using TA309851.



Knockdown Validated: Serpin B5/Maspin Antibody TA309851 - Western blot shows lysates of HeLa human cervical epithelial carcinoma parental cell line and MASPIN/Serpin B5 knockout (KO) HeLa cell line. PVDF membrane was probed with 0.5 ug/ml of Rabbit Anti-Human MASPIN/Serpin B5 Polyclonal Antibody (Catalog # TA309851) followed by HRP-conjugated Anti-Rabbit IgG Secondary Antibody (Catalog #HAF008). Specific band was detected for MASPIN/Serpin B5 at approximately 40 kDa (as indicated) in the parental HeLa cell line, but is not detectable in the knockout HeLa cell line. This experiment was conducted under reducing conditions.