

Product datasheet for **TA309850**

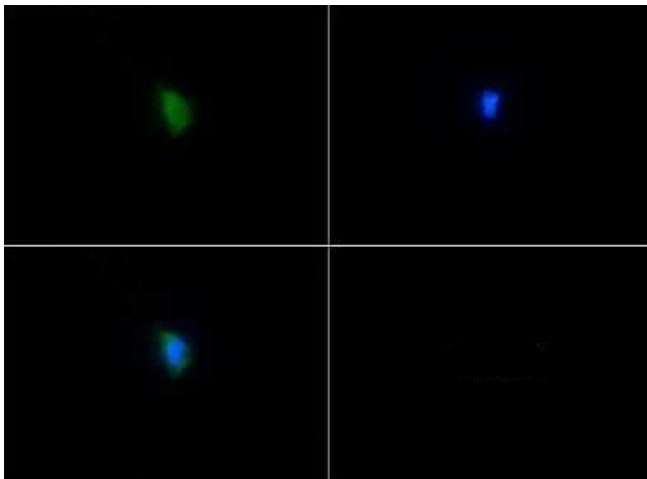
SERF2 Rabbit Polyclonal Antibody

Product data:

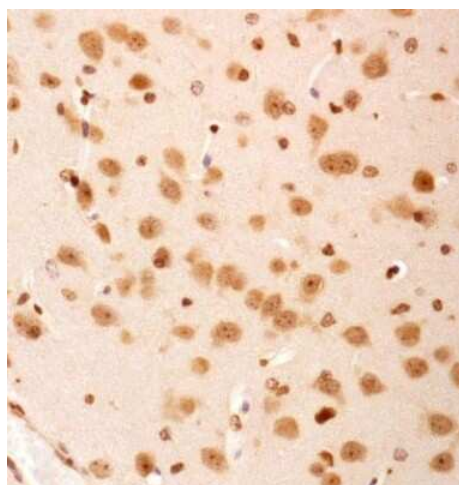
Product Type:	Primary Antibodies
Applications:	ICC/IF, IHC, WB
Recommended Dilution:	Immunocytochemistry/ Immunofluorescence: 1:75, Western Blot: 1:1000, Immunohistochemistry-Paraffin: 1:300, Immunohistochemistry: 1:300
Reactivity:	Human, Mouse
Host:	Rabbit
Clonality:	Polyclonal
Immunogen:	A synthetic peptide made to an N-terminal portion of the human SERF2 protein (between residues 1-50) [UniProt P84101]
Formulation:	PBS, 30% glycerol and 0.05% Sodium Azide
Concentration:	lot specific
Purification:	Affinity purified
Conjugation:	Unconjugated
Storage:	Store at -20°C as received.
Stability:	Stable for 12 months from date of receipt.
Gene Name:	small EDRK-rich factor 2
Database Link:	Entrez Gene 378702 Mouse Entrez Gene 10169 Human P84101
Synonyms:	4F5REL; FAM2C; H4F5REL; HsT17089



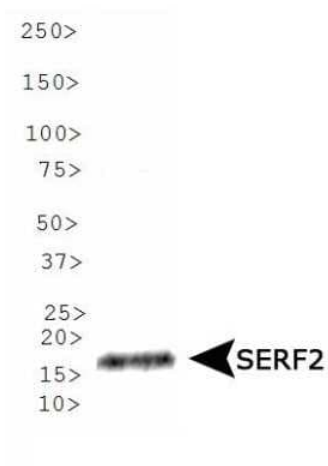
[View online »](#)

Product images:

Immunocytochemistry/Immunofluorescence:
SERF2 Antibody TA309850 - Staining of SERF2
antibody tested in HUVEC cells with FITC (green).
Nuclei were counterstained with Dapi (blue).



Immunohistochemistry: SERF2 Antibody
TA309850 - IHC staining of SERF2 in mouse brain
using DAB with hematoxylin counterstain.



Western Blot: SERF2 Antibody TA309850 -
Analysis of SERF2 in SERF2 overexpression lysate.