

Product datasheet for **TA309849**

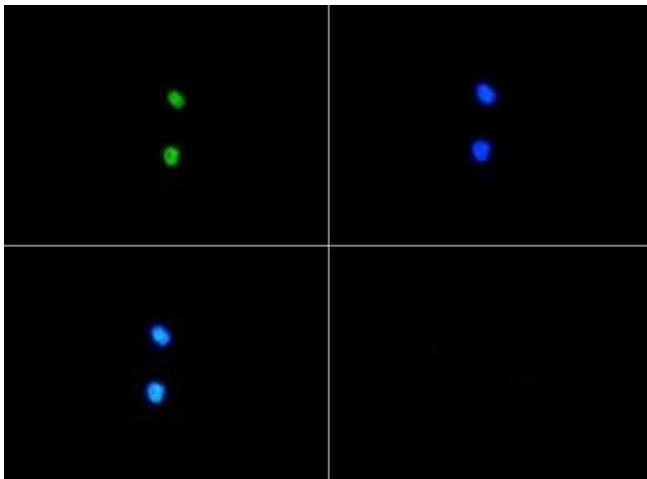
Small EDRK rich factor 1 (SERF1A) Rabbit Polyclonal Antibody

Product data:

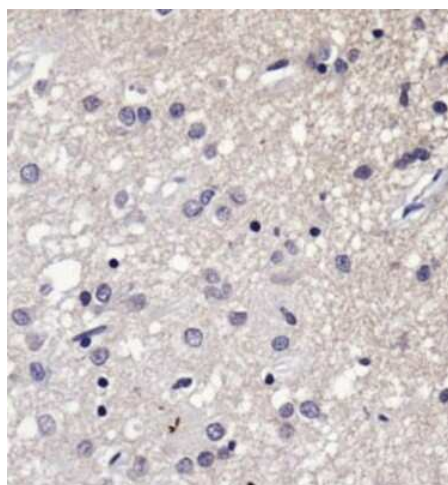
Product Type:	Primary Antibodies
Applications:	ICC/IF, IHC
Recommended Dilution:	Immunohistochemistry-Paraffin: 1:400, Immunohistochemistry: 1:400, Immunocytochemistry/ Immunofluorescence: 1:100
Reactivity:	Human
Host:	Rabbit
Clonality:	Polyclonal
Immunogen:	A synthetic peptide made to an internal portion of the human SERF1A protein (between residues 50-100) [UniProt O75920]
Formulation:	PBS, 30% glycerol and 0.05% Sodium Azide
Concentration:	lot specific
Purification:	Affinity purified
Conjugation:	Unconjugated
Storage:	Store at -20°C as received.
Stability:	Stable for 12 months from date of receipt.
Gene Name:	small EDRK-rich factor 1A (telomeric)
Database Link:	NP_068802 Entrez Gene 8293 Human O75920
Synonyms:	4F5; FAM2A; H4F5; SERF1; SMAM1
Protein Families:	Transmembrane



[View online »](#)

Product images:

Immunocytochemistry/Immunofluorescence: SERF1A Antibody TA309849 - Serf1a antibody was tested in Ntera cells with FITC (green). Nuclei were counterstained with DAPI (blue).



Immunohistochemistry: SERF1A Antibody TA309849 - Analysis of SERF1A in human Alzheimer's brain using DAB with hematoxylin counterstain.