

Product datasheet for **TA309848**

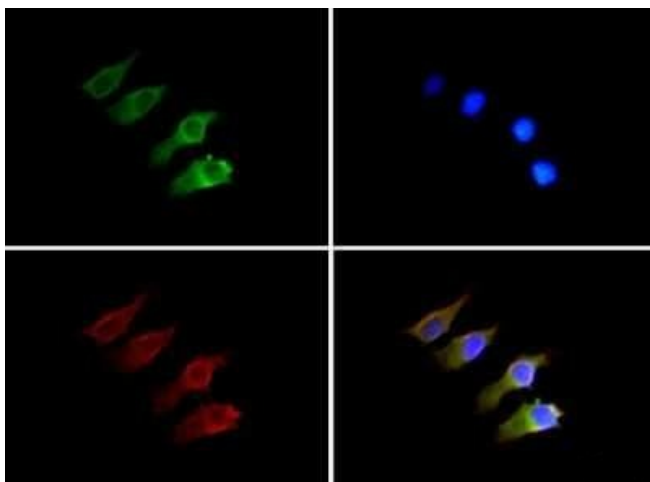
Semaphorin 3B (SEMA3B) Rabbit Polyclonal Antibody

Product data:

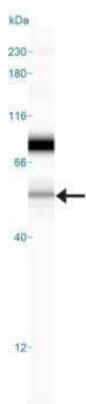
Product Type:	Primary Antibodies
Applications:	ICC/IF, IHC, Simple Western, WB
Recommended Dilution:	Western Blot: 1:500-1:2000, Immunohistochemistry: 1:100 - 1:200, Immunohistochemistry-Paraffin: 1:100 - 1:200, Immunocytochemistry/ Immunofluorescence: 1:40, Simple Western: 1:25
Reactivity:	Bovine, Canine, Human, Mouse, Rat
Host:	Rabbit
Clonality:	Polyclonal
Immunogen:	A synthetic peptide made to an internal portion of the human SEMA 3B protein sequence (between residues 100-200).
Formulation:	Tris-glycine, 150mM NaCl and 0.05% Sodium Azide
Concentration:	lot specific
Purification:	Affinity purified
Conjugation:	Unconjugated
Storage:	Store at -20°C as received.
Stability:	Stable for 12 months from date of receipt.
Gene Name:	semaphorin 3B
Database Link:	NP_004627 Entrez Gene 20347 Mouse Entrez Gene 363142 Rat Entrez Gene 7869 Human Q13214
Synonyms:	LUCA-1; SemA; SEMA5; SEMAA; semaV
Protein Families:	Secreted Protein, Transmembrane
Protein Pathways:	Axon guidance



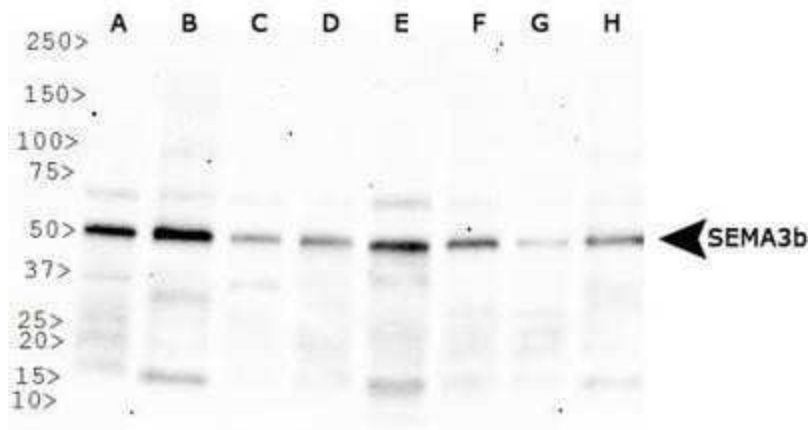
[View online »](#)

Product images:


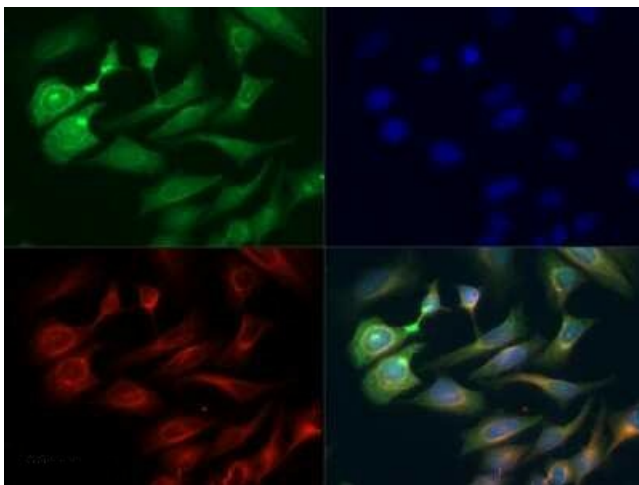
Immunocytochemistry/Immunofluorescence: Semaphorin 3B Antibody TA309848 - SEMA3B antibody was tested in Neuro-2a cells with Dylight 488 (green). Nuclei and alpha-tubulin were counterstained with DAPI (blue) and Dylight 550 (red).



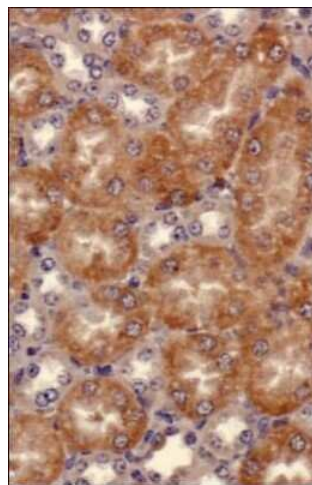
Simple Western: Semaphorin 3B Antibody TA309848 - Simple Western lane view shows a specific band for SEMA3B in 1.0 mg/ml of HeLa lysate. This experiment was performed under reducing conditions using the 12-230 kDa separation system.



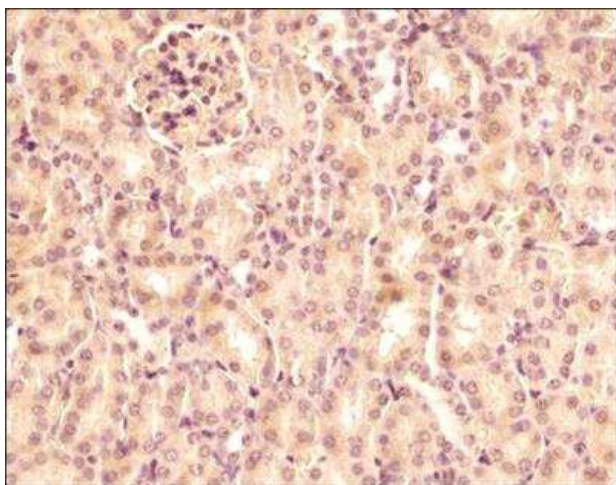
Western Blot: Semaphorin 3B Antibody TA309848 - Western blot analysis of SEMA3B in A. HeLa WCE B. Ntera2 C. A431 D. HepG2 E. MCF7 F. NIH/3T3 G. PC12 H. Cos7



Immunocytochemistry/Immunofluorescence: Semaphorin 3B Antibody TA309848 - SEMA3B antibody (1:50) was tested in HeLa cells with Dylight 488 (green). Nuclei and alpha-tubulin were counterstained with DAPI (blue) and Dylight 550 (red). Image objective 40x.



Immunohistochemistry: Semaphorin 3B Antibody TA309848 - IHC analysis of SEMA3B in mouse kidney using DAB with hematoxylin counterstain.



Immunohistochemistry-Paraffin: Semaphorin 3B Antibody TA309848 - IHC analysis of a formalin fixed paraffin embedded tissue section of mouse kidney using 1:200 dilution of rabbit anti-Semaphorin 3B antibody. This antibody generated a weak to moderate cytoplasmic staining in the cells of various renal tubules and glomeruli.