

## Product datasheet for **TA309846**

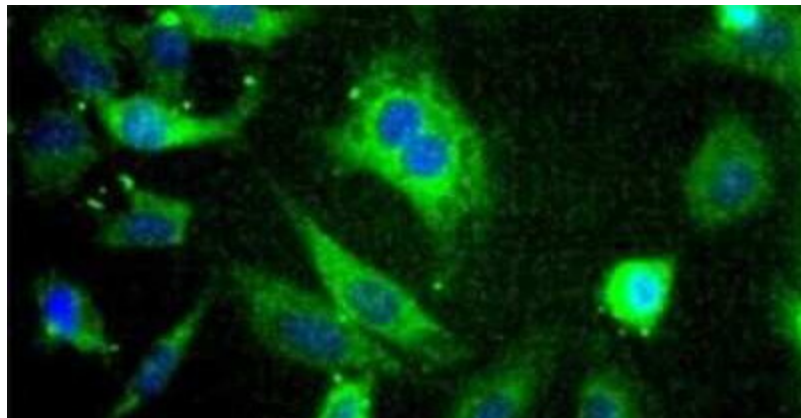
### SCD1 (SCD) Rabbit Polyclonal Antibody

#### Product data:

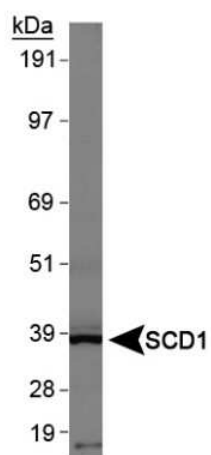
Product Type:	Primary Antibodies
Applications:	ICC/IF, WB
Recommended Dilution:	Western Blot: 2 ug/ml, Immunocytochemistry/ Immunofluorescence: 1:50
Reactivity:	Human
Host:	Rabbit
Clonality:	Polyclonal
Immunogen:	Synthetic peptide made to an internal portion of the human protein (within residues 50-100). [Swiss-Prot# O00767]
Formulation:	PBS, 30% glycerol and 0.1% Sodium Azide
Concentration:	lot specific
Purification:	Peptide affinity purified
Conjugation:	Unconjugated
Storage:	Store at -20°C as received.
Stability:	Stable for 12 months from date of receipt.
Gene Name:	stearoyl-CoA desaturase
Database Link:	<a href="#">NP_005054</a> <a href="#">Entrez Gene 6319 Human</a> <a href="#">O00767</a>
Synonyms:	FADS5; hSCD1; MSTP008; SCD1; SCDOS
Protein Families:	Transmembrane
Protein Pathways:	Biosynthesis of unsaturated fatty acids, PPAR signaling pathway



[View online »](#)

**Product images:**

Immunocytochemistry/Immunofluorescence:  
SCD Antibody TA309846 - SCD staining in HeLa cells detected with a Dylight 488 labeled secondary antibody (Green) with Hoechst 33258 nuclear counterstain (Blue).



Western Blot: SCD Antibody TA309846 - Normal human liver.