

## Product datasheet for **TA309844**

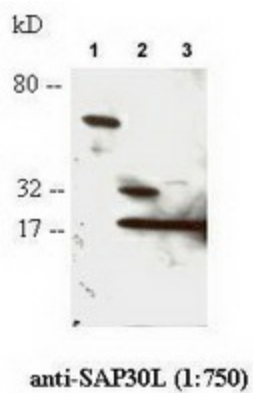
### SAP30L Rabbit Polyclonal Antibody

#### Product data:

Product Type:	Primary Antibodies
Applications:	WB
Recommended Dilution:	WB
Reactivity:	Human
Host:	Rabbit
Clonality:	Polyclonal
Immunogen:	A synthetic peptide made to residues 165-183 (VKS <sub>N</sub> KSRLDQKSEGGKQLE) of human SAP30L.
Formulation:	PBS with 0.02% Sodium Azide
Concentration:	lot specific
Purification:	Immunogen affinity purified
Conjugation:	Unconjugated
Storage:	Store at -20°C as received.
Stability:	Stable for 12 months from date of receipt.
Gene Name:	SAP30-like
Database Link:	<a href="#">NP_078908</a> <a href="#">Entrez Gene 79685 Human</a> <a href="#">Q9HAJ7</a>
Synonyms:	NS4ATP2



[View online »](#)

**Product images:**

Lane 1: Detects GST-hSAP30L fusion protein in NIH3T3 cells. Lane 2: Detects wild-type transfected hSAP30L and endogenous hSAP30L in HEK293 cells. Lane 3: Detects endogenous hSAP30L in non-transfected MCF-7 cells.