

Product datasheet for **TA309840**

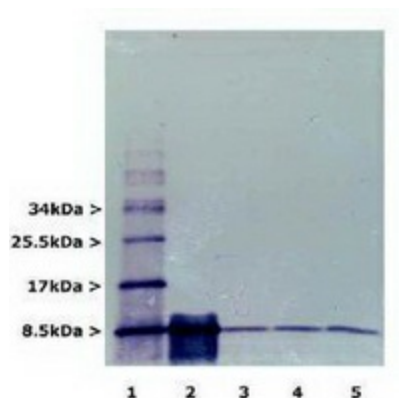
RPS27A Mouse Monoclonal Antibody [Clone ID: Ubi-1]

Product data:

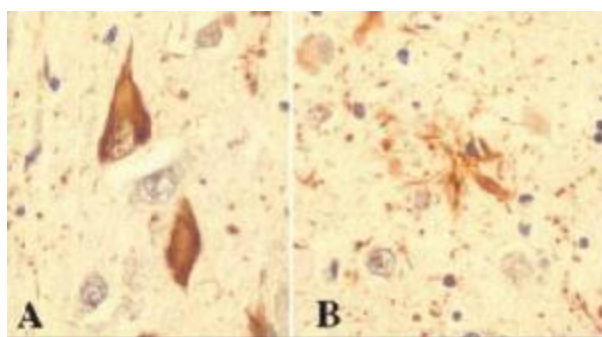
Product Type:	Primary Antibodies
Clone Name:	Ubi-1
Applications:	IHC, WB
Recommended Dilution:	WB, IF, IHC, ELISA
Reactivity:	Bovine, C. elegans, Chicken, Drosophila, Human, Mouse, Plant
Host:	Mouse
Isotype:	IgG1, kappa
Clonality:	Monoclonal
Immunogen:	Purified ubiquitin conjugated to keyhole limpet hemocyanin with glutaraldehyde
Formulation:	10mM Sodium Azide
Purification:	Ascites
Conjugation:	Unconjugated
Storage:	Store at -20°C as received.
Stability:	Stable for 12 months from date of receipt.
Gene Name:	ribosomal protein S27a
Database Link:	NP_002945 Entrez Gene 78294 Mouse Entrez Gene 6233 Human P62979
Synonyms:	CEP80; HEL112; S27A; UBA80; UBC; UBCEP1; UBCEP80
Protein Families:	Druggable Genome
Protein Pathways:	Ribosome



[View online »](#)

Product images:

Western Blot: Ubiquitin Antibody (Ubi-1) - Staining of ubiquitin using anti-Ubiquitin. Lane 1 is mono-ubiquitin and polyubiquitin chains. Lane 2 is monoubiquitin only (overloaded). Lanes 3, 4 and 5 are 0.1 mg rat cerebellum, cortex, and brain stem respectively. 20% gels with PVDF blots (Nitrocellulose works but not as well).



Immunohistochemistry: Ubiquitin Antibody (Ubi-1) - Immunohistochemical staining of Ubiquitin in hippocampal tissue from an Alzheimer patient, using anti-Ubiquitin.