

Product datasheet for **TA309838**

RNase L (RNASEL) Mouse Monoclonal Antibody

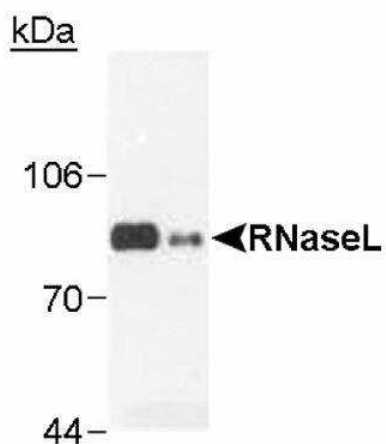
Product data:

Product Type:	Primary Antibodies
Applications:	ELISA, IHC, WB
Recommended Dilution:	Knockout Validated, Western Blot: 1:1000-1:4000 (ECL), Immunohistochemistry-Paraffin: 1:200-1:1000, ELISA: 1:100-1:2000, Immunohistochemistry: 1:200-1:1000
Reactivity:	Human, Primate
Host:	Mouse
Isotype:	IgG1, kappa
Clonality:	Monoclonal
Immunogen:	Purified full-length recombinant human RNaseL produced in insect cells.
Formulation:	PBS and 0.1% Sodium Azide
Concentration:	lot specific
Purification:	Protein G purified
Conjugation:	Unconjugated
Storage:	Store at -20°C as received.
Stability:	Stable for 12 months from date of receipt.
Gene Name:	ribonuclease L
Database Link:	NP_066956 Entrez Gene 6041 Human Q05823
Synonyms:	PRCA1; RNS4
Protein Families:	Druggable Genome, Protein Kinase



[View online »](#)

Product images:



Western Blot: RNase L Antibody (2E9) TA309838 - RNaseL in insect cell extracts transfected with recombinant human RNase L (0.1 ug) and Hey1B (100 ug)



Immunohistochemistry: RNase L Antibody (2E9) TA309838 - RNase L antibody was tested in human colon using DAB with hematoxylin counterstain.