

## Product datasheet for **TA309836**

### Resistin (RETN) Rabbit Polyclonal Antibody

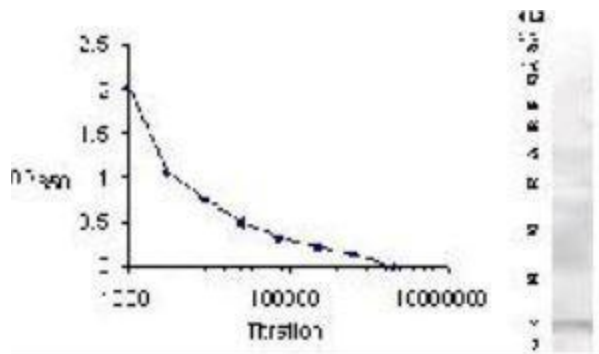
#### Product data:

Product Type:	Primary Antibodies
Applications:	WB
Recommended Dilution:	WB, FC, IF, IHC, IP
Reactivity:	Human
Host:	Rabbit
Isotype:	IgG
Clonality:	Polyclonal
Immunogen:	Reacts with residues 79-90 [GSWDVRAETTCH] of the human Resistin protein.
Formulation:	PBS and 0.02% Sodium Azide
Concentration:	lot specific
Purification:	IgG purified
Conjugation:	Unconjugated
Storage:	Store at -20°C as received.
Stability:	Stable for 12 months from date of receipt.
Gene Name:	resistin
Database Link:	<a href="#">NP_065148</a> <a href="#">Entrez Gene 56729 Human</a> <a href="#">Q9HD89</a>
Synonyms:	ADSF; FIZZ3; RETN1; RSTN; XCP1
Protein Families:	Druggable Genome, Secreted Protein



[View online »](#)

Product images:



Western Blot: Resistin Antibody at a dilution of 1:500-1:1000.