

Product datasheet for **TA309830**

Retinoblastoma binding protein 6 (RBBP6) Rabbit Polyclonal Antibody

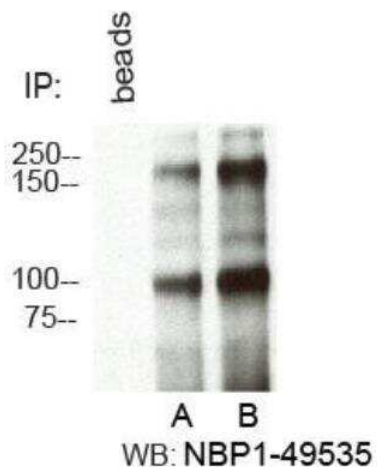
Product data:

Product Type:	Primary Antibodies
Applications:	ICC/IF, IHC, IP, WB
Recommended Dilution:	Immunohistochemistry, Immunoprecipitation: 1:10-1:500, Western Blot: 1:1000, Immunohistochemistry-Paraffin: 1:400, Knockdown Validated, Immunocytochemistry/Immunofluorescence
Reactivity:	Human, Mouse
Host:	Rabbit
Clonality:	Polyclonal
Immunogen:	A synthetic peptide made to an internal portion of the human RBBP6 protein (between residues 1600-1650) [UniProt Q7Z6E9]
Formulation:	PBS, 30% glycerol and 0.05% Sodium Azide
Concentration:	lot specific
Purification:	Affinity purified
Conjugation:	Unconjugated
Storage:	Store at -20°C as received.
Stability:	Stable for 12 months from date of receipt.
Gene Name:	RB binding protein 6, ubiquitin ligase
Database Link:	NP_008841 Entrez Gene 19647 Mouse Entrez Gene 5930 Human Q7Z6E9
Synonyms:	MY038; P2P-R; PACT; RBQ-1; SNAMA
Protein Families:	Druggable Genome

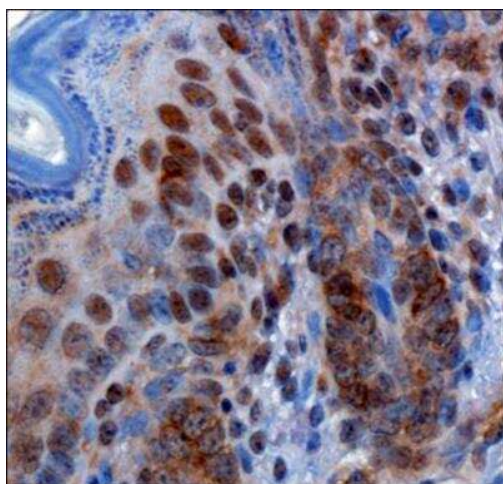


[View online »](#)

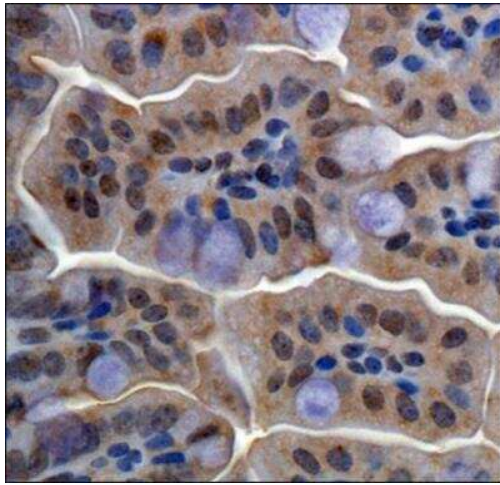
Product images:



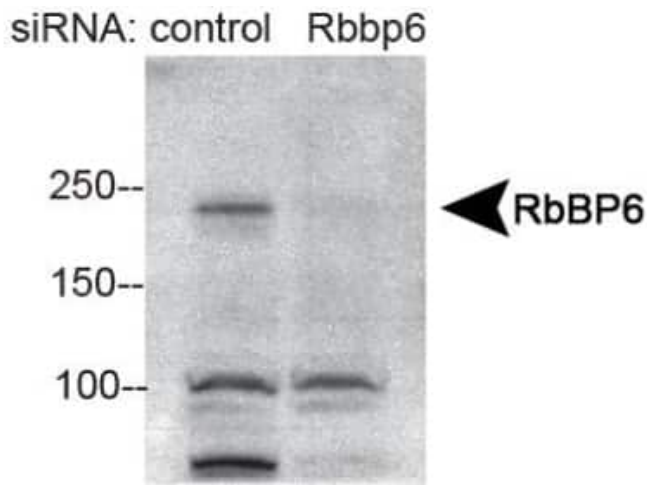
Immunoprecipitation: RBBP6 Antibody TA309830 - Immunoprecipitation of RbBP6 from HeLa cells using A. NBP1-49542 and B. TA309830.



Immunohistochemistry-Paraffin: RBBP6 Antibody TA309830 - IHC analysis of formalin-fixed paraffin-embedded tissue section from skin of normal mouse with 1:400 dilution of RBBP6 antibody. The keratinocytes and other epidermal cells developed nuclear and cytoplasmic immunostaining with this antibody.



Immunohistochemistry-Paraffin: RBBP6 Antibody TA309830 - IHC analysis of formalin-fixed paraffin-embedded tissue section from intestine of normal mouse with 1:400 dilution of RBBP6 antibody. The intestinal epithelial cells depicted a nuclear and cytoplasmic immunostaining pattern with this antibody.



Western Blot: RBBP6 Antibody TA309830 - Analysis of RbBP6 in HeLa nuclear extracts.