

## Product datasheet for **TA309820**

### PRMT2 Rabbit Polyclonal Antibody

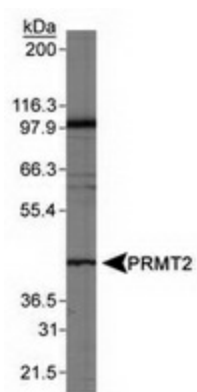
#### Product data:

Product Type:	Primary Antibodies
Applications:	WB
Recommended Dilution:	WB
Reactivity:	Bovine, Human, Primate
Host:	Rabbit
Clonality:	Polyclonal
Immunogen:	Synthetic peptide made to an internal portion of the human protein (within residues 380-433). [Swiss-Prot# P55345]
Formulation:	Tris-citrate/phosphate, pH 7-8 and 0.1% Sodium Azide
Concentration:	lot specific
Purification:	Peptide affinity purified
Conjugation:	Unconjugated
Storage:	Store at -20°C as received.
Stability:	Stable for 12 months from date of receipt.
Gene Name:	protein arginine methyltransferase 2
Database Link:	<a href="#">NP_001526</a> <a href="#">Entrez Gene 3275 Human</a> <a href="#">P55345</a>
Synonyms:	HRMT1L1
Protein Families:	Druggable Genome



[View online »](#)

## Product images:



Detection of PRMT2 in Jurkat whole cell lysates using anti-PRMT2.