

Product datasheet for **TA309819**

PRDM1 Mouse Monoclonal Antibody [Clone ID: 3H2-E8]

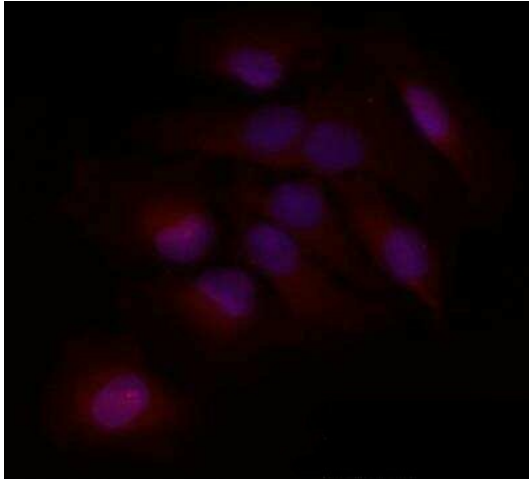
Product data:

Product Type:	Primary Antibodies
Clone Name:	3H2-E8
Applications:	ELISA, FC, ICC/IF, IHC, IP, WB
Recommended Dilution:	Flow Cytometry: 8 ug/ml where cells are used at 2×10^6 /mL, ELISA: 1:100-1:2000, Immunohistochemistry: 1:200, Immunocytochemistry/ Immunofluorescence: 1:50-1:200, Immunoprecipitation, Western Blot: 1:1000, Immunohistochemistry-Paraffin: 1:200, Chromatin Immunoprecipitation (ChIP): 1ug antibody/ 10 ug protein, Immunohistochemistry-Frozen
Reactivity:	Human, Mouse, Porcine
Host:	Mouse
Isotype:	IgG1
Clonality:	Monoclonal
Immunogen:	A fragment of the mouse Blimp-1 (residues 199-409).
Formulation:	Tris-glycine, 150mM NaCl pH 7.5 and 0.1% Sodium Azide
Concentration:	lot specific
Purification:	Protein G purified
Conjugation:	Unconjugated
Storage:	Store at -20°C as received.
Stability:	Stable for 12 months from date of receipt.
Gene Name:	PR domain 1
Database Link:	NP_001189 Entrez Gene 12142 Mouse Entrez Gene 639 Human O75626
Synonyms:	BLIMP1; PRDI-BF1
Protein Families:	Transcription Factors

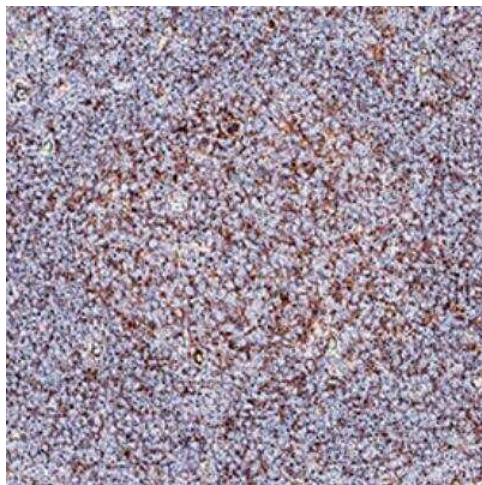


[View online »](#)

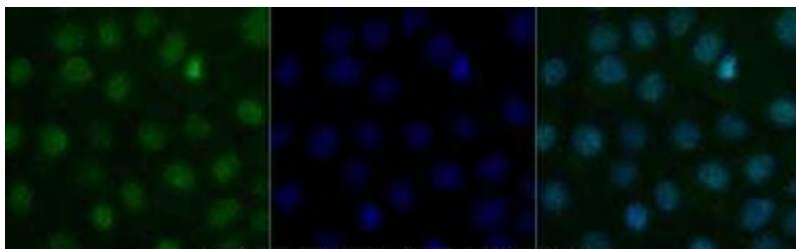
Product images:



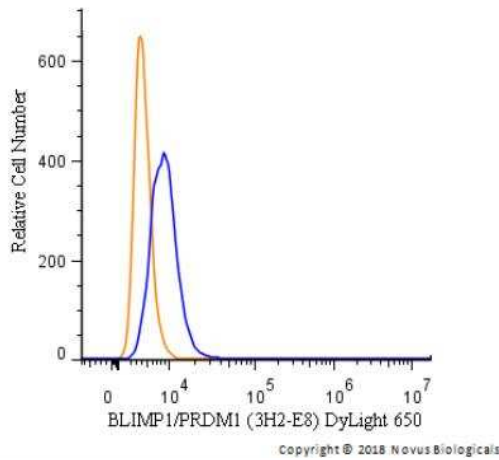
Immunocytochemistry/Immunofluorescence: BLIMP1/PRDM1 Antibody (3H2-E8) TA309819 - HeLa cells were fixed for 10 minutes using 10% formalin and then permeabilized for 5 minutes using 1X PBS + 0.05% Triton-X100. The cells were incubated with anti-BLIMP1/PRDM1 (3H2-E8) conjugated to DyLight 550 [TA309819R] at 20ug/ml for 1 hour at room temperature. Nuclei were counterstained with DAPI (Blue). Cells were imaged using a 40X objective.



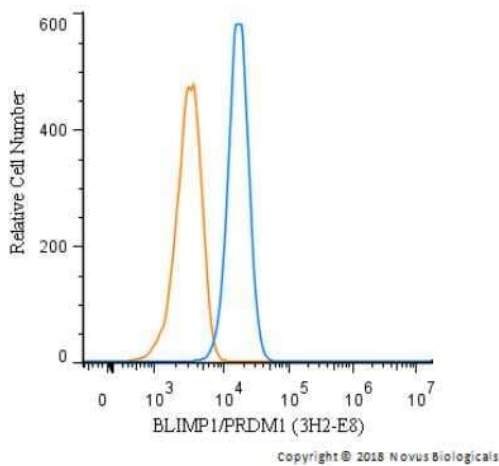
Immunohistochemistry-Paraffin: BLIMP1/PRDM1 Antibody (3H2-E8) TA309819 - Analysis using paraffin-embedded human tonsil tissue with BLIMP1/PRDM1 antibody at dilution of 1:50. Detection is completed through VC001 (DAB) and Counterstained by hematoxylin; labeling is predominantly in germinal centers. Images may not be copied, printed or otherwise disseminated without express written permission of Novus Biologicals a bio-technne brand.



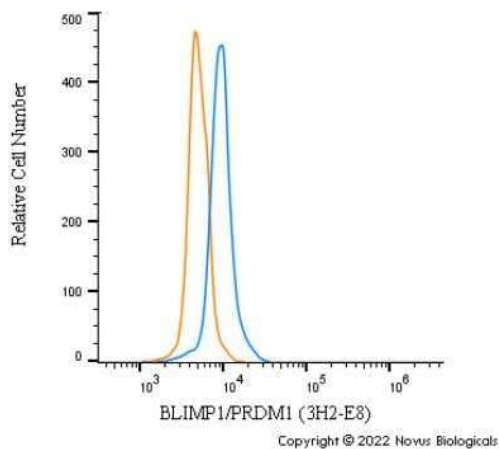
Immunocytochemistry/Immunofluorescence: BLIMP1/PRDM1 Antibody (3H2-E8) TA309819 - A431 cells were fixed for 10 minutes using 10% formalin and then permeabilized for 5 minutes using 1X PBS + 0.5% Triton-X100. The cells were incubated with anti-BLIMP1 (3H2-E8) at 10 ug/ml overnight at 4C and detected with an anti-mouse IgG DyLight 488 (Green) at a 1:500 dilution. Nuclei were counterstained with DAPI (Blue). Cells were imaged using a 40X objective.



Flow Cytometry: BLIMP1/PRDM1 Antibody (3H2-E8) TA309819 - An intracellular stain was performed on A431 cells with BLIMP1/PRDM1 [3H2-E8] Antibody [TA309819C] (blue) and a matched isotype control (orange). Cells were fixed with 4% PFA and then permeabilized with 0.1% saponin. Cells were incubated in an antibody dilution of 5 ug/mL for 30 minutes at room temperature. Both antibodies were conjugated to DyLight 650.



Flow Cytometry: BLIMP1/PRDM1 Antibody (3H2-E8) TA309819 - An intracellular stain was performed on U266 cells with BLIMP1/PRDM1 Antibody (3H2-E8) TA309819 (blue) and a matched isotype control (orange). Cells were fixed with 4% PFA and permeabilized with 0.1% Saponin. Cells were incubated in an antibody dilution of 2.5 ug/mL for 30 minutes at room temperature, followed by mouse F(ab)2 IgG (H+L) APC-conjugated secondary antibody (F0101B, R&D Systems).



Flow Cytometry: BLIMP1/PRDM1 Antibody (3H2-E8) - BSA Free TA309819 - An intracellular stain was performed on A431 cells with BLIMP1/PRDM1 Antibody (3H2-E8) TA309819 (blue) and a matched isotype control MAB002 (orange). Cells were fixed with 4% PFA and then permeabilized with 0.1% saponin. Cells were incubated in an antibody dilution of 2.5 ug/mL for 30 minutes at room temperature, followed by Mouse IgG (H+L) Cross-Adsorbed Secondary Antibody, Dylight 550 (84540, Thermo Fisher).