

Product datasheet for **TA309814**

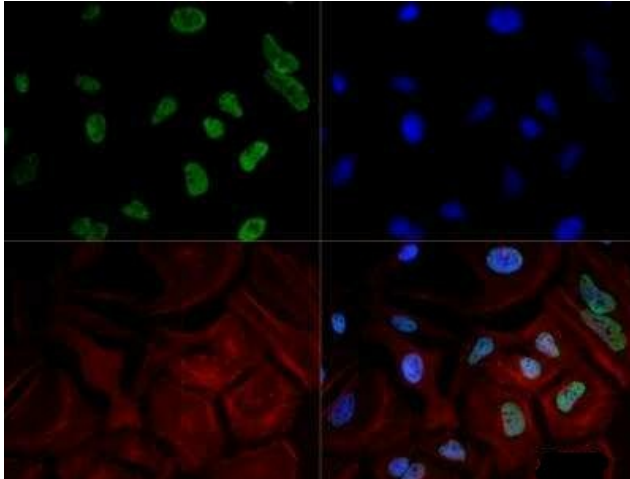
POLR2A Mouse Monoclonal Antibody [Clone ID: 4H8]

Product data:

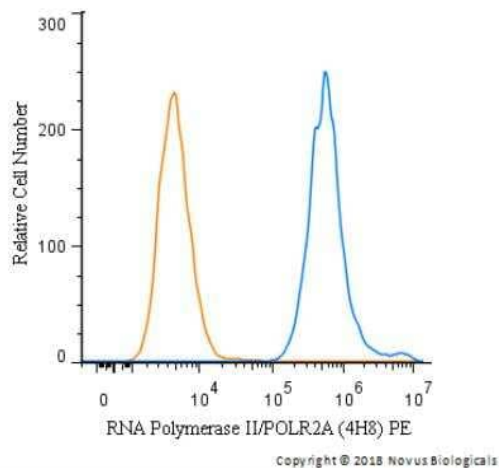
Product Type:	Primary Antibodies
Clone Name:	4H8
Applications:	ChIP, CyTOF-ready, ELISA, FC, ICC/IF, IP, WB
Recommended Dilution:	Western Blot: 1-2 ug/ml, ELISA: 1:100-1:2000, Immunocytochemistry/ Immunofluorescence: 1:100-1:1000, Immunoprecipitation: 1:10-1:500, Chromatin Immunoprecipitation (ChIP): 1:10-1:500, Flow Cytometry: 1 ug per million cells, Flow (Intracellular), CyTOF-ready
Reactivity:	Human, Mouse, Yeast
Host:	Mouse
Isotype:	IgG1
Clonality:	Monoclonal
Immunogen:	10 repeats of synthetic peptide YSPTSPS using chemically synthesized phospho-ser 5 YSPTSpPS (Human).
Formulation:	PBS
Concentration:	lot specific
Purification:	IgG purified
Conjugation:	Unconjugated
Storage:	Store at -20°C as received.
Stability:	Stable for 12 months from date of receipt.
Gene Name:	polymerase (RNA) II subunit A
Database Link:	NP_000928 Entrez Gene 20020 Mouse Entrez Gene 5430 Human P24928
Synonyms:	hRPB220; hsRPB1; POLR2; POLRA; RPB1; RPBh1; RpIILS; RPO2; RPOL2
Protein Pathways:	Huntington's disease, Metabolic pathways, Purine metabolism, Pyrimidine metabolism, RNA polymerase



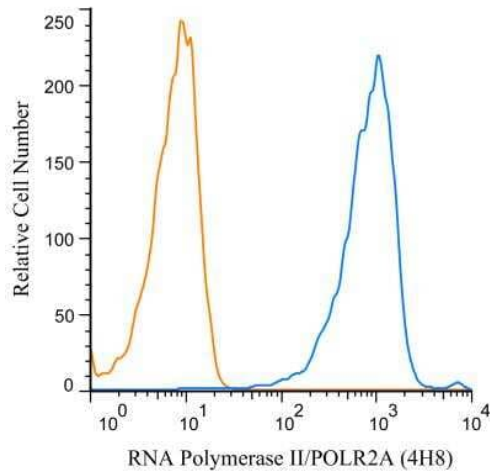
[View online »](#)

Product images:

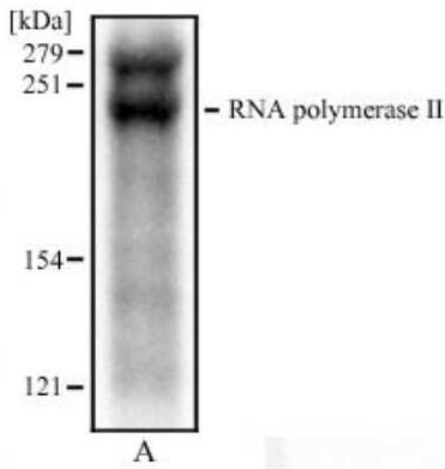
Immunocytochemistry/Immunofluorescence: RNA Polymerase II/POLR2A Antibody (4H8) TA309814 - RNA Polymerase II/POLR2A antibody was tested in HeLa cells with DyLight 488 (green). Nuclei and alpha-tubulin were counterstained with DAPI (blue) and DyLight 550 (red).



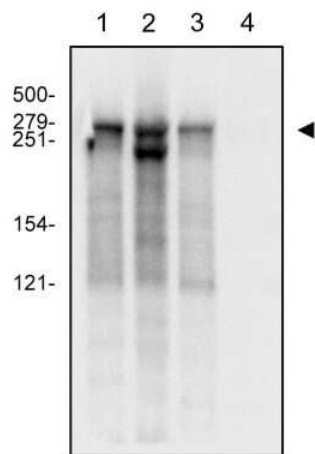
Flow Cytometry: RNA Polymerase II/POLR2A Antibody (4H8) TA309814 - An intracellular stain was performed on HeLa cells with RNA Polymerase II/POLR2A (4H8) antibody TA309814PE (blue) and a matched isotype control (orange). Cells were fixed with 4% PFA and then permeabilized with 0.1% saponin. Cells were incubated in an antibody dilution of 2.5 ug/mL for 30 minutes. Both antibodies were conjugated to phycoerythrin.



Flow (Intracellular): RNA Polymerase II/POLR2A Antibody (4H8) TA309814 - An intracellular stain was performed on Daudi cells with RNA Polymerase II/POLR2A (4H8) antibody TA309814 (blue) and a matched isotype control NBP2-27287 (orange). Cells were fixed with 4% PFA and then permeablized with 0.1% saponin. Cells were incubated in an antibody dilution of 1 ug/mL for 30 minutes, followed by mouse F(ab)₂ IgG (H+L) APC-conjugated secondary antibody (F0101B, R&D Systems).



Western Blot: RNA Polymerase II/POLR2A Antibody (4H8) TA309814 - Analysis of MCF7 cell lysata (A) using RNA polymerase II antibody at 2 ug/mL.



Western Blot: RNA Polymerase II/POLR2A Antibody (4H8) TA309814 - Whole cell protein from HeLa (lane 1), MCF7 (lane 2), NIH-3T3 (lane 3) and Cos7 (lane 4) were separated by SDS-PAGE on a 6% gel, transferred to PVDF and probed with 2 ug/mL TA309814. RNA Pol II reactivity (arrowhead) is observed in HeLa, MCF and 3T3 cells.