

Product datasheet for **TA309812**

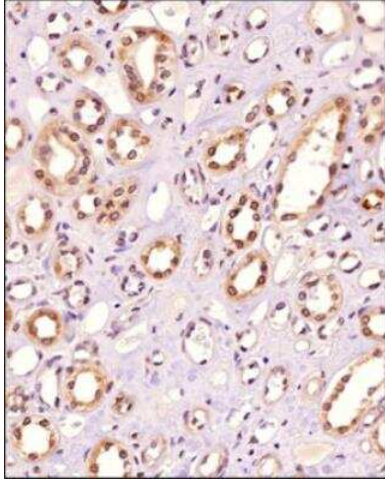
DNA Polymerase epsilon (POLE3) Mouse Monoclonal Antibody [Clone ID: 3C5.1]

Product data:

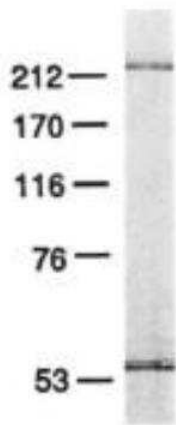
Product Type:	Primary Antibodies
Clone Name:	3C5.1
Applications:	IHC, IP, WB
Recommended Dilution:	Immunohistochemistry-Paraffin: 1:200, Immunohistochemistry, Western Blot: 5 ug/ml, Immunoprecipitation: 1:10-1:500
Reactivity:	Drosophila, Human, Mouse, Primate
Host:	Mouse
Isotype:	IgG2a
Clonality:	Monoclonal
Immunogen:	Mono S FPLC column purified HeLa cell pol epsilon.
Formulation:	PBS
Concentration:	lot specific
Purification:	Protein G purified
Conjugation:	Unconjugated
Storage:	Store at -20°C as received.
Stability:	Stable for 12 months from date of receipt.
Gene Name:	polymerase (DNA) epsilon 3, accessory subunit
Database Link:	NP_059139 Entrez Gene 59001 Mouse Entrez Gene 54107 Human Q9NRF9
Synonyms:	CHARAC17; CHRAC17; p17; YBL1
Protein Pathways:	Base excision repair, DNA replication, Metabolic pathways, Nucleotide excision repair, Purine metabolism, Pyrimidine metabolism



[View online »](#)

Product images:

Immunohistochemistry-Paraffin: DNA Polymerase epsilon catalytic subunit A Antibody (3C5.1) TA309812 - Analysis of a FFPE tissue section of human kidney using 1:200 dilution of DNA Polymerase epsilon catalytic subunit A [3C5.1] antibody. The staining was developed using HRP labeled anti-rabbit secondary antibody and DAB reagent, and nuclei of cells were counter-stained with hematoxylin.



Western Blot: DNA Polymerase epsilon catalytic subunit A Antibody (3C5.1) TA309812 - SDS-polyacrylamide gel analysis of HeLa DNA pol purified by Mono S FPLC. The Mono S fraction (0.1 mg) was electrophoresed on a 7% SDS-polyacrylamide gel and stained with silver.