

Product datasheet for **TA309811**

PODXL Rabbit Polyclonal Antibody

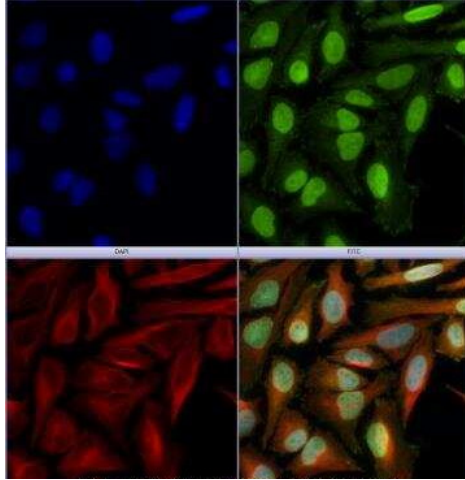
Product data:

Product Type:	Primary Antibodies
Applications:	ICC/IF, WB
Recommended Dilution:	Western Blot: 2 ug/ml, Immunocytochemistry/ Immunofluorescence: 1:1000
Reactivity:	Human
Host:	Rabbit
Clonality:	Polyclonal
Immunogen:	A synthetic peptide within an internal region (residues 100-200) of the human Podocalyxin protein. [Swiss-Prot# O00592] This immunogen should be far enough away from any glycosylation site.
Formulation:	Tris-glycine, 150mM NaCl and 0.05% Sodium Azide
Concentration:	lot specific
Purification:	Immunogen affinity purified
Conjugation:	Unconjugated
Storage:	Store at -20°C as received.
Stability:	Stable for 12 months from date of receipt.
Gene Name:	podocalyxin like
Database Link:	NP_005388 Entrez Gene 5420 Human O00592
Synonyms:	Gp200; PC; PCLP; PCLP-1
Protein Families:	Transmembrane

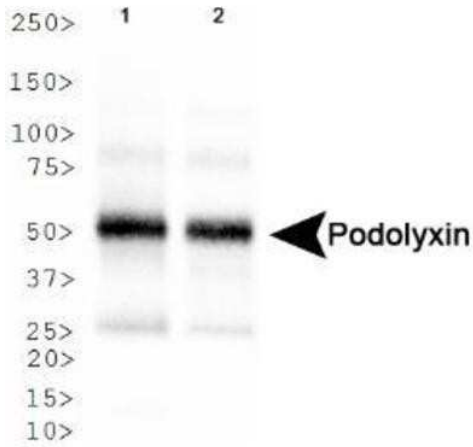


[View online »](#)

Product images:



Immunocytochemistry/Immunofluorescence: Podocalyxin Like Antibody TA309811 - HeLa cells were fixed for 10 minutes using 10% formalin and then permeabilized for 5 minutes using 1X PBS + 0.05% Triton-X100. The cells were incubated with anti-Podocalyxin Like Antibody at 2 ug/ml overnight at 4C and detected with an anti-rabbit Dylight 488 (Green) at a 1:500 dilution. Alpha tubulin (DM1A) NB100-690 was used as a co-stain at a 1:1000 dilution and detected with an anti-mouse Dylight 550 (Red) at a 1:500 dilution. Nuclei were counterstained with DAPI (Blue). Cells were imaged using a 40X objective.



Western Blot: Podocalyxin Like Antibody TA309811 - Analysis of Podolyxin in 1. Human thymus and 2. Human lymph node.