

Product datasheet for **TA309808**

LSDP5 (PLIN5) Rabbit Polyclonal Antibody

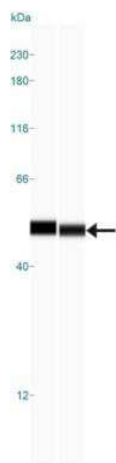
Product data:

Product Type:	Primary Antibodies
Applications:	WB
Recommended Dilution:	Simple Western: 10 ug/ml, Western Blot: 0.5-2 ug/ml
Reactivity:	Human, Mouse
Host:	Rabbit
Clonality:	Polyclonal
Immunogen:	A synthetic peptide made to a C-terminal region of the mouse OXPAT protein, within residues 400-463. [Uniprot# Q8BVZ1]
Formulation:	PBS + 30% glycerol and 0.1% Sodium Azide
Concentration:	lot specific
Purification:	Peptide affinity purified
Conjugation:	Unconjugated
Storage:	Store at -20°C as received.
Stability:	Stable for 12 months from date of receipt.
Gene Name:	perilipin 5
Database Link:	NP_001013728 Entrez Gene 66968 Mouse Entrez Gene 440503 Human Q00G26
Synonyms:	LSDA5; LSDP5; MLDP; OXPAT

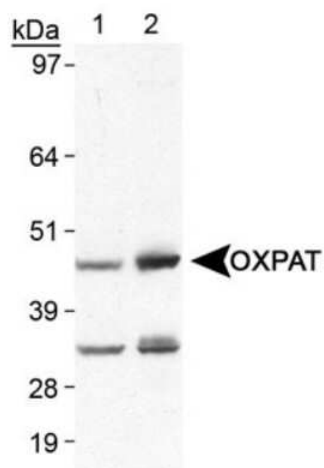


[View online »](#)

Product images:



Simple Western: OXPAT Antibody TA309808 - Simple Western lane view shows a specific band for OXPAT in 0.5 mg/ml of Human Heart (left) and Mouse Heart (right) lysate. This experiment was performed under reducing conditions using the 12-230 kDa separation system.



Western Blot: OXPAT Antibody TA309808 - Detection of OXPAT in human (lane 1) and mouse (lane 2) heart lysate.