

Product datasheet for **TA309806**

Perilipin-1 (PLIN1) Rabbit Polyclonal Antibody

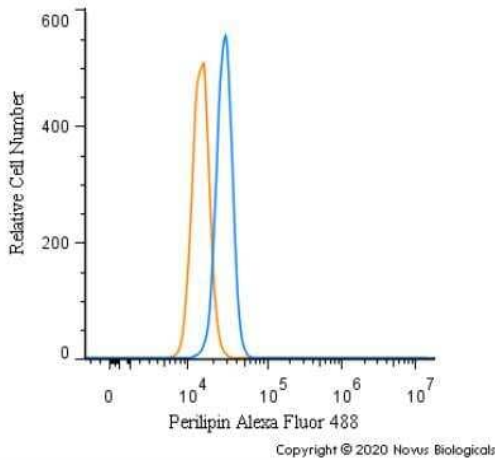
Product data:

Product Type:	Primary Antibodies
Applications:	FC, ICC/IF, IHC, WB
Recommended Dilution:	Imaging Mass Cytometry, Western Blot: 2 ug/mL, Flow Cytometry: 5 - 10 ug/mL, Immunohistochemistry-Paraffin: 1:200, Immunohistochemistry: 1:200, Immunocytochemistry/ Immunofluorescence
Reactivity:	Bovine, Human, Mouse, Porcine, Rat, Sheep
Host:	Rabbit
Clonality:	Polyclonal
Immunogen:	A synthetic peptide made to a region between residues 450-522 (C-terminus) of the human perilipin protein. [Swiss-Prot# O60240]
Formulation:	Tris-glycine, 150mM NaCl and 0.05% Sodium Azide
Concentration:	lot specific
Purification:	Peptide affinity purified
Conjugation:	Unconjugated
Storage:	Store at -20°C as received.
Stability:	Stable for 12 months from date of receipt.
Gene Name:	perilipin 1
Database Link:	NP_001138783 Entrez Gene 25629 Rat Entrez Gene 103968 Mouse Entrez Gene 5346 Human O60240
Synonyms:	FPLD4; PERI; PLIN
Protein Families:	Druggable Genome
Protein Pathways:	PPAR signaling pathway

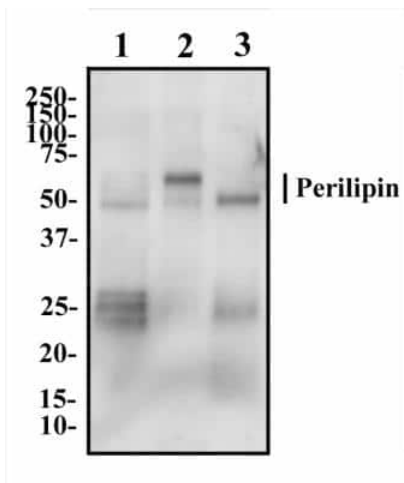


[View online »](#)

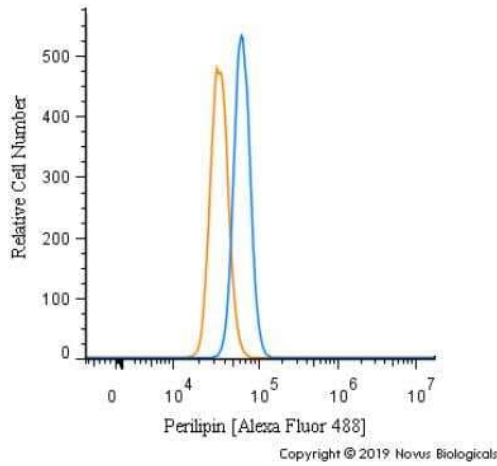
Product images:



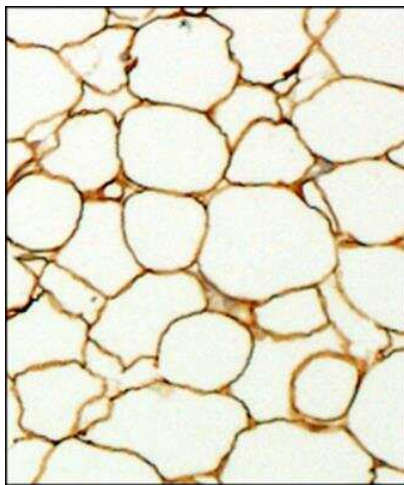
Flow Cytometry: Perilipin Antibody TA309806 - An intracellular stain was performed on U2OS cells with Perilipin Antibody TA309806AF488 (blue) and a matched isotype control (orange). Cells were fixed with 4% PFA and then permeabilized with 0.1% saponin. Cells were incubated in an antibody dilution of 5 ug/mL for 30 minutes at room temperature. Both antibodies were conjugated to Alexa Fluor 488.



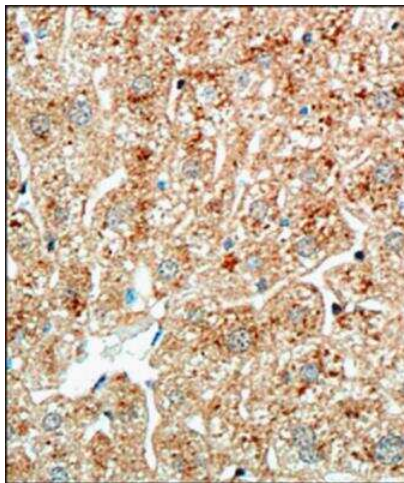
Western Blot: Perilipin Antibody TA309806 - Total protein from Human breast (lane 1), Human adipose membrane fraction (lane 2) and Human adipose tissue (lane 3) were separated on a 12% gel by SDS-PAGE. Protein was transferred to PVDF membrane, probed with 2 ug/mL anti-perilipin antibody followed by anti-rabbit HRP conjugated secondary antibody and detected with chemiluminescence.



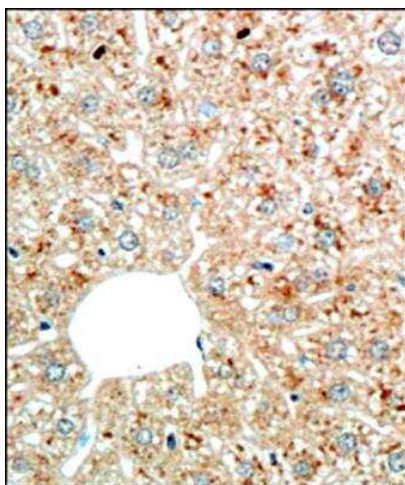
Flow Cytometry: Perilipin Antibody TA309806 - An intracellular stain was performed on MCF7 cells with Perilipin Antibody TA309806AF488 (blue) and a matched isotype control (orange). Cells were fixed with 4% PFA and then permeabilized with 0.1% saponin. Cells were incubated in an antibody dilution of 10 ug/mL for 30 minutes at room temperature. Both antibodies were conjugated to Alexa Fluor 488.



Immunohistochemistry-Paraffin: Perilipin Antibody TA309806 - IHC analysis of formalin fixed paraffin embedded section of fat tissue from mouse with Perilipin antibody at 1:200 dilution. The antibody generated an expected staining in the adipocytes towards periphery of the cells.



Immunohistochemistry-Paraffin: Perilipin Antibody TA309806 - IHC analysis of formalin fixed paraffin embedded section of liver tissue from mouse with Perilipin antibody at 1:200 dilution. The hepatocytes developed specific staining in the cytoplasm and around the nuclei of some cells, the immunostaining reflected a punctate appearance which is potentially the ER of the cells.



Immunohistochemistry-Paraffin: Perilipin Antibody TA309806 - IHC analysis of formalin fixed paraffin embedded section of liver tissue from mouse with Perilipin antibody at 1:200 dilution. The hepatocytes developed specific staining in the cytoplasm and around the nuclei of some cells, the immunostaining reflected a punctate appearance which is potentially the ER of the cells.