

## Product datasheet for **TA309799**

### Profilin 1 (PFN1) Rabbit Polyclonal Antibody

#### Product data:

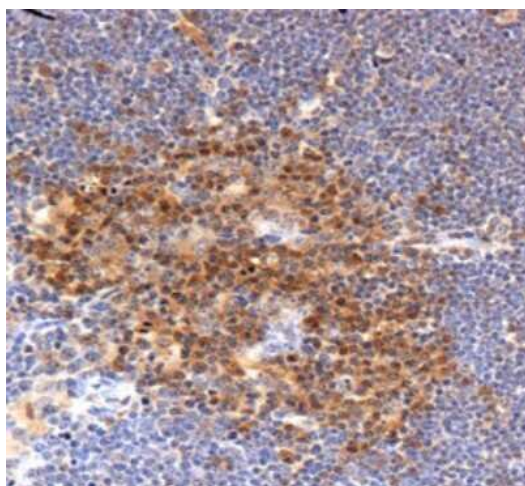
Product Type:	Primary Antibodies
Applications:	IHC, Simple Western, WB
Recommended Dilution:	Immunohistochemistry: 1:100, Western Blot: 0.5 ug/ml, Immunohistochemistry-Paraffin: 1:100, Simple Western: 1:200
Reactivity:	Bovine, Human, Mouse, Rat
Host:	Rabbit
Clonality:	Polyclonal
Immunogen:	Synthetic peptide made to a C-terminal portion of the human protein (within residues 100-140). [Swiss-Prot# P07737]
Formulation:	PBS, 30% glycerol and 0.1% Sodium Azide
Concentration:	lot specific
Purification:	Peptide affinity purified
Conjugation:	Unconjugated
Storage:	Store at -20°C as received.
Stability:	Stable for 12 months from date of receipt.
Gene Name:	profilin 1
Database Link:	<a href="#">NP_005013</a> <a href="#">Entrez Gene 18643 Mouse</a> <a href="#">Entrez Gene 64303 Rat</a> <a href="#">Entrez Gene 5216 Human</a> <a href="#">P07737</a>
Synonyms:	ALS18
Protein Families:	Druggable Genome, Stem cell - Pluripotency
Protein Pathways:	Regulation of actin cytoskeleton



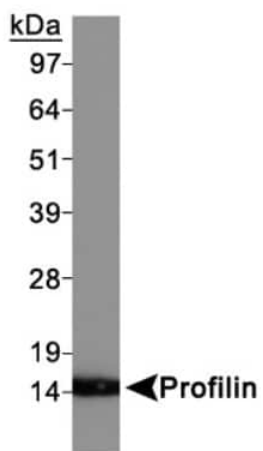
[View online »](#)

**Product images:**

Simple Western: Profilin 1 Antibody TA309799 - Simple Western lane view shows a specific band for Profilin 1 in 0.5 mg/ml of HeLa lysate. This experiment was performed under reducing conditions using the 12-230 kDa separation system.



Immunohistochemistry: Profilin 1 Antibody TA309799 - Staining of Profilin in mouse thymus.



Western Blot: Profilin 1 Antibody TA309799 -  
Western Blot on HeLa whole cell extracts.