

## Product datasheet for **TA309794**

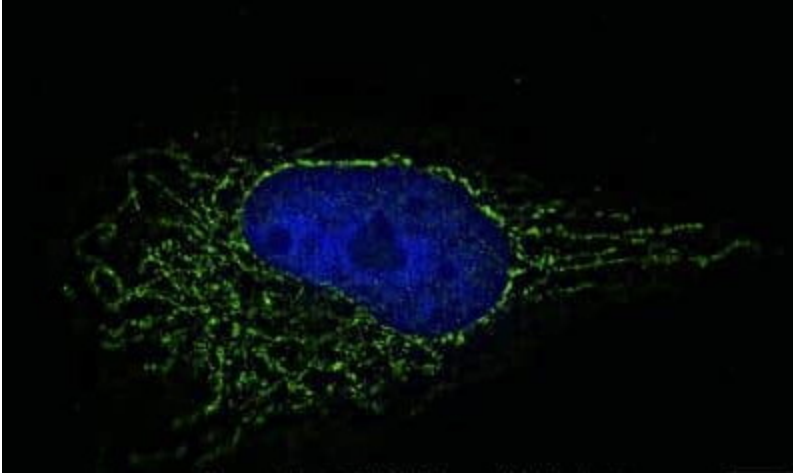
### PCB (PC) Rabbit Polyclonal Antibody

#### Product data:

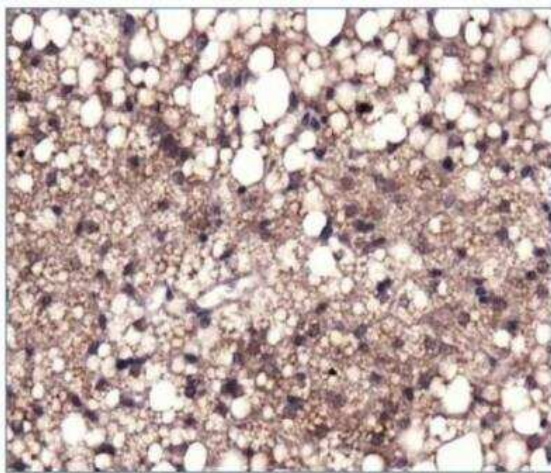
Product Type:	Primary Antibodies
Applications:	ICC/IF, IHC, WB
Recommended Dilution:	Knockdown Validated, Immunohistochemistry: 1:200, Immunocytochemistry/ Immunofluorescence: 1:50-1:100, Immunohistochemistry-Paraffin: 1:200, Western Blot: 1:1000
Reactivity:	Bovine, Human, Mouse, Porcine, Rat
Host:	Rabbit
Clonality:	Polyclonal
Immunogen:	A genomic peptide made to an internal region of the human Pyruvate Carboxylase protein (within residues 930-1050). [Swiss-Prot P11498]
Formulation:	PBS, 0.1% BSA, 50% glycerol and 0.05% Sodium Azide
Concentration:	lot specific
Purification:	Affinity purified
Conjugation:	Unconjugated
Storage:	Store at -20°C as received.
Stability:	Stable for 12 months from date of receipt.
Gene Name:	pyruvate carboxylase
Database Link:	<a href="#">NP_000911</a> <a href="#">Entrez Gene 25104 Rat</a> <a href="#">Entrez Gene 18517 Mouse</a> <a href="#">Entrez Gene 5091 Human</a> <a href="#">P11498</a>
Synonyms:	PCB
Protein Families:	Druggable Genome
Protein Pathways:	Citrate cycle (TCA cycle), Metabolic pathways, Pyruvate metabolism



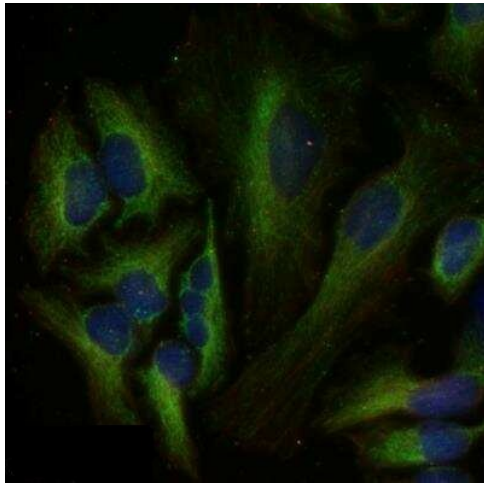
[View online »](#)

**Product images:**

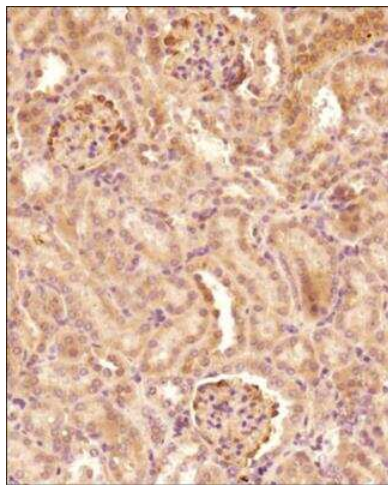
Immunocytochemistry/Immunofluorescence: Pyruvate Carboxylase Antibody TA309794 - HeLa cells were fixed in 4% paraformaldehyde for 10 min and permeabilized in 0.05% Triton X-100 in PBS for 5 minutes. The cells were incubated with anti- (TA309794) at 10 ug/ml overnight at 4C and detected with an anti-rabbit Dylight 488 (Green) at a 1:500 dilution for 60 minutes. Nuclei were counterstained with DAPI (Blue). Cells were imaged using a 100X objective and digitally deconvolved.



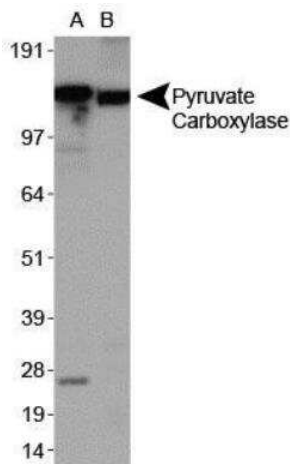
Immunohistochemistry-Paraffin: Pyruvate Carboxylase Antibody TA309794 - IHC analysis of a formalin fixed and paraffin embedded tissue section of mouse adipose tissue using rabbit anti-Pyruvate Carboxylase antibody at 1:200 dilution. The signal was developed using HRP conjugated anti-rabbit secondary antibody and DAB reagent. The nuclei were counterstained using hematoxylin. This Pyruvate Carboxylase antibody generated a specific staining of the fat cells in the tested section.



Immunocytochemistry/Immunofluorescence: Pyruvate Carboxylase Antibody TA309794 - HeLa cells were fixed and permeabilized for 10 minutes using -20C MeOH. The cells were incubated with anti-Pyruvate Carboxylase at 2 ug/ml overnight at 4C and detected with an anti-rabbit Dylight 488 (Green) at a 1:500 dilution. Alpha tubulin (DM1A) NB100-690 was used as a co-stain at a 1:1000 dilution and detected with an anti-mouse Dylight 550 (Red) at a 1:500 dilution. Nuclei were counterstained with DAPI (Blue). Cells were imaged using a 40X objective.



Immunohistochemistry-Paraffin: Pyruvate Carboxylase Antibody TA309794 - IHC analysis of a formalin fixed and paraffin embedded tissue section of mouse kidney using rabbit anti-Pyruvate Carboxylase antibody at 1:200 dilution. The signal was developed using HRP conjugated anti-rabbit secondary antibody and DAB reagent. The nuclei were counterstained using hematoxylin. This Pyruvate Carboxylase antibody generated a diffused cytoplasmic staining in all the tubules and a subset of cells in glomerular cells.



Western Blot: Pyruvate Carboxylase Antibody TA309794 - Analysis of Pyruvate Carboxylase in A. Human liver extracts and B. Mouse liver extracts