

Product datasheet for **TA309787**

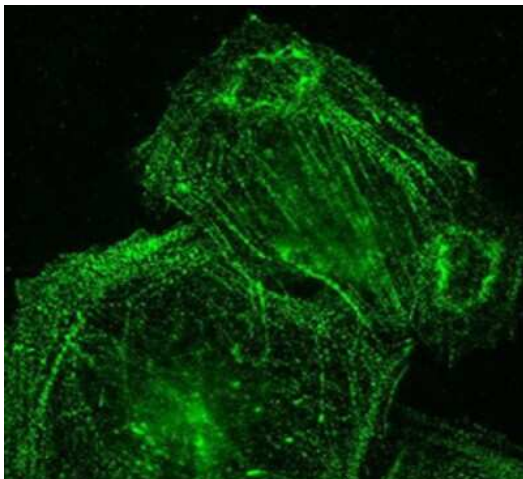
Palladin (PALLD) Mouse Monoclonal Antibody

Product data:

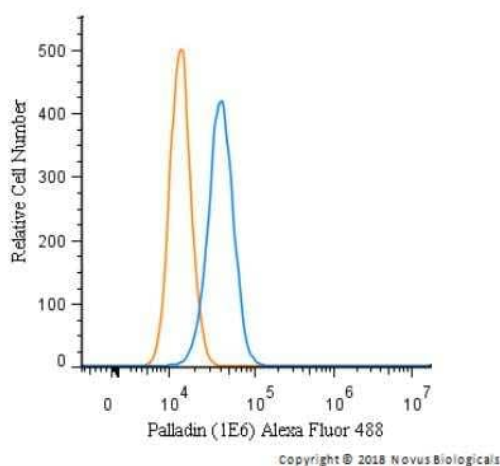
Product Type:	Primary Antibodies
Applications:	FC, ICC/IF, IHC, IP, WB
Recommended Dilution:	Immunohistochemistry: 1:50-1:200, Immunocytochemistry/ Immunofluorescence: 1:20-1:100, Immunoprecipitation: 0.05 ml / 2 ml lysate, Western Blot: 1 ug/ml, Immunohistochemistry-Paraffin: 1:50-1:100, Flow Cytometry: 5 ug/ml, Knockdown Validated
Reactivity:	Chicken, Human, Mouse, Rat
Host:	Mouse
Isotype:	IgG1
Clonality:	Monoclonal
Immunogen:	Endogenous Palladin immunoprecipitated from chicken embryo fibroblasts.
Formulation:	Tris-glycine, 150mM NaCl pH 7.5 and 0.05% Sodium Azide
Concentration:	lot specific
Purification:	Protein G purified
Conjugation:	Unconjugated
Storage:	Store at -20°C as received.
Stability:	Stable for 12 months from date of receipt.
Gene Name:	palladin, cytoskeletal associated protein
Database Link:	NP_057165 Entrez Gene 72333 Mouse Entrez Gene 364558 Rat Entrez Gene 23022 Human Q8WX93
Synonyms:	CGI-151; CGI151; MYN; PNCA1; SIH002



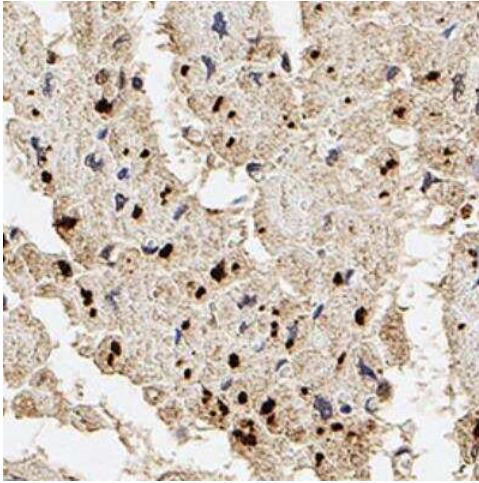
[View online »](#)

Product images:

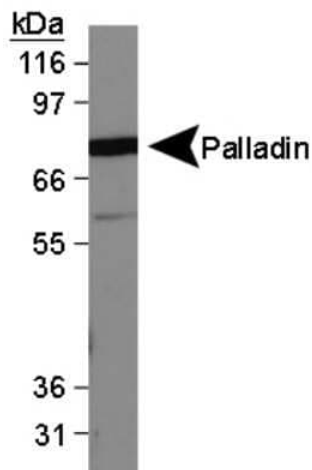
Immunocytochemistry/Immunofluorescence:
Palladin Antibody (1E6) TA309787 -
Immunofluorescence on a7r5 cells.



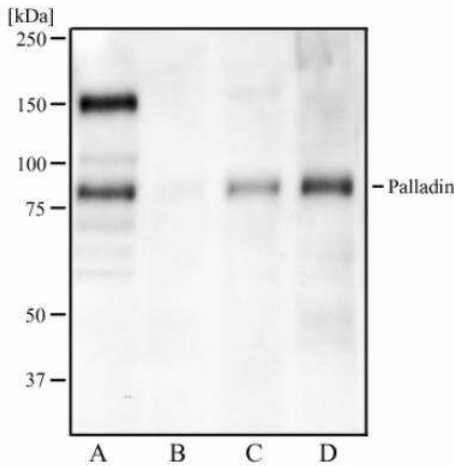
Flow Cytometry: Palladin Antibody (1E6)
TA309787 - An intracellular stain was performed
on HeLa cells with Palladin Antibody [1E6]
TA309787AF488 (blue) and a matched isotype
control (orange). Cells were fixed with 4% PFA and
then permeabilized with 0.1% saponin. Cells were
incubated in an antibody dilution of 5 ug/mL for
30 minutes at room temperature. Both
antibodies were conjugated to Alexa Fluor 488.



Immunohistochemistry-Paraffin: Palladin Antibody (1E6) TA309787 - Palladin was detected in immersion fixed paraffin-embedded sections of human heart using Mouse Anti-Human Palladin (1E6) Monoclonal Antibody (Catalog # TA309787) at 1:100 for 1 hour at room temperature followed by incubation with the Anti-Mouse IgG VisUCyte™ HRP Polymer Antibody (Catalog # VC001). Tissue was stained using DAB (brown) and counterstained with hematoxylin (blue). Specific staining was localized to the cytoplasm in cardiomyocytes.



Western Blot: Palladin Antibody (1E6) TA309787 - MDA-MB-231 lysate.



Western Blot: Palladin Antibody (1E6) TA309787 - Western blot analysis of HeLa (A), A431 (B), NIH3T3 (C), and PC-12 (D) cell line extracts using Palladin antibody at 1ug/ml.