

## Product datasheet for **TA309778**

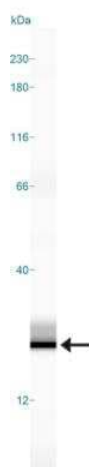
### **MTH1 (NUDT1) Rabbit Polyclonal Antibody**

#### **Product data:**

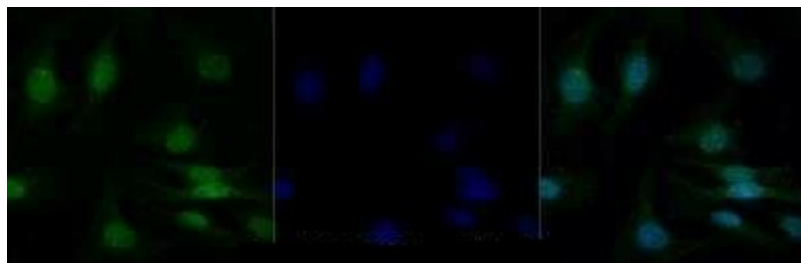
<b>Product Type:</b>	Primary Antibodies
<b>Applications:</b>	ICC/IF, IHC, Immunoblotting, Simple Western, WB
<b>Recommended Dilution:</b>	Immunoblotting, Immunohistochemistry-Paraffin: 1:200, Immunohistochemistry: 1:200, Immunocytochemistry/ Immunofluorescence: 1:50-1:200, Western Blot: 1:500, Immunohistochemistry-Frozen: 1:200, Simple Western: 1:50, Knockdown Validated, Single Cell Western: 100 ug/ml, Knockout Validated
<b>Reactivity:</b>	Human, Mouse, Rat
<b>Host:</b>	Rabbit
<b>Clonality:</b>	Polyclonal
<b>Immunogen:</b>	A c-terminal peptide derived from the human MTH1 conjugated to KLH.
<b>Formulation:</b>	PBS and 0.05% Sodium Azide
<b>Purification:</b>	Affinity purified
<b>Conjugation:</b>	Unconjugated
<b>Storage:</b>	Store at -20°C as received.
<b>Stability:</b>	Stable for 12 months from date of receipt.
<b>Gene Name:</b>	nudix hydrolase 1
<b>Database Link:</b>	<a href="#">NP_002443</a> <a href="#">Entrez Gene 17766 Mouse</a> <a href="#">Entrez Gene 117260 Rat</a> <a href="#">Entrez Gene 4521 Human</a> <a href="#">P36639</a>
<b>Synonyms:</b>	MTH1
<b>Protein Families:</b>	Stem cell - Pluripotency



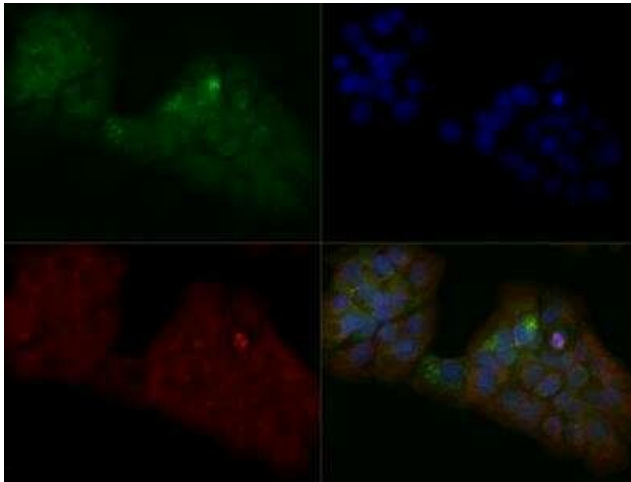
[View online »](#)

**Product images:**

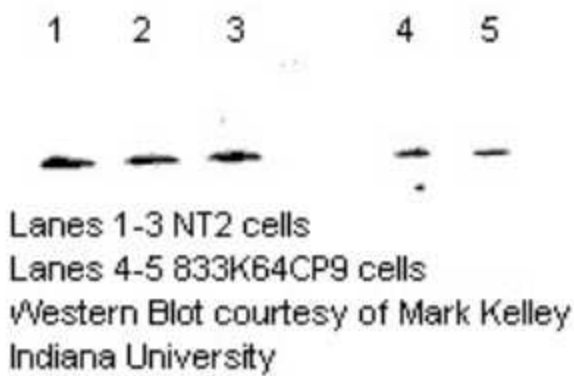
Simple Western: MTH1 Antibody TA309778 - Simple Western lane view shows a specific band for MTH1 in 0.5 mg/ml of A431 lysate. This experiment was performed under reducing conditions using the 12-230 kDa separation system.



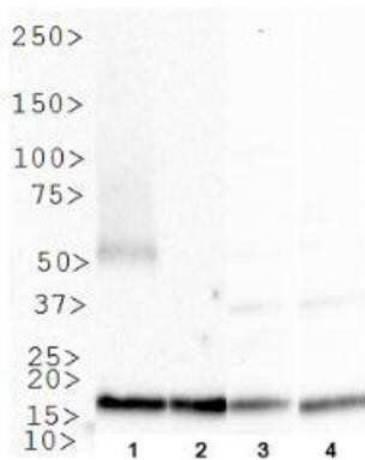
Immunocytochemistry/Immunofluorescence: MTH1 Antibody TA309778 - HeLa cells were fixed for 10 minutes using 10% formalin and then permeabilized for 5 minutes using 1X PBS + 0.05% Triton-X100. The cells were incubated with anti-MTH1 at 2 ug/ml overnight at 4C and detected with an anti-rabbit Dylight 488 (Green) at a 1:500 dilution. Nuclei were counterstained with DAPI (Blue). Cells were imaged using a 40X objective.



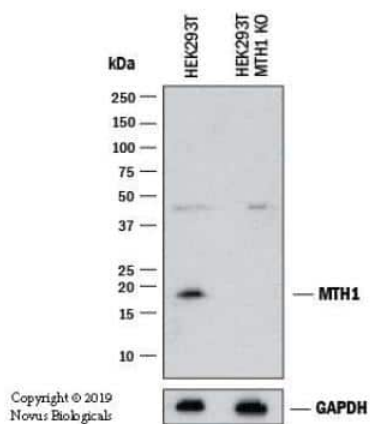
Immunocytochemistry/Immunofluorescence: MTH1 Antibody TA309778 - A431 cells were fixed for 10 minutes using 10% formalin and then permeabilized for 5 minutes using 1X TBS + 0.5% Triton-X100. The cells were incubated with anti-MTH1 (TA309778) at a 1:200 dilution overnight at 4C and detected with an anti-rabbit Dylight 488 (Green) at a 1:500 dilution. Alpha tubulin was used as a co-stain at a 1:1000 dilution and detected with an anti-mouse Dylight 550 (Red) at a 1:500 dilution. Nuclei were counterstained with DAPI (Blue). Cells were imaged using a 40X objective.



Western Blot: MTH1 Antibody TA309778 - MTH1 antibody was tested in the labeled lanes.



Western Blot: MTH1 Antibody TA309778 - Analysis of MTH1 in 1. Ntera2, 2. MCF7 cell lysate, 3. A431 cell lysate and 4. COS7 cell lysate.



Knockout Validated: MTH1 Antibody TA309778 - Western blot shows lysates of HEK293T human embryonic kidney parental cell line and MTH1 knockout (KO) HEK293T cell line. PVDF membrane was probed with 1:500 of Rabbit Anti-Human MTH1 Polyclonal Antibody (Catalog # TA309778) followed by HRP-conjugated Anti-Rabbit IgG Secondary Antibody (Catalog #HAF008). Specific band was detected for MTH1 at approximately 18 kDa (as indicated) in the parental HEK293T cell line, but is not detectable in the knockout HEK293T cell line. This experiment was conducted under reducing conditions.