

## Product datasheet for **TA309777**

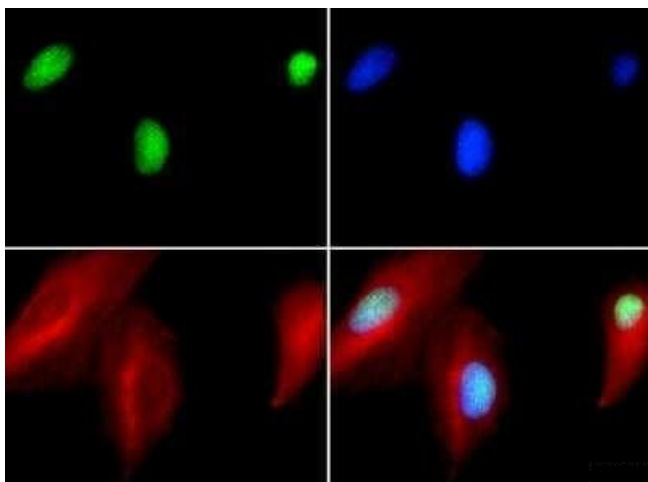
### **NTH1 (NTHL1) Rabbit Polyclonal Antibody**

#### **Product data:**

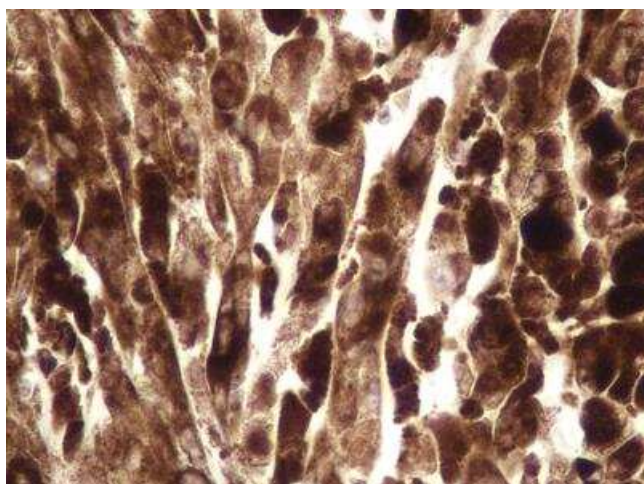
<b>Product Type:</b>	Primary Antibodies
<b>Applications:</b>	ICC/IF, IHC, WB
<b>Recommended Dilution:</b>	Western Blot: 1:500, Immunohistochemistry, Immunocytochemistry/ Immunofluorescence: 1:800, Immunohistochemistry-Paraffin: 1:200
<b>Reactivity:</b>	Bovine, Human, Rat
<b>Host:</b>	Rabbit
<b>Clonality:</b>	Polyclonal
<b>Immunogen:</b>	A peptide derived from the human NTH1 conjugated to KLH.
<b>Formulation:</b>	PBS and 0.05% Sodium Azide
<b>Concentration:</b>	lot specific
<b>Purification:</b>	Affinity purified
<b>Conjugation:</b>	Unconjugated
<b>Storage:</b>	Store at -20°C as received.
<b>Stability:</b>	Stable for 12 months from date of receipt.
<b>Gene Name:</b>	nth-like DNA glycosylase 1
<b>Database Link:</b>	<a href="#">NP_002519</a> <a href="#">Entrez Gene 29541 Rat</a> <a href="#">Entrez Gene 4913 Human</a> <a href="#">P78549</a>
<b>Synonyms:</b>	hNTH1; NTH1; OCTS3
<b>Protein Families:</b>	Druggable Genome, Stem cell - Pluripotency
<b>Protein Pathways:</b>	Base excision repair



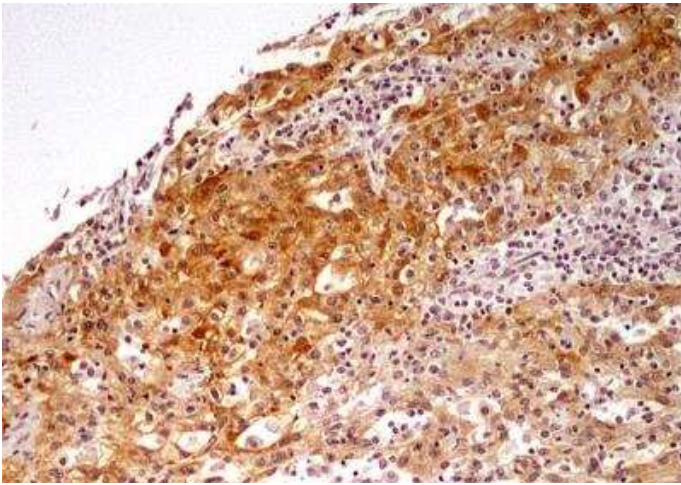
[View online »](#)

**Product images:**

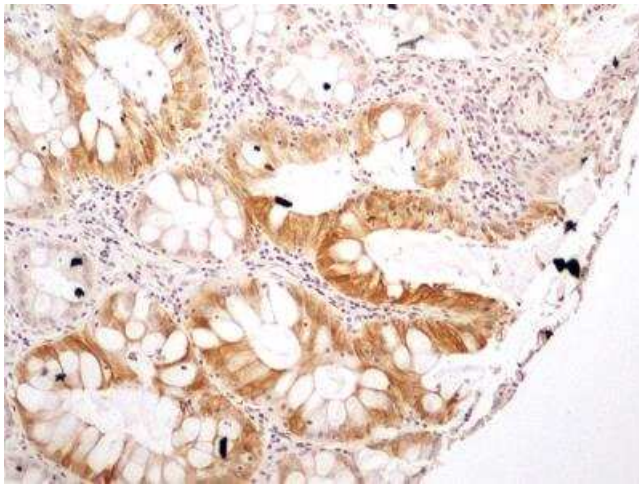
Immunocytochemistry/Immunofluorescence: NTH1 Antibody TA309777 - NTH1 antibody was tested in HeLa cells with FITC (green). Nuclei and alpha-tubulin were counterstained with Dapi (blue) and Dylight 550 (red).



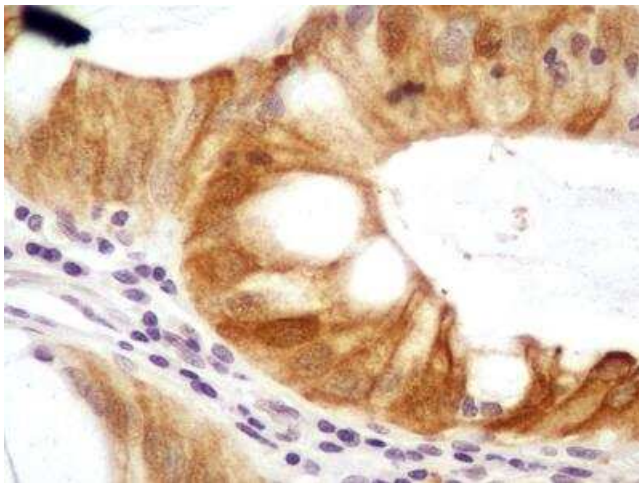
Immunohistochemistry-Paraffin: NTH1 Antibody TA309777 - IHC analysis of formalin-fixed paraffin-embedded tissue section of human lymph node cancer using 5 ug/ml concentration of NTH1 antibody. The representative image shows strong nuclear and cytoplasmic positivity of NTH1 protein in the lymph node cancer cells.



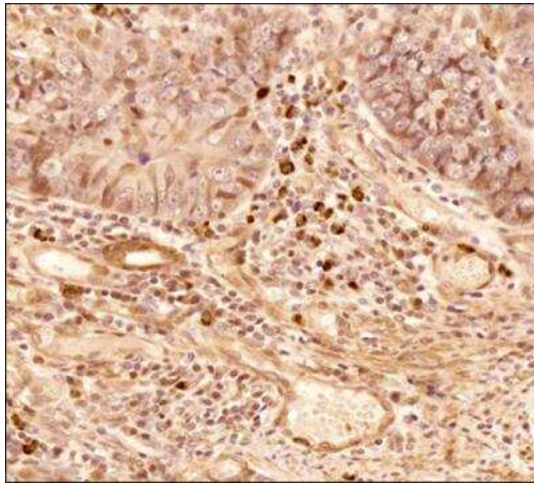
Immunohistochemistry-Paraffin: NTH1 Antibody TA309777 - IHC analysis of formalin-fixed paraffin-embedded tissue section of human kidney cancer using 5 ug/ml concentration of NTH1 antibody. The renal cancer cells showed nuclear and cytoplasmic positivity for NTH1 protein, whereas, the tumor stroma was largely negative for immunostaining.



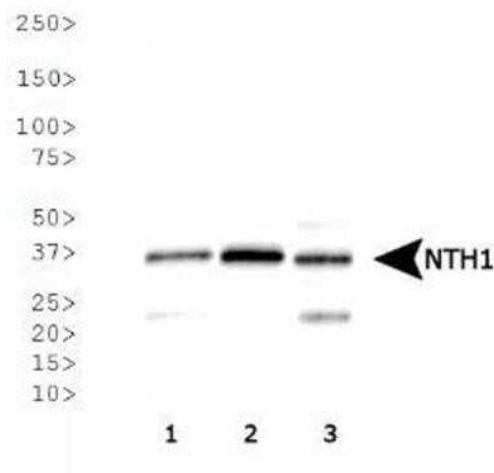
Immunohistochemistry-Paraffin: NTH1 Antibody TA309777 - IHC analysis of formalin-fixed paraffin-embedded tissue section of human rectal cancer using 5 ug/ml concentration of NTH1 antibody. The rectal cancer cells as well as the goblet cells in glandular areas showed nuclear-cytoplasmic positivity for NTH1 protein. The cells of tumor stroma did not develop immunostaining for this protein.



Immunohistochemistry-Paraffin: NTH1 Antibody TA309777 - IHC analysis of formalin-fixed paraffin-embedded tissue section of human rectal cancer using 5 ug/ml concentration of NTH1 antibody. This representative image at high resolution depicts nuclear-cytoplasmic positivity for NTH1 protein in rectal cancer cells and the goblet cells. The cells of tumor stroma did not develop any immunostaining for this protein.



Immunohistochemistry-Paraffin: NTH1 Antibody TA309777 - IHC analysis of a formalin fixed paraffin embedded (FFPE) tissue section of human colon adenocarcinoma using NTH1 antibody at 5ug/ml concentration (1:200 dilution). The primary antibody binding to NTH1/ NTHL1 antigen was detected using HRP conjugated anti-rabbit secondary antibody with DAB reagent, and the sections were further counterstained with hematoxylin for labeling cellular nuclei. The NTH1 antibody generated an expected nuclear cytoplasmic staining of NTH1 protein in colon cancer cells as well as the cells of tumor stroma including cancer associated fibroblasts. The nuclear staining of NTH1 was very strong in a sub-set of colon cancer cells.



Western Blot: NTH1 Antibody TA309777 - Analysis of NTH1 expression in 1) HeLa, 2) A-431, 3) MCF7 whole cell lysates.